

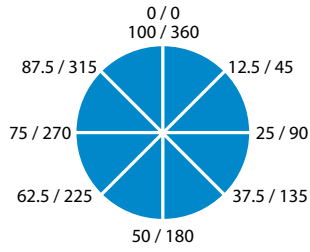
# Operative

| Konservierende Behandlung | Operatoria | Operatoire |

<b>Cavity Prep Instruments</b>	Page 23-24
Schmelzinstrumente   Instrumentos para la Preparación de Cavidades     Instruments pour Preparation de Cavité	
<b>Excavators</b>	25-28
Exkavatoren   Excavadores   Excavateurs	
<b>Amalgam Carriers/Guns</b>	29
Amalgam Träger/Pistolen   Porta Amalgamas     Portes-Amalgame/Seringues à Amalgame	
<b>Applicators</b>	30
Anwender   Aplicadores   Applicateurs	
<b>Cord Packers</b>	30
Fadenstopfer   Empacadores de Hilo   Fouloirs à Fil à Écarter	
<b>Pluggers/Condensers</b>	31-33
Plombier/Kondensator   Obturadores/Condensadores     Fouloirs à Amalgame	
<b>Carvers</b>	34-36
Modellier Instrumente   Talladores   Sculpteurs	
<b>Amalgam Knives</b>	37
Amalgam-Messer   Recortador de Amalgama   Sculpteurs Amalgame	
<b>Burnishers</b>	37
Polier Instrumente   Bruñidores   Brunissoirs	
<b>Composite/Plastic Filling Instruments</b>	38-42
Composite Instrumente/Instrumente für Plastische Füllungen     Instrumentos para Obturación Plástica y Composite     Composite/Instruments pour Plombages Plastiques	
<b>Composite Instruments</b>	43-44
Composite Instrumente   Instrumentos para Composite     Instruments pour Plombages Plastiques et Composites	
<b>Crown Removers</b>	44
Kronenringabnehmer   Removedores de Coronas     Arrache Couronnes	
<b>Spatulas</b>	45
Spatel   Espátulas   Spatulas	
<b>Laboratory Instruments</b>	46-47
Labor Instrumente   Instrumentos de Laboratorio     Instruments pour Laboratoire	

# Cavity Preparation Instruments

| Schmelzinstrumente | Instrumentos para la Preparación de Cavidades |  
 Instruments pour Preparation de Cavité |



1st # - Centigrade Scale  
 2nd # - Standard Scale

### Black's Formula

A standard method used to describe the size, shape and angulation of cavity preparation instruments, created by Dr. Greene Vardiman Black ("the father of modern dentistry").

Hatchets, chisels and cavity prep instruments have 3 measurements: (x, y, z), based on a circular 100° (centigrade) scale, instead of the typical 360° (astronomical) scale.

x= the width of the blade in tenths of millimeters.

y= the length of the blade in whole millimeters.

z = the angle the blade forms with the long axis of the handle.

A fourth number, used on select angle formers and margin trimmers, is placed between the first two numbers ( x, a, y, z ).

a= the degree of angle for the cutting edge to the long axis of the handle.

### Angle Former - California



CC 32/33 • 1003301

(9-80-4-8)

### Carver - Black



BC 89/92 • 1003240

### Chisel



4 • 1003133



48 • 1003134



48S • 1003135

### Chisel - Black



BC 81/82 • 1003236

### Chisel - California



CC 11/12 • 1003292

(15-8-8)



CC 40/41 • 1003305

(18-10-16)

## Cavity Preparation Instruments

| Schmelzinstrumente | Instrumentos para la Preparación de Cavidades | Instruments pour Preparation de Cavité |

### Hatchet - Black



### Hatchet - California



### Margin Trimmer - Black



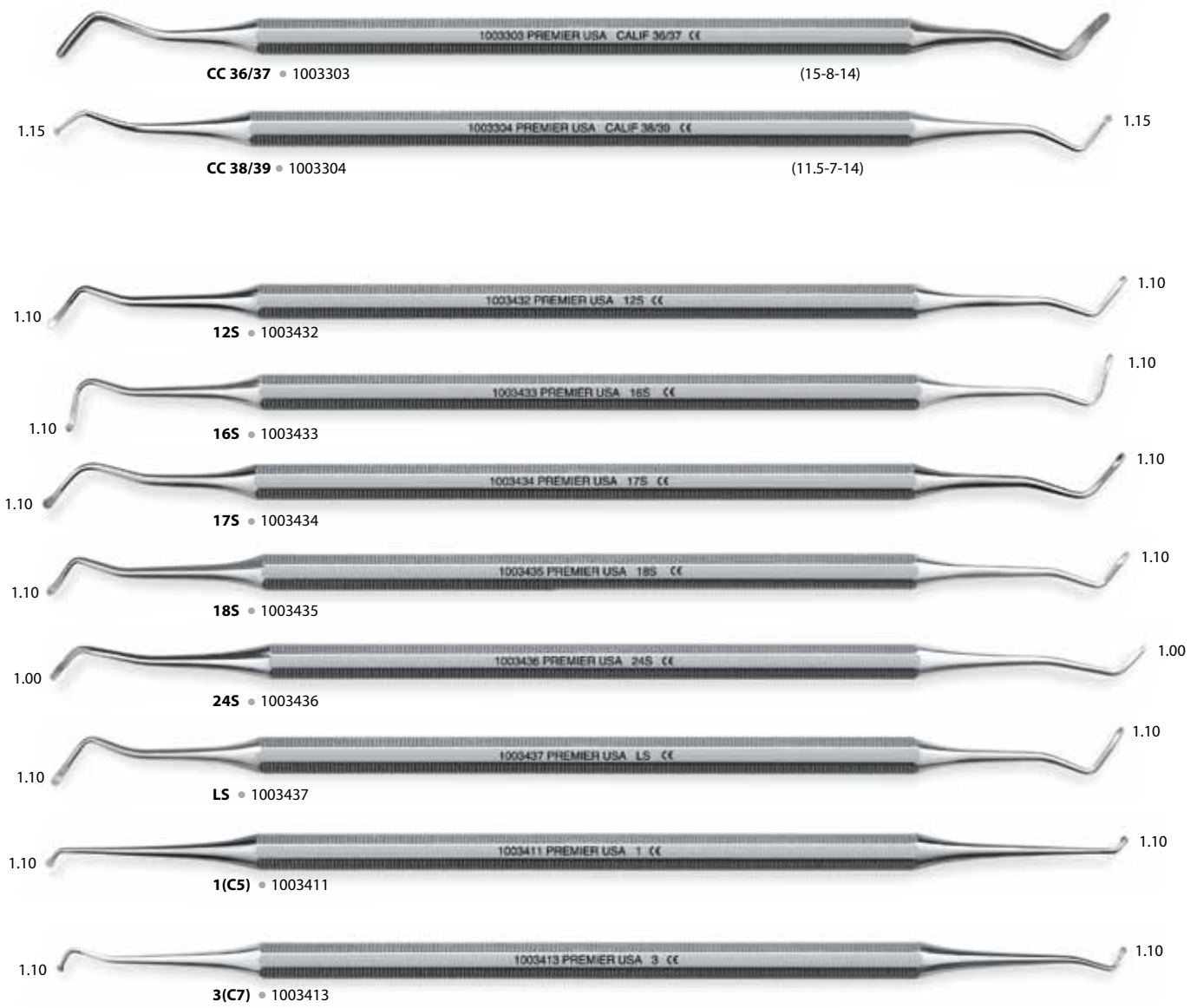
### Margin Trimmer - California



**Black**

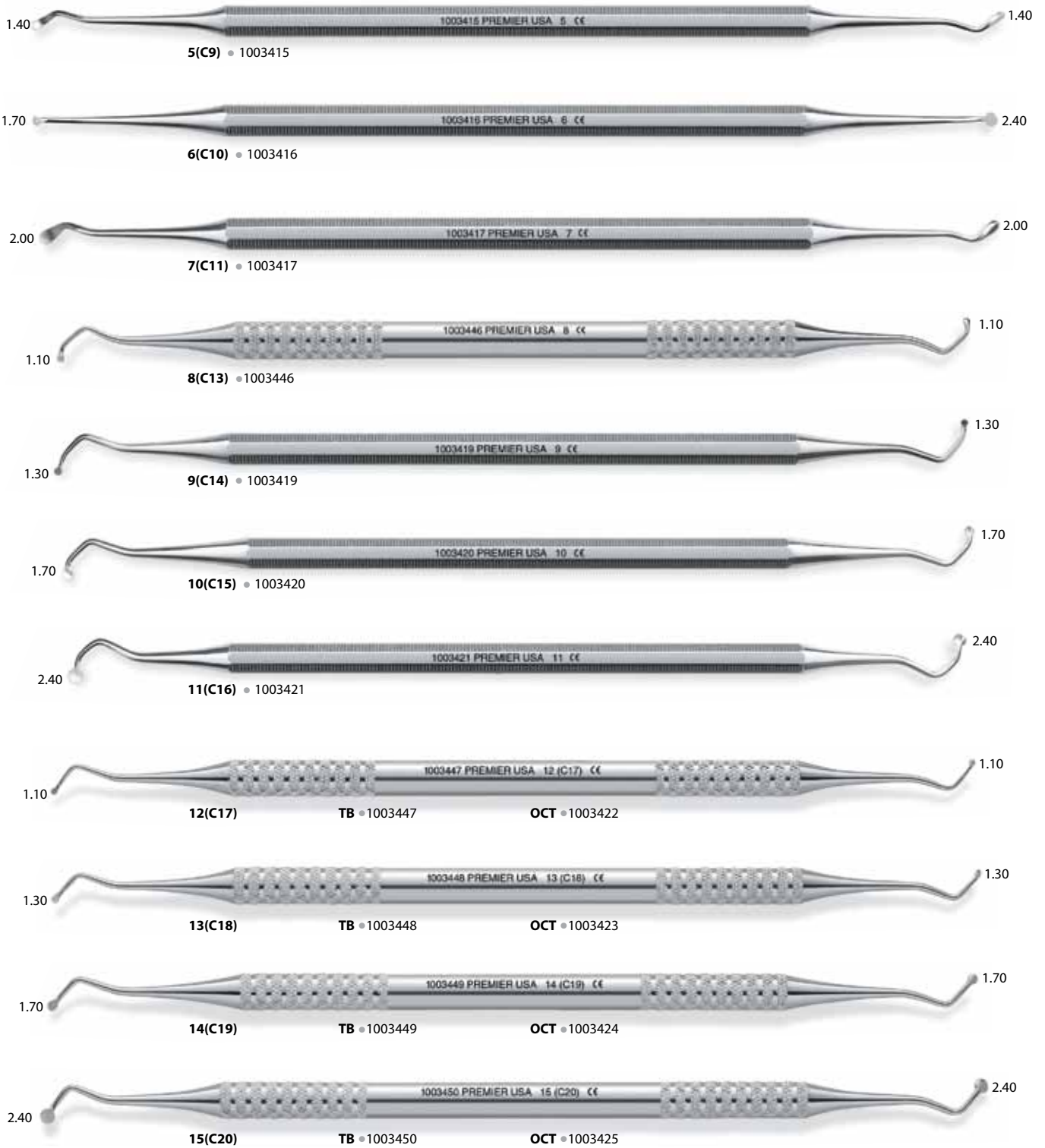


**California**



Tip diameter measurements in millimeters.

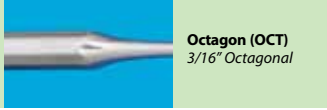
Excavators | Exkavatoren | Excavadores | Excavateurs |







**Tactile  
Balanced (TB)**  
1/4" Round

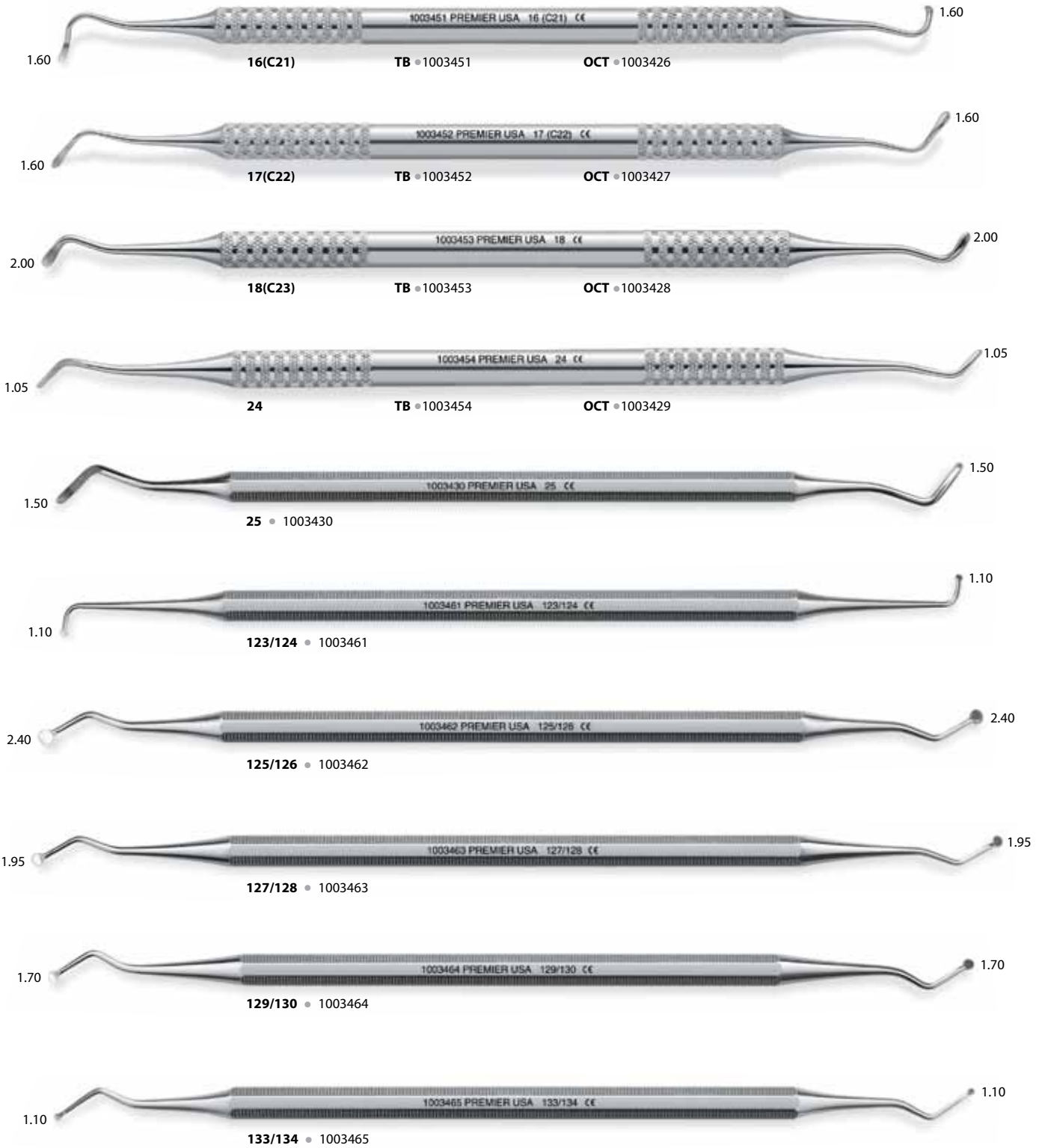


**Octagon (OCT)**  
3/16" Octagonal



feel the difference **premier**

| Exkavatoren | Excavadores | Excavateurs | **Excavators**



Tip diameter measurements in millimeters.

Excavators | Exkavatoren | Excavadores | Excavateurs |



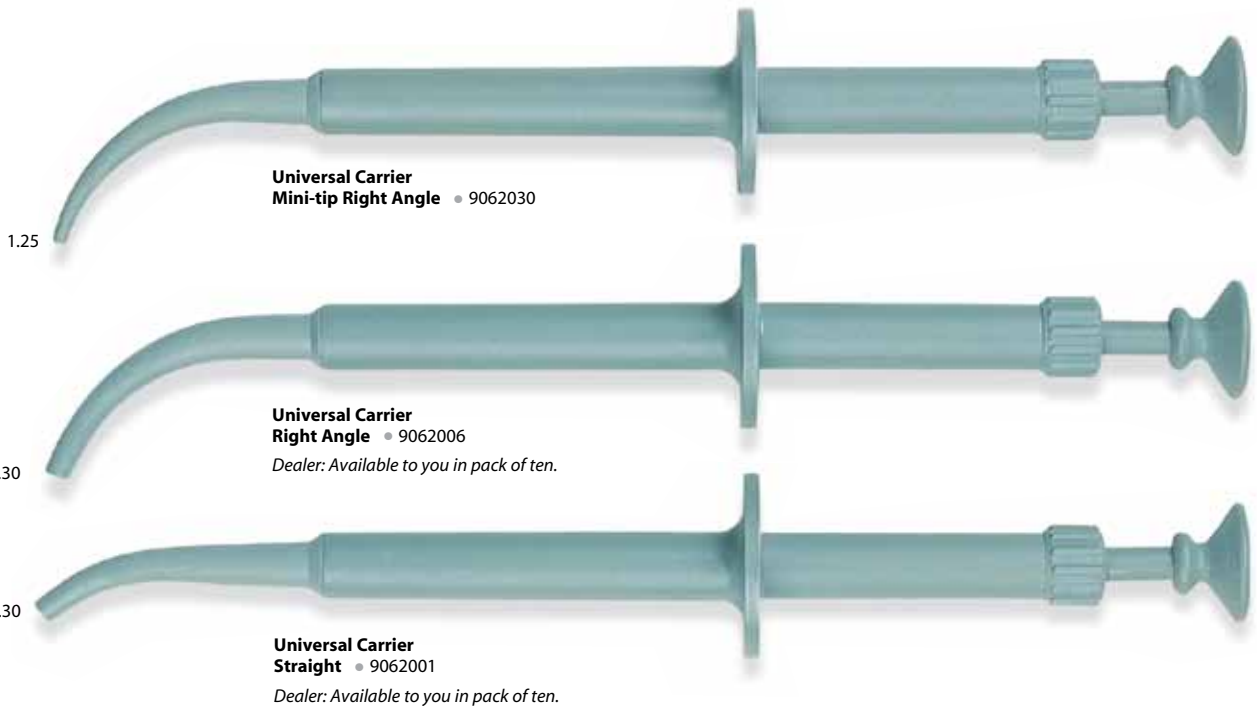
Endodontic Excavators (31LS, 31L, 32L, 33L) available on page 49.

## Amalgam Carriers/Guns

| Amalgan Träger/Pistolen | Porta Amalgamas | Portes-Amalgame/Seringues à Amalgame |



**Amalgam Carrier DE Regular** (2.00mm) / **Large** (2.75mm) • 9062201  
**Also available DE Large** (2.75mm) / **Jumbo** (3.00mm) • 9062202



**Universal Carrier Mini-tip Right Angle** • 9062030

**Universal Carrier Right Angle** • 9062006  
*Dealer: Available to you in pack of ten.*

**Universal Carrier Straight** • 9062001  
*Dealer: Available to you in pack of ten.*

Universal Carriers are unique placement instruments with a sleek design. They enable the operator to transport and place amalgam while minimizing finger fatigue.

### REPLACEMENT PARTS FOR UNIVERSAL CARRIERS

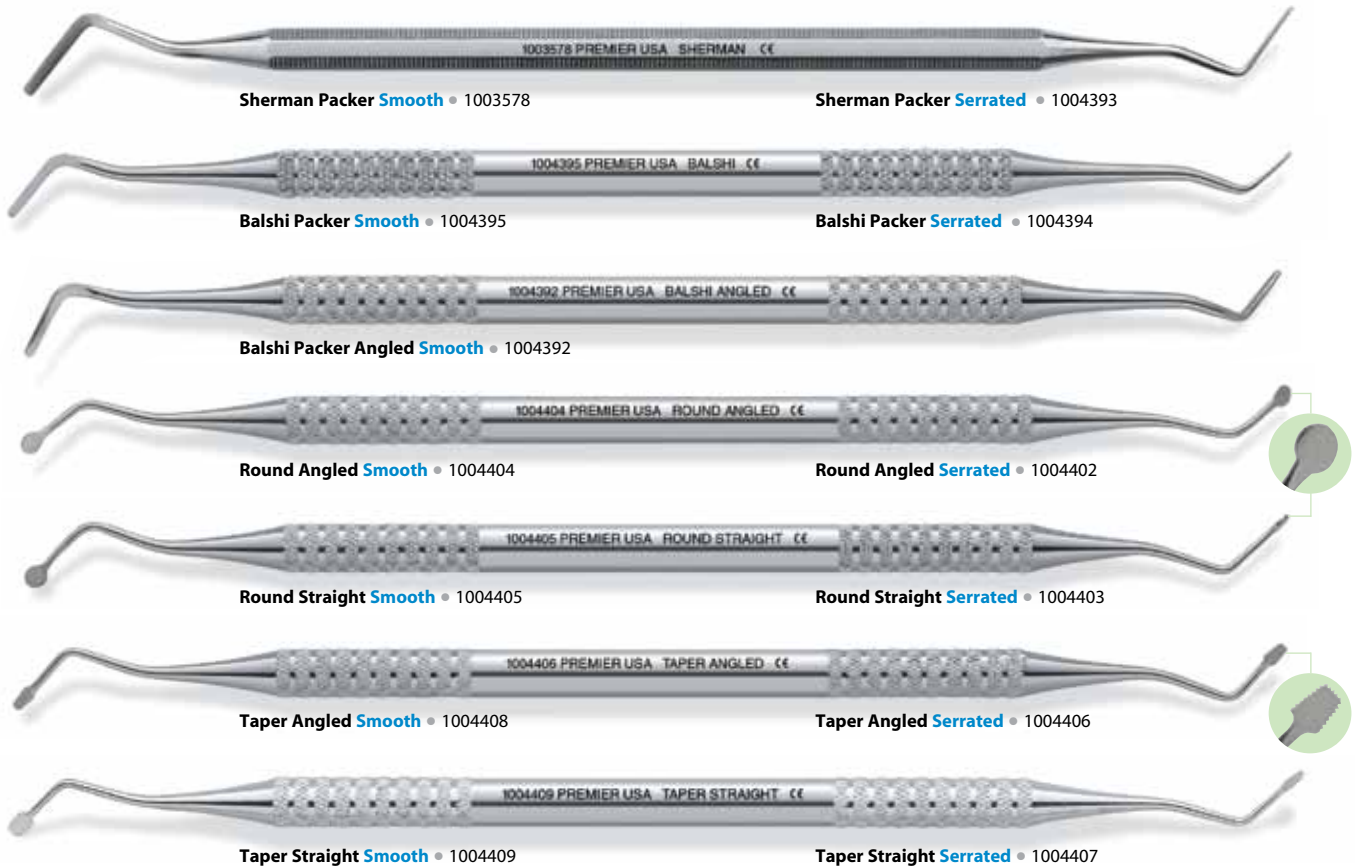
Item	Item No.
Universal Carrier Nose Tip Straight	9062011
Universal Carrier Nose Tip Right Angle	9062013
Universal Carrier Plunger Straight	9062015
Universal Carrier Plunger Right Angle	9062017
Universal Carrier Spring (Fits all carriers)	9062021
Mini-plunger Right Angle	9062034



## Applicators | Anwender | Aplicadores | Applicateurs |



## Cord Packers | Fadenstopfer | Empacadores de Hilo | Fouloirs à Fil à Écarter |



Tip diameter measurements in millimeters.

## Pluggers/Condensers

| Plombier/Kondensator | Obturadores/Condensadores | Fouloirs à Amalgame |

### Black



### Bredall - Smooth



#### Bredall Pluggers/Condensers have a unique rest.

Condensation pressure is directed to gingival and occlusal areas - not angulated towards the matrix bands. This is especially important when the operator is seated, because the dentist does not have to contort with the instruments to get packing thrust.

Additionally, the patient does not have to open as wide. The angulation does not have to be exaggerated to pack correctly. The finger rest aids in giving better amalgam packing forces.

### Bredall - Serrated

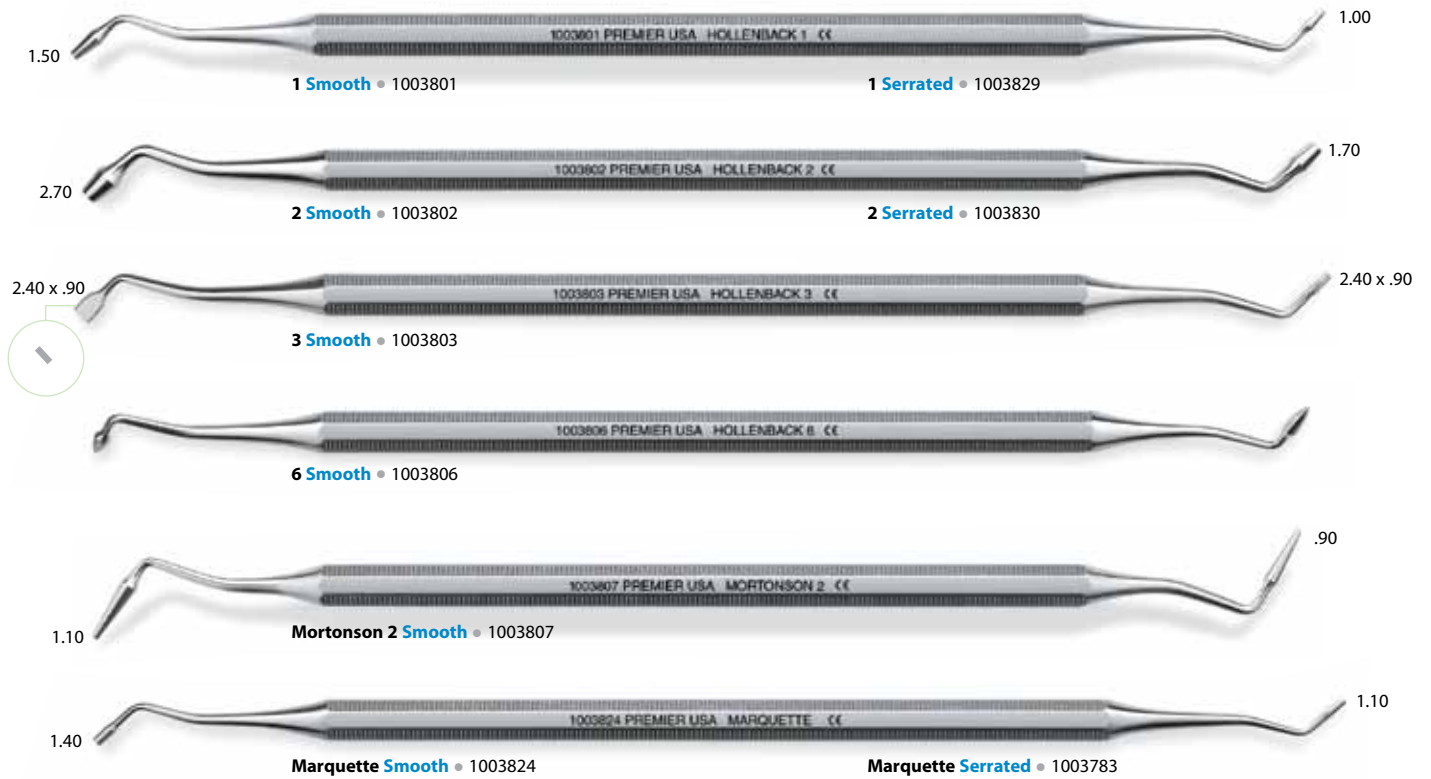


Tip diameter measurements in millimeters.

# Pluggers/Condensers

| Plombier/Kondensator | Obturadores/Condensadores | Fouloirs à Amalgame |

## Hollenback



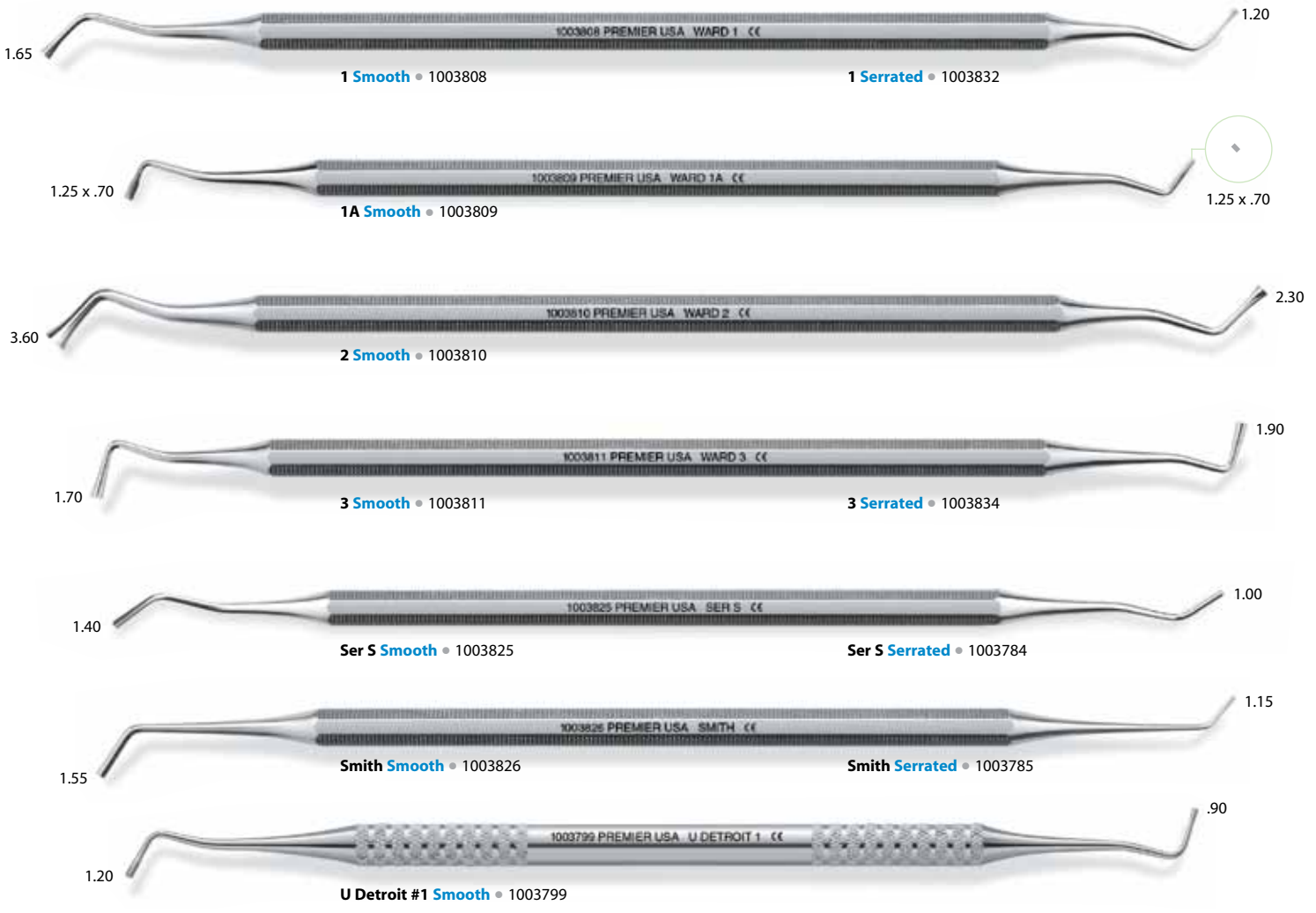
## Ladmore



## Pluggers/Condensers

| Plombier/Kondensator | Obturadores/Condensadores | Fouloirs à Amalgame |

### Ward



Carvers | Modeller Instrumente | Talladores | Sculpteurs |

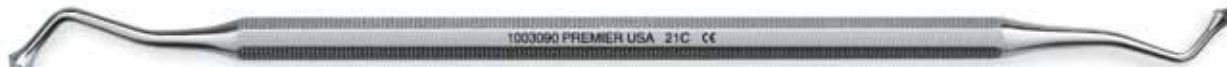
Acorn



21 • 1003050



21B • 1003051



21C • 1003090



21D • 1003091



CMI 21B • 1003097

For more CMI Instruments, see pages 31 and 43.

Cleoid/Discoid



Large • 1003045



3/6 • 1003046



5C • 1003047



6C • 1003048



7C • 1003049



Black 89/92 • 1003240

Cleoid/Discoid - Tanner



3T • 1003062



5T • 1003064



**Hollenback**



**Ward**



*technique tip*



**IPC Carver**  
Thin, flexible blades allow for easy placement and shaping. Dip in bonding agent to avoid composite sticking.

**Interproximal**





Carvers | Modellier Instrumente | Talladores | Sculpteurs |



**Bredall 4** • 1003053



**Walls 1** • 1003066



**Walls 3** • 1003067



**Andrews 1** • 1003052



**Shooshan A** • 1003061



**Frahm 2/3** • 1003081



**Caulk 5/7** • 1003054



**Levy 7 TB** • 1003079



| Amalgam-Messer | Recortador de Amalgama | Sculpteurs Amalgame | **Amalgam Knives**



**6T** • 1003590

| Polier Instrumente | Bruñidores | Brunissoirs | **Burnishers**



**33** • 1003017



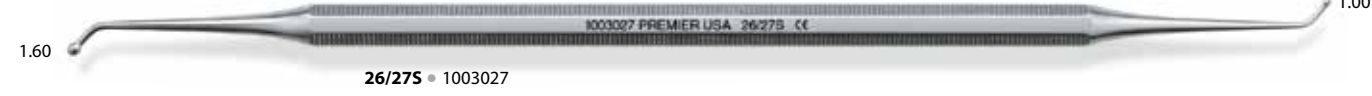
**2/3** • 1003025



**25/26 (PFI 13A)** • 1003694



**27/27S (PFI S Ball)** • 1003696



**26/27S** • 1003027



**27/29** • 1003028



**28/29** • 1003029



**2/34** • 1003030



**29/34** • 1003031

Tip diameter measurements in millimeters.

Composite/Plastic Filling Instruments | Composite Instrumente/Instrumente für Plastische Füllungen |  
| Instrumentos para Obturación Plástica y Composite | Composite/Instruments pour Plombages Plastiques |



11 • 1003692



13 • 1003693



13A (Burnisher 25/26) • 1003694



S Ball (Burnisher 27/27S) • 1003696



IPP A • 1003697



IPP B • 1003698



CJ • 1003700



156 • 1003737



179 • 1003738



180 • 1003739

| Composite Instrumente/Instrumente für Plastische Füllungen | **Composite/Plastic Filling Instruments**  
 | Instrumentos para Obturación Plástica y Composite | Composite/Instruments pour Plombages Plastiques |



D1 • 1003703



D2 • 1003704



D3 • 1003705



Gregg 2/3 • 1003706



Gregg 4/5 • 1003707

**Ladmore**



2 • 1003709



3 • 1003710



4 • 1003711



7 • 1003714



S1 • 1003715

Composite/Plastic Filling Instruments | Composite Instrumente/Instrumente für Plastische Füllungen |  
| Instrumentos para Obturación Plástica y Composite | Composite/Instruments pour Plombages Plastiques |



S3 • 1003717



S4 • 1003718



S5 • 1003719



S6 • 1003720



W1 • 1003721



W3 • 1003723

**Woodson**



1 • 1003724



2 • 1003725



3 • 1003726



TB Trico 1/2 • 1003736



6 • 1003691

| Composite Instrumente/Instrumente für Plastische Füllungen | **Composite/Plastic Filling Instruments**  
 | Instrumentos para Obturación Plástica y Composite | Composite/Instruments pour Plombages Plastiques |

### Slix™ Composite Manipulation Instruments

Nonstick - Durable – Ergonomic - Autoclavable

The tips are treated with a revolutionary protective coating that provides superior non-stick properties and a lustrous surface for long lasting esthetic appearance. No more composite sticking; dentists appreciate the easy placement and fast clean-up! The ergonomic handles are manufactured from an advance technology polymer with medical-grade silicone grips. "Surprisingly light"-only 16g - on the largest available handle (1/2" (1.27 cm) diameter) to reduce hand fatigue.



**11** • 05700



**13** • 05701



**IPC** • 05702



**Ladmore 3** • 05703



**Woodson 2** • 05704



**W3** • 05705



© **Composite/Plastic Filling Instruments** | Composite Instrumente/Instrumente für Plastische Füllungen |  
| Instrumentos para Obturación Plástica y Composite | Composite/Instruments pour Plombages Plastiques |



**Mini IPC** • 05708



**Mini 11** • 05706



**Mini W3** • 05709



**21B Acorn-Duckhead** • 05707



**Mini S1** • 05710

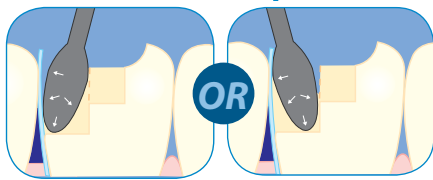
| Composite Instrumente | Instrumentos para Composite | **Composite Instruments** |  
| Instruments pour Plombages Plastiques et Composites |

**CCI and CMI** Anodized aluminum on CMI and CCI instruments provides even greater lubricity to virtually eliminate composite sticking. The black coating does not abrade to discolor the restoration.

**Composite Contact (CCI)**

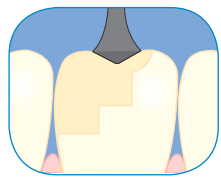


**CCI technique**



After placing composite into box, insert instrument tip into the composite, torque into position and apply gentle pressure to adjacent tooth for desired positive contact. Light-cure composite, making sure composite is not overfilled to lock in instrument. As recommended by Dr. Brian Wilk.

**CMI technique**



Acorn Carver (21B) is helpful in establishing anatomical contours, prior to carving.

**Composite Manipulation (CMI)\***



**Cleaning/Sterilizing Tips**

- Do not mix unlike metals in the same bag.
- Simply wipe off CMIs - do not expose to solutions with pH above 8 or containing iodophors.

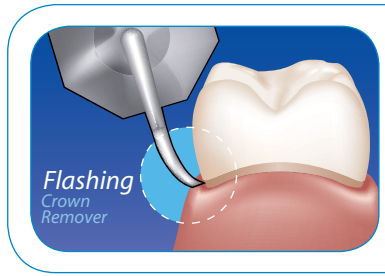
Tip diameter measurements in millimeters.  
\* CMI Instruments, Townie Choice Awards, 2003.

For CMI spatula, see page 45.

Composite Instruments | Composite Instrumente | Instrumentos para Composite |  
 Instruments pour Plombages Plastiques et Composites |



Crown Removers | Kronenringabnehmer | Removedores de Coronas | Arrache Couronnes |



**Flashing Crown Remover**  
 Ideal for removing provisionally cemented crowns without damaging margins and is less traumatic to the patient.



| Spatel | Espátulas | Spatulas | **Spatulas**



**Placement - Mini Spatula** • 1004381



**22** • 1004366



**24A** • 1004368



**24** • 1004367



**36** • 1004369



**CMI 24** • 1004365

*For additional CMI instruments, see pages 31, 34, and 43.*



**313** • 1004370

**Wax Spatulas**



**7** • 1004375



**7A** • 1004376



**7L** • 1004377



**31** • 1004379



**8** • 1004380

## Laboratory Instruments

| Labor Instrumente | Instrumentos de Laboratorio | Instruments pour Laboratoire |

### Wax Instruments - PK Thomas



Set of (5) PK Thomas DE Instruments • 1004388

## Laboratory Instruments

| Labor Instrumente | Instrumentos de Laboratorio | Instruments pour Laboratoire |

### Carvers



**Le Cron** • 1003083



**La Frienier** • 1003084



**Reeve** • 1003085



**Roach** • 1003086



**Vehe** • 1003087



**Zahle** • 1003088