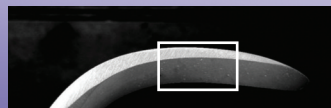


Light
Touch™

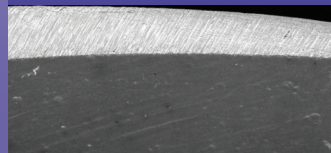
Big Easy®
Ultralite™

Big Easy®

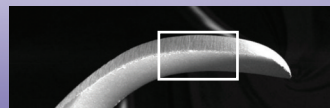
NEW! Premier®
SmartSharp™
Technology



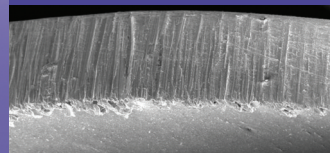
Premier® Instrument Edge



A sharp edge ensures a smooth,
precise cut with less hand fatigue.



Leading Competitor Edge



An irregular edge is less efficient
and can lead to more hand fatigue.

**Premier's innovation in sharpening technology
allows you to start sharp and work smart:**

- **Easily maintain sharpness** – proprietary process ensures a well defined edge you can easily re-sharpen as needed – to maintain efficiency
- **Apply less pressure and use fewer strokes** – achieve a glass-like tooth surface – more easily
- **SmartSharp™ now available on Premier Scalers and Curettes** – at no additional cost - on your choice of ergonomic handles - made in the U.S.A. with 95 years experience
- **Try Premier - your satisfaction is guaranteed!**

FREE Implant Care Kit and additional offers - see reverse for details!



Premier® SmartSharp™ Technology



FREE Implant Care Kit!*

Buy any two hygiene scalers or curettes, Get one Implant Care Kit FREE!

Kit includes one PerioWise UNC 12 Probe and one Universal Implant Scaler. Not to be combined with other offers. Limit one per office.

OR 6+1, 12+3 FREE on Premier hand instruments!

Excludes Cavity Finder 12-packs, PerioWise probes and Implant Scalers.



Big Easy® Ultralite
(BEUL)
1/2" diameter
16 grams



Big Easy® Hollow Handle Stainless Steel
(BE)
7/16" diameter
23 grams



Light Touch™ Round
(LT)
5/16" diameter
21 grams

Gracey			
	BEUL	BE	LT
1/2	05601	1005001	1004810
3/4	05603	1005005	1004811
5/6	05605	1005010	1004812
7/8	05607	1005015	1004813
9/10	05609	1005018	1004814
11/12	05611	1005020	1004815
13/14	05613	1005025	1004816
15/16	05653	1005026	1004819
17/18	05655	1005027	1004820

Columbia			
	BEUL	BE	LT
4L/4R	05615	1005030	1004801
13/14	05617	1005035	1004802

Jacquette			
	BEUL	BE	LT
34/35	05645	1005100	1004830

Barnhart			
	BEUL	BE	LT
1/2	n/a	1005105	1004827
5/6	05643	1005110	1004829

204 Series			
	BEUL	BE	LT
204S	05623	1005045	1004837
H-204S	05625	1005050	1004846
H-204SD	05627	1005055	1004847

McCalls			
	BEUL	BE	LT
13/14	05635	1005075	1004823
13S/14S	05639	1005085	1004821
17/18	05637	1005080	1004824
17S/18S	05641	1005090	1004822

Sickles			
	BEUL	BE	LT
H6/H7	05621	1005040	1004839
H5/33	05629	1005060	1004838
U15/30	05631	1005065	1004842
U15/33	05633	1005070	1004843

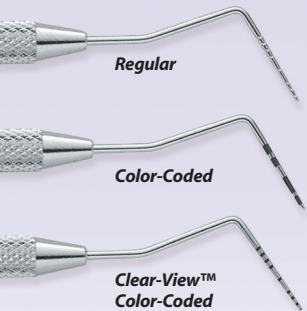
NEW!

Neb 128	05680	1005125	1004876
NV1	05690	1005850	1004850
NV2	05691	1005851	1004851
137	05692	1005852	1004852

Also available in NEW pocket scalers and mini pocket scalers! Ask your Rep for details!

Premier® Probes

Single-End	Regular	Color-Coded	Clear-View™
WHO (3.5-5.5-8.5-11.5mm)	—	1003675	—
YO 9 (3-6-9-12mm)	—	1003670	1004910
Williams (1-2-3-5-7-8-9-10mm)	1003672	1003668	1004916
Double-End	Regular	Color-Coded	Clear-View™
Probex (3-6-8-10mm)	1003680	1003681	1004924
Probex YO 9 (3-6-9-12mm)	—	1003689	1004920
Probex Williams (1-2-3-5-7-8-9-10mm)	1003682	1003688	1004926
Washington (1-2-3-5-7-8-9-10mm)	1003679	—	1004922
Nabers 2N	1003677	1003695	—



Ask your Rep to see Premier's full selection of instruments.

The Friendly Probe.®

Premier® PerioWise®

UNC 12

9006120 (3-pk)
9006121 (6-pk)
9006122 (12-pk)

- Excellent contrast
- Easy to read
- Safe around implants
- Autoclavable
- Patient comfort

3-6-9-12mm

9006108 (3-pk)
9006104 (6-pk)
9006106 (12-pk)

- Ideal for full examination or a quick screening
- Easy-to-read 3mm green band indicates periodontal health

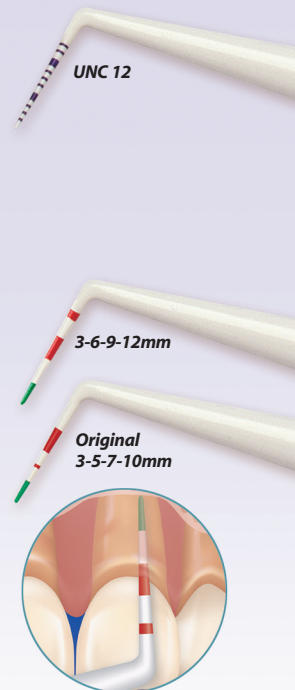
Original 3-5-7-10mm

9006107 (3-pk)
9006102 (6-pk)
9006105 (12-pk)

- Reaching a red mark indicates the possible presence of periodontal disease

- Safe around implants

- Autoclavable



Special Offer!* Buy 12 probes, Get a PerioWise 3-pack FREE!

UNC 12 sent unless otherwise requested.



Premier® Dental Products Company • 1710 Romano Drive, Plymouth Meeting, PA 19462, USA

Phone 888-670-6100 • 610-239-6000 • Fax 610-239-6171 • www.premusa.com • E-mail: dentalinfo@premusa.com

* To receive your free goods, forward a copy of your dealer invoice indicating appropriate purchase(s) to Premier Redemption Center, P.O. Box 640, Plymouth Meeting, PA 19462-0640. FAX number - 610-239-6171 or email: redemptions@premusa.com. Offers valid 7/1/09 through 9/30/09. Redeem by 10/15/09. Not to be combined with any other offers. Big Easy U.S. patent number D428,652. / 8610408 060936 Rev2 PPL20M