

Inspired Solutions from Premier®



Premier®

Hygiene Products

Every procedure you perform shapes how your patients feel about you. That's why we engineer solutions you can count on to deliver reliable results every day.

new! AeroPro™ Cordless Prophy System - See page 1

new! Vac Attak™ GREEN EPA-Compliant Evacuation System Cleaner - See page 27

new! AeroPro™

The New Standard in Cordless Prophylaxis Systems

Now there's finally a light-weight, ergonomic, cordless and pedal-less handpiece that gives you the mobility you want, the choice of prophylaxis angles you like, and the control you need.

Based on extensive input from dental professionals, AeroPro's innovative design helps reduce hand fatigue by allowing you to rotate the angle 360° for improved intraoral access and comfort. Its quick-touch button enables fingertip control for easy switching between low and high speeds. Its quiet yet powerful motor maintains a consistent speed during polishing – no extra pressure required. ChargeSMART™ Battery Technology gives you long-lasting power to get through the workday. And yes, AeroPro™ is CDC-compliant with a convenient infection prevention protocol. Best of all, your patients get a great polish. Every time.



Mobility

- ✓ Total mobility with no cord drag or rheostat
- ✓ ChargeSMART™ Battery Technology gets you through the day

Choice

- ✓ Works with Premier 2pro® and most disposable prophylaxis angles
- ✓ Quick-touch button to easily switch between speeds

Control

- ✓ Ergonomic, lightweight, well-balanced design
- ✓ Rotatable prophylaxis angle for 360° intraoral access and comfort
- ✓ Compliant to CDC infection prevention guidelines

5500510 AeroPro™ Complete Package
(3) Autoclavable Outer Sheaths,
(288) 2pro® Disposable Prophylaxis Angles (Short/Soft),
1 each: Motor Component, Charging Station,
AC Adapter, Stand, Box of 500 Disposable Barriers,
Accessories

*Best
value!*

5500500 AeroPro™ Basic Kit
(1) Autoclavable Outer Sheath,
(48) 2pro® Disposable Prophylaxis Angles (Short/Soft),
1 each: Motor Component, Charging Station,
AC Adapter, Stand, Box of 500 Disposable Barriers,
Accessories

5500520 AeroPro™ Autoclavable Outer Sheath

5500530 AeroPro™ Disposable Barriers - Box of 500



AeroPro Complete Package Shown



Breakthrough! BioCoat®

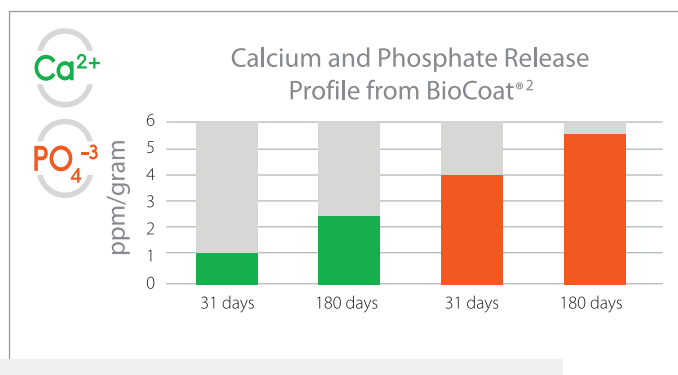
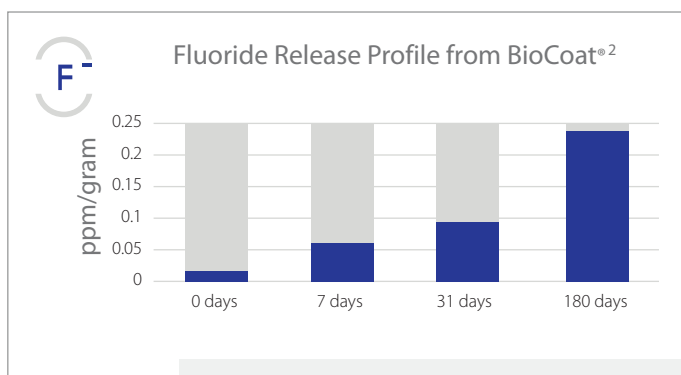
Bioactive Resin Pit & Fissure Sealant

Bioactive Release - Remin - Recharge

Maximize protection with award-winning BioCoat® Bioactive Resin Pit and Fissure Sealant. BioCoat with SmartCap™ Technology¹ maintains the strength and durability of a heavily filled resin sealant, while providing the benefits of extended fluoride release.

BioCoat® is the only resin sealant with bioavailable ions

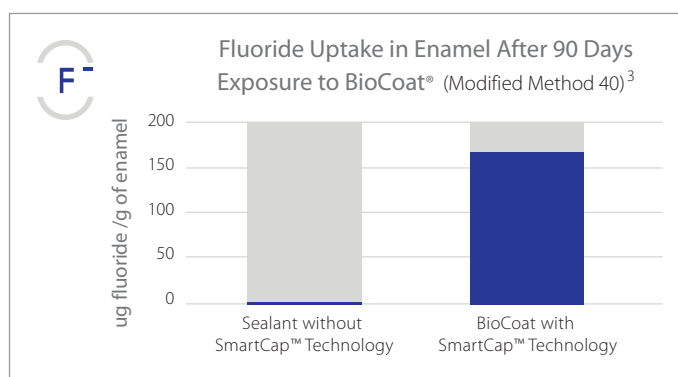
SmartCap Technology utilizes patented semi-permeable resin microcapsules filled with ionic solutions of fluoride, calcium and phosphate. The bioactive ions diffuse in and out of the sealant for long term release.*



Even after 6 months, fluoride, calcium and phosphate ion release continues at a significant rate.

Greater fluoride uptake for long-term protection

- Greater fluoride uptake in the presence of calcium and phosphate ions strengthens enamel.
- Calcium, phosphate and fluoride ions strengthen tooth enamel and protect against acid attacks.
- Exceptional retention seals margins against microleakage.



SmartCaps are rechargeable

SmartCap microcapsules have the ability to recharge from free ions of fluoride⁴, calcium⁵ and phosphate⁵ found in saliva through concentration gradient dynamics.

1. Bibliography available upon request. / 2. A. Kava et al. "Controlled Release of Microencapsulated Remineralizing Agents from Pit-and-Fissure Sealants" IADR poster, Boston, 2015 / 3. S. M. Gross et al. "Pit and Fissure Sealant with Ion Permeable Microcapsules Promote Fluoride Uptake in Enamel" IADR poster, Boston, 2015 / 4. B. Burbank et al. "Enhanced Release of Toothpaste Originated Fluoride from Microcapsule-Containing Dental Materials" IADR poster, Boston, 2015 / 5. T. Greving et al. "Two-Way Permeability Of Ion Permeable Microcapsules for Remineralization" AADR Annual Meeting, March 21-24, Tampa, FL. / *Charts represent cumulative release data.

Outstanding barrier protection

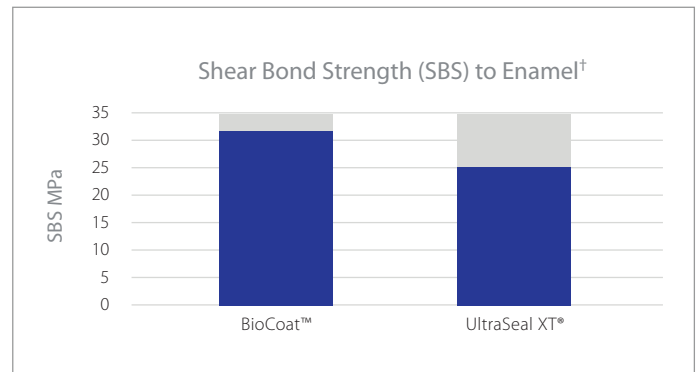
BioCoat® is a 56% filled resin sealant providing excellent long-term resistance to wear with a compressive strength comparable to flowable composites. The resin formula is very resistant to oral solubility - a problem glass ionomer and resin-reinforced glass ionomers sealants cannot overcome.

Heavily Filled & High Compressive Strength

- Excellent retention and durable: resists cracking, chipping and fractures
- Lowers polymerization shrinkage and gap formation
- Maintains a smooth surface to avoid accumulation of plaque and debris

Excellent Flowability

- Penetrates and adapts into the smallest pits and fissures for a secure seal
- Highly retentive (Shear bond strength of 32 MPa)
- Bubble-free application



BioCoat's impressive shear bond strength of 32MPa ensures BioCoat's retention over the years.

- 3001530 BioCoat Standard Pack
Contains: One 1.2ml syringe and five disposable applicator tips
Shade: White
- 3001535 BioCoat Applicator Tips
Contains: 100 disposable applicator tips

- 3001531 BioCoat Value Pack
Contains: Four 1.2ml syringes and 20 disposable applicator tips
- 3001532 BioCoat Bulk Pack
Contains: Twenty 1.2ml syringes

BioCoat is **not** formulated with Bisphenol A (BPA).



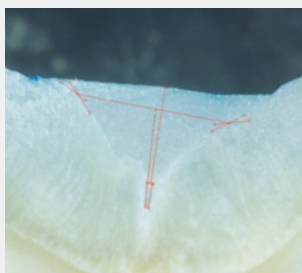
SmartCap Technology, developed in partnership with Creighton University, utilizes patented** semi-permeable resin microcapsules.

In BioCoat, the rechargeable SmartCap microcapsules are filled with ionic solutions of fluoride, calcium and phosphate. Tooth surfaces, both in contact and adjacent to the sealant, benefit from the extended release of these ions. The demineralization cycle is disrupted and the remineralization is supported. The exchange of ions and recharge of microcapsules extends maximum protection without putting the sealant's physical integrity at risk.

Visit www.premusa.com/biocoat for more information.

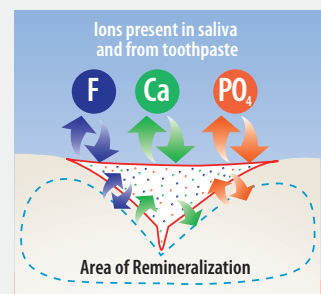
**United States Patent Numbers: US 9,119,774; US 8,889,161; US 8,735,463

Figure A
Dye Penetration
Microleakage Study



BioCoat's thixotropic properties allow for thorough penetration and adaptation into even the tiniest pits and fissures. No dye penetration indicates no microleakage.‡

Figure B
Schematic of clinical situation
seen in Figure A



- Sealant
- - - Area of Remineralization
- SmartCap Microcapsules

† Testing by Mark A. Latta, D.M.D., M.S., GL Materials LLC. / UltraSeal XT® is not a registered trademark of Premier Dental. / ‡ BioCoat Micrograph taken after Dye Penetration Microleakage Study (21 days at 37°C and then thermocycled for 2000 cycles)

Enamelon®

Preventive Treatment Gel

Be the Hero!

Here's a great way to please your patients. Next time patients complain of sensitivity or symptoms from dry mouth, come to the rescue with Premier's Enamelon. Enamelon Preventive Treatment Gel stops sensitivity in its tracks through its patented combination of stannous fluoride and ACP technology. Provides 3x greater protection against acid challenges than the 5000ppm F pastes to help prevent caries.⁶ Also reduces symptoms of dry mouth tissues through it's proprietary long-lasting coating that soothes and lubricates.

Enamelon is your professionally dispensed solution to give your patients the relief they want and the enamel protection they need. Every time.

Treats sensitivity

Occludes tubules with ACP & Fluoride

Dental hypersensitivity is under-reported by the patient.⁷ Enamelon Treatment Gel is your professionally dispensed solution.

Enamelon® contains stannous fluoride along with calcium and phosphate ions that have proven effective for tubule occlusion. By blocking the exposed tubules with a combination of stannous (tin) ions along with fluoride, calcium and phosphate salts, a physical barrier is created that covers open dentinal tubules to prevent external stimuli from causing pain or discomfort.

Soothes dry mouth tissue

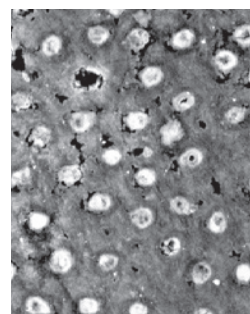
Enamelon provides an immediate and long lasting soothing, moisturizing and lubricating effect.

Through the use of proprietary co-polymers, Ultramulsion® benefits your patients by providing a long-lasting coating that lubricates and soothes the soft tissues of the mouth.

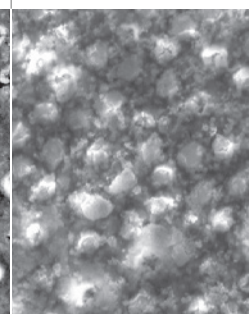
Enamelon is the only stannous fluoride preventive treatment gel that has been shown in a clinical trial to help reduce many sensory symptoms of dry mouth.⁸



Backscattered Electron
Analysis



Secondary Electron
Analysis



SEM of the occluded dentinal tubules after day 5
(10 applications) with Enamelon.
10 µm Mag = 1.00 K, XEHT = 20.00 kV



6. Schemehorn BR, DiMarino JC, Movahed N. Comparison of the Enamel Solubility Reduction from Various Prescription and OTC Fluoride Toothpastes and Gels. Journal of Clinical Dentistry, 2014; 25:61-64. / 7. Kamath Deepa G & Nayak Sangeeta U. Dentinal hypersensitivity and its management – An informed view, J.Pharm Biomed Sci. 2013, February ; 27(27):474-479. (Article no 09) / 8. Milleman J.L., Milleman K.R., Santos S.L., Proskin H.M., Battershell K.K., DiMarino J.C.A. Subjective Assessment of Enamelon® Preventive Treatment Gel in A Self-reported Dry-mouth Population. Compend Contin Educ Dent. 2016;37(8): E6-E10.

All patients can benefit from Enamelon

Enamelon®	Anti-Caries	Anti-Sensitivity	Anti-Gingivitis
Attrition (Bruxism)		✓	
Caries Risk based on CRA ¹⁰	✓		
Crown & Bridge Protection	✓	✓	✓
Dental Erosion	✓	✓	
Gastric Reflux Disease GER/GERD	✓	✓	
History of ECC ¹¹	✓		
History of Pit & Fissure Caries	✓		
ICDAS Prevention Care ¹²	✓		
Oncology	✓	✓	✓
Orthodontic	✓		✓
Pediatric	✓		✓
Periodontal	✓	✓	✓
Polypharmacy	✓	✓	
Pregnancy/Maternity	✓		✓
Recession	✓	✓	✓
Special Needs Patients	✓	✓	✓
Whitening/Bleaching		✓	
Xerostomia/Dry Mouth	✓	✓	✓

9007285 Enamelon® Preventive Treatment Gel
4.0 oz (113 g), Clean Mint, 12/case

Not available in Canada.

9. Schemehorn BR, DiMarino JC, Movahed N. Comparison of the Incipient Lesion Enamel Fluoride Uptake from Various Prescription and OTC Fluoride Toothpastes and Gels. Journal of Clinical Dentistry, 2014; 25:57-60 / 10. CRA=Caries Risk Assessment curriculum. (ADA, AAPD, CAMBRA, etc) / 11. Early Childhood Caries is defined as the presence of one or more decayed (non-cavitated or cavitated lesions), missing (due to caries) or filled tooth surfaces in any primary tooth in a preschool-age child between birth and 71 months of age. The term "Severe Early Childhood Caries" refers to "atypical" or "progressive" or "acute" or "rampant" patterns of dental caries. – ADA Statement on Early Childhood Caries. www.ada.org/2057.aspx / 12. ICDAS (International Caries Detection and Assessment System) is detection and assessment system classifying states of the caries process. www.icdas.org

More protection Less fluoride^{6,9}



Enamelon provides 3x greater reduction of enamel solubility⁶

- Reduces the solubility of enamel, preventing demineralization of the tooth surface when exposed to acids
- Decreases enamel solubility by 56.91% compared to 18.78% with 5000 ppm fluoride paste, providing 3x greater protection against acid challenges⁶
- Provides over 2x more beneficial fluoride uptake with only one-fifth the amount contained in 5000 ppm fluoride toothpastes⁹

Dispense with confidence!

“Patients that have tried a sensitive toothpaste and have not had any relief, we offer the Enamelon Treatment Gel for the generalized sensitivity. For our dry mouth patients, we offer the Enamelon to help aid in the relief to dry mouth tissues, as well as protect them from caries.”

- Dr. P., DMD & C. B., RDH, BS, Connecticut



Enamelon®

Fluoride Toothpaste

0.45% Stannous Fluoride (1150 ppm F)



Enamelon® Toothpaste contains the same clinically proven active ingredient optimized with calcium and phosphate ions as the preventive treatment gel, but in an 1150 ppm F formulation with a low abrasive for everyday use.

- Aids in the prevention of cavities
- Builds increasing protection against painful sensitivity of the teeth to cold, heat, acids, sweets or contact
- Helps to prevent gingivitis
- Helps to interfere with the harmful effects of plaque associated with gingivitis
- Delivers more fluoride uptake to the teeth^{9,22}
- Strengthens teeth better than the 5000 ppm F toothpastes⁹
- Promotes remineralization and inhibits demineralization
- Soothes and moisturizes discomfort associated with dry mouth tissues
- Low-abrasive toothpaste (RDA of 39)
- Contains no SLS, gluten or dyes

9007280 Enamelon® Toothpaste
4.3 oz (122 g)
Mint Breeze, 12/case

9007290 Enamelon® Toothpaste
0.75 oz (21.2 g)
Mint Breeze, 24/case

Not available in Canada.



Science Defined

Amorphous Calcium Phosphate (ACP) -

Building blocks of tooth mineral^{13,14,15,16}



The most reactive and soluble calcium phosphate compound, ACP forms on the tooth enamel, within the dentinal tubules and provides a calcium and phosphate reservoir. Research shows that available ACP on the enamel can prevent damaging erosion by stimulating remineralization of tooth structure.^{17,18,19} Introducing calcium and phosphate back into the surface of the tooth with products containing ACP technology is an ideal strategy to reverse the demineralization process.

The ACP-forming ingredients also strengthen teeth by acting as an enhanced fluoride delivery system to deliver more fluoride than products without ACP.²³ The patient has the benefit of fluoride uptake without greater exposure to higher fluoride concentrations or volumes. ACP combines with fluoride to desensitize dentin. Fluoride, along with ACP, occludes tubules by depositing tooth-like minerals to create a semi-permanent reduction in hydraulic conductance. This is a proven mechanism to reduce dentinal hypersensitivity.

Value of Fluoride Sources

Fluoride reacts with tooth mineral, forming either fluoridated apatite (firmly-bound) or calcium fluoride (loosely-bound).

Firmly-bound fluoride, incorporated onto the surface of the crystals of apatite, can reduce the solubility of tooth mineral and hence inhibit demineralization due to acids generated by plaque bacteria.¹⁷

Loosely-bound (labile F) fluoride provides a relatively slow-release form of ionic fluoride to plaque and saliva.¹⁸ There has been renewed interest in loosely-bound fluoride as a reaction product of fluoridation to act as a potential "reservoir" source of solution fluoride enhancing remineralization and retarding demineralization processes.¹⁸





Enamel Pro®

Prophy Paste

The only prophy paste with ACP technology for 31% more fluoride uptake

Enamel Pro is different. Premier's innovative remineralization prophy paste is uniquely formulated to deliver ACP (amorphous calcium phosphate). Why does that matter? Because increased fluoride uptake is critical to strengthening tooth enamel and reversing the demineralization process. Plus, Enamel Pro prophy paste provides an intense polish and shine. Your patients will love their lustrous whiter, brighter teeth.^{16,21} And the colorful swirl cups and great tasting newest flavors – ChocHazelnut and Mixed Berry – will keep them smiling. Every time.

	Fine	Medium	Coarse
Mint**	9007600	9007601	9007602
VanillaMint	9007617	9007618	9007619
RaspberryMint	9007620	9007621	9007622
Grape	9007610	9007611	9007612
Mixed Berry	9007630	9007627	9007631
Strawberry	9007607	9007608	9007609
Bubblegum	9007614	9007615	9007616
Cinnamon	9007604	9007605	9007606
ChocHazelnut		9007632	9007633
Mint (no fluoride)			9007613

**Also available in Mint Extra Coarse 9007603

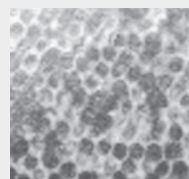
Each box of Enamel Pro® contains 200 single-use cups, packaged in a foil bag and a Comfy-Grip™ prophy cup holder.

9007650 Comfy-grip™ cup holder (3)

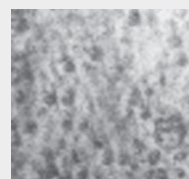
Intense Polish & Shine

Greater luster for whiter, brighter teeth^{16,21}

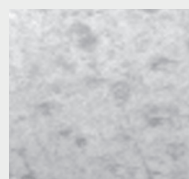
Zygo® non-contact profilometry intensity map profiles



Enamel surface before prophy polishing



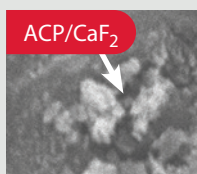
After prophy polishing with leading prophy paste



After prophy polishing with Enamel Pro®



13. Tung, M.S., Eichmiller, F.C., Paffenberger Research Center. ADAHF. NIST. Gaithersburg, MD. "Dental Applications of Amorphous Calcium Phosphates" Journal of Clinical Dentistry, Vol.10, Issue 1, 1999. / 14. Tung, M.S., Eichmiller, F.C. "ACP for Tooth Mineralization", Compendium Cont. Educ Dent, Vol.25, No. 9, Suppl. 1, Sept. 2004, p 9-13. Journal Code 9600713, Journal Subset MEDJSD, ISSN 1548-8578. Corp. Author: American Dental Association Foundation. / 15. Tung, M., Eichmiller, F., Gibson, H., Ly, A., Skrtic, D., Schumacher, G., (ADAHF Paffenberger Research Center, NIST, Gaithersburg, MD), "Dentin Desensitization by in situ Formation of Calcium Phosphate", J. Dent Res 76 (IADR Abstracts):2985, 1997 / 16. Tung, M.S., O'Farrell, T.J., Liu, D.W., Paffenberger Research Center. ADAHF. NIST. Gaithersburg, MD. "Remineralization by Amorphous Calcium Phosphate Compounds" Journal of Dental Research, Vol. 72, Abstract No. 1738, 1993. / 17. Schemehorn, B.R., Wood, G.D., McHale, W., Winston, A.E., "Comparison of Fluoride Uptake into Tooth Enamel from Two Fluoride Varnishes Containing Different Calcium Phosphate Sources", J Clin Dent, 2011;22:51-54. / 18. White, D.J and Nancollas, G.H. "Physical and Chemical Considerations of the role of firmly and loosely bound fluoride in caries prevention", J Dent Res, 1990, 69:587-594. / 19. Tung, M.S., Malerman, R., Huang, S. and McHale, W.A. "Reactivity of Prophylaxis Paste Containing Calcium, Phosphate and Fluoride Salts", Journal of Dental Research, Vol. 84, Special Issue A, IADR Abstracts, 2005. / 20. Source: "Final Report: Enamel Fluoride Uptake Study #05-106, Modified FDA Method #40," Dental Products Testing, Indiana University Emerging Technologies Center, December 2005. / 21. Winston, A.E., Charig, A., Patel, V., McHale, W.A. and Malerman, R. "Effect of Prophy Pastes on Surface of Tooth Enamel", Journal of Dental Research, Vol. 84, Special Issue A, IADR Abstracts, 2005. / 22. Schemehorn, B.R., Orban, J.C., Wood, G.D., et al. Remineralization by Fluoride Enhanced with Calcium and Phosphate Ingredients, Journal of Clinical Dentistry, 1999; 10(1 spec. no.):13-16.



Amorphous calcium phosphate and calcium-fluoride mineral on dentin surface and in tubules

Indications for Use

Enamel Pro® Varnish is a fluoride containing preparation for the treatment of dentinal hypersensitivity, and for the reduction of post operative sensitivity.

5% NaF Varnish

Box of 35

- 9007540 Strawberries 'n Cream 0.40ml
- 9007541 Bubblegum 0.40ml
- 9007547 VanillaMint 0.40ml
- 9007542 Bubblegum 0.25ml

Box of 200

- 9007543 Strawberries 'n Cream 0.40ml
- 9007544 Bubblegum 0.40ml
- 9007545 VanillaMint 0.40ml

Each box contains single-unit doses and an applicator brush, post-application patient care instructions and doctor's directions for use.

VanillaMint is not available in Canada.



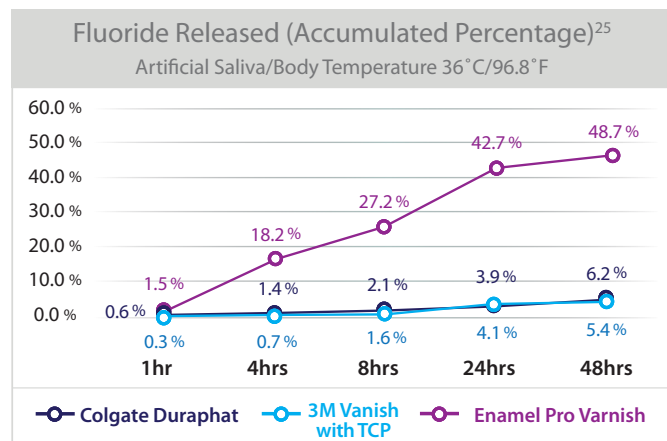
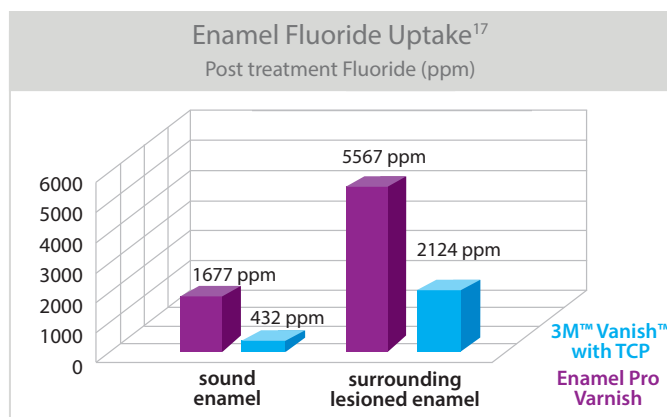
Enamel Pro® Varnish

5% Sodium Fluoride Varnish



Varnish Best Practice for Your Practice

All varnishes are not equally effective! Enamel Pro Varnish is the first advanced fluoride varnish optimized to provide beneficial tooth-building ions of calcium and phosphate. Uniquely designed to create substantive forms of CaF_2 and ACP, Enamel Pro Varnish is ideal for reducing dentinal hypersensitivity and post-operative sensitivity. In fact, independent studies show Enamel Pro Varnish delivers more enamel fluoride uptake and greater fluoride release than 3M™ Vanish™.^{17,25} And unlike other varnish, Enamel Pro Varnish is proven to diminish hydraulic conductance by 73%.²⁴ Every time.



In a study evaluating incubation conditions on fluoride release in vitro, Enamel Pro Varnish displayed greater fluoride release than both 3M Vanish and Colgate® Duraphat®.²⁵

Tastytooth® Varnish

5% Sodium Fluoride Varnish

Tastytooth – our name says it all!

Delight your patients with an affordable great tasting varnish made from a blend of xylitol and sucralose. The silky smooth formula is easy to apply, has high-impact flavors and is gluten-free. Every time.

Contents: 100 (0.5mL) single-dose, 100 applicator brushes and Directions for Use.

9007580 Caramel

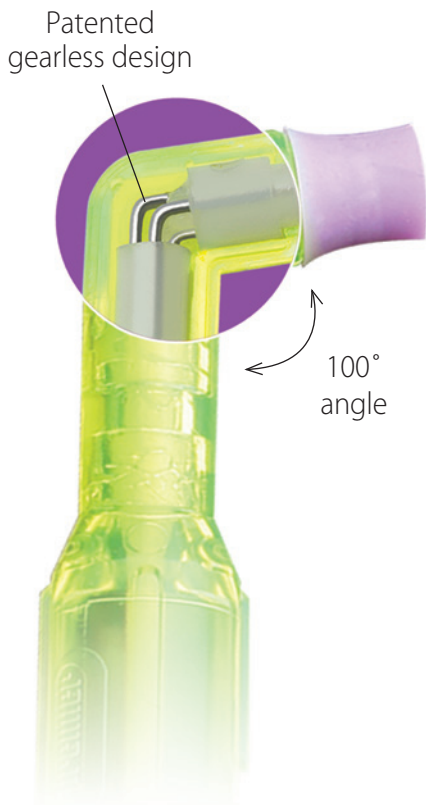
9007581 Melon

9007582 Bubblegum

Post-treatment patient care instructions are available for download at premierdentalco.com



23. Source: "Final Report: Enamel Fluoride Uptake Study #08-151, Modified FDA Method #40V", Dental Products Testing, Therametric Technologies, Inc., Indiana University Emerging Technologies Center, March 2008. / 24. "Effect of Calcium Phosphate Containing Fluoride Varnish on Dentin Permeability", Tung, M.S., Torres, J., (ADAHF Paffenbarger Research Center, NIST, Gaithersburg, MD and U.S. Navy Dental Corps, Bethesda, MD), J Dent Res 86 (Spec Iss A): 0985, 2008 (www.dentalresearch.org) / 25. Fluoride Release from Fluoride Varnishes is Affected by Incubation Conditions C. Gonzalez-Cabezas, S.E.Flannagan, R. Krell, M. Uekihara, and C.C. Niquette, Dent Res 91(Spec Iss A):1094, 2012 (www.dentalresearch.org). / *Colgate and Duraphat are not registered trademarks of Premier Dental Products Company. / ™3M and Vanish are not trademarks of Premier Dental Products Company.



Top Propy Angle
Top Propy Angle
2013, 2014 & 2015



Top Hygiene Product for 2011

2pro®

Total Access Disposable Propy Angle

Award-winning 2pro is the versatile 2-in-1 disposable propy angle that helps you easily access hard-to-reach areas of the mouth quickly. One cup. One tip. No extra cost or time to switch. Which means a better cleaning experience, happier patients and less chair time! 2pro is your all in one polishing angle. Every time.

- Patented gearless, jam-free design - quiet, smooth polishing
- Angled neck for easier total access - makes hard-to-clean areas a breeze
- Advanced 2-in-1 design - saves time, improves workflow
- Convenient access tip – efficiently cleans around ortho bracket

	Bag of 144	Bulk Package (1,000 angles)
Soft/Short Cup (purple cup)	5500101	5510001
Firm/Short Cup (blue cup)	5500102	5510002
Soft/Long Cup (white cup)	5500103	5510003
Firm/Long Cup (green cup)	5500104	5510004

Order through your authorized dealer.



Get Total Access!

2pro cleans and polishes all tooth surfaces with its unique cup and tip design!

No added expense for tips or brushes!

Use the cup to polish all tooth surfaces. Use the tip for gingival and proximal areas, occlusal surfaces, veneer margins, around implants and orthodontic brackets.

“ I absolutely love the Premier® 2pro® total access soft disposable prophyl angle. The cup shape reduces splatter and is easy to use. Being able to remove the cup and use the rubber point is great. This allows access around the orthodontic brackets and wires. ”

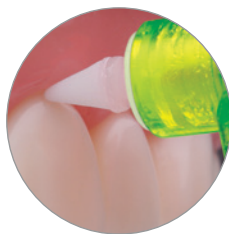
- Sandra B., RDH, Pennsylvania

Cup On



Facial surfaces

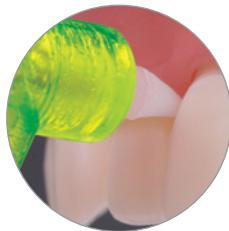
Cup Off



Veneer margins



Orthodontic brackets



Gingival/proximal





Perfecta® REV!® 14% Hydrogen Peroxide

Only 15 minutes, once a day!

The ideal combination for compliance - short wear time and less sensitivity.

Gel – Powerful whitening Gel

- 14% Hydrogen Peroxide – 55% higher concentration than the competition
- 15-minute daily wear time – Half the time of other brands
- Patented Water based gel that hydrates teeth as it whiten resulting in 66% less sensitivity than the leading strips^{32,33}

Rinse – Refreshing Finishing Rinse

- Provides added boost to final whitening effect by activating any residual hydrogen peroxide ions
- Formulated with vitamin C that promotes healthy gums after treatment
- Patients will love the clean & fresh cool mint feeling

Suggest a REV! Refresher for all your previous whitening patients. Get them back to your office and keep them smiling white.

4000142 REV! Six Patient Paks

Each Patient Pak is a complete 2-week treatment. Contains 2 - 3cc syringes with 4oz (118.3ml) REV! finishing rinse. You add trays and tray cases.

4000141 REV! Six Refresher Paks

Ideal for touch-ups. Contains 1 - 3cc syringe with 4oz (118.3ml) REV! finishing rinse. You add trays and tray cases.

Available individually through dealer.



Perfecta® Bravó® 9% Hydrogen Peroxide

Only 30 minutes, once a day!

Patented water-based formulation hydrates teeth as they whiten to avoid sensitivity.

4000092 Bravó Patient Pak

Complete 2-week patient treatment. Contains 4 - 3cc syringes.

4000094 Bravó 50 Pak

Contains 50 - 3cc syringes. You add trays and tray cases.

4000091 Bravó Touch-Up Pak

Contains 1 - 3cc syringe.

Not available in Canada.

Perfecta® Carbamide Peroxide

Perfecta 16%

Can remove a full range of stains including those resulting from tobacco, dark beverages and even tetracycline. Wear time can be adjusted for light stains and for those patients with a history of thermal sensitivity.

Perfecta 21%

Tetracycline stains, fluorosis. Dispense only to compliant patients with no history of thermal sensitivity.



Not available in Canada.

Perfecta®

Perfecta® carbamide peroxide gels are formulated with a predominantly glycol base for minimal dehydration and sensitivity.

Perfecta Patient Pak

Complete 2-week patient treatment. Contains 6 - 3cc syringes with dispensing tips, tray case, tray material, patient instructions, doctor's instructions, and cosmetic patient pouch.

	Unflavored	Mint
16%	4000161	4000162
21%	4000211	4000212

Perfecta 50 Pak

Contains 50 - 3cc syringes with dispensing tips, 8 patient instructions, 25 prescription bags, doctor's instructions.

	Unflavored	Mint
16%	4004160	4004165
21%	4004210	4004215

Accessories

4008311	Tray Cases (24 Pearl White)
4008305	.040" Tray Material, 5 x 5" (25)
4008300	Perfecta Block-Out Resin

Standard Tubes 2-arch supply per tube

A tremendous value with 2 ounces (59cc) of whitening gel in a squeeze tube. Ideal for long-term cases (tetracycline).

4007115	11% Standard Tube	(Mint)
4007165	16% Standard Tube	(Mint)
4007215	21% Standard Tube	(Mint)

Not available in Canada.

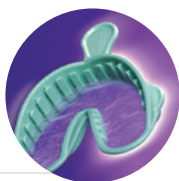
ALFA™ Triple Tray®

Full-arch Alginate Impression Making

Ideal for whitening trays - one step, two impressions!

Box of 24

Small	1006313	Large	1006333
Medium	1006323	Assorted	1006343



In-Office Tooth Whitening

Perfection White™

35% Hydrogen Peroxide Whitening

Four-Patient Kit 4008104



PremierAir™

Hygiene and Diagnostic Instruments

- Comfortable, balanced, ergonomic handle with non-slip grip means less pressure to maintain control and less hand fatigue
- Exceptionally light, rugged polymer handles and tested extensively to ensure a long working life
- Made to high standards by master craftsmen

Hygiene Instruments

- Precision tips made with 440A stainless steel and SmartSharp® Technology keep edges sharp and well defined

Probex and Explorers

- Probes are easy to read and resistant to wear
- Explorers have excellent tactile sensitivity and sharp points for easy detection of tooth texture and surface irregularities

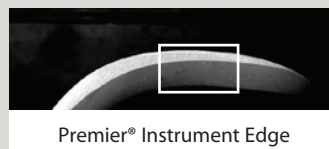


CE

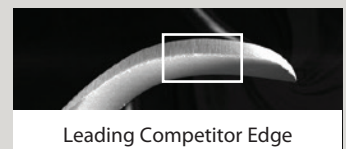
Premier® SmartSharp® Technology

Premier's innovation in sharpening technology allows you to start sharp and work smart:

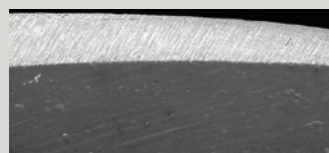
- Easily maintain sharpness – proprietary process ensures a well defined edge you can easily re-sharpen as needed
- Apply less pressure and use fewer strokes – achieve a glass-like tooth surface
- SmartSharp® available on Premier Scalers and Curettes – at no additional cost



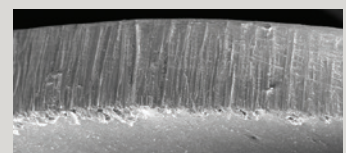
Premier® Instrument Edge



Leading Competitor Edge



A sharp edge ensures a smooth, precise cut with less hand fatigue.



An irregular edge is less efficient and can lead to more hand fatigue.

Sickle



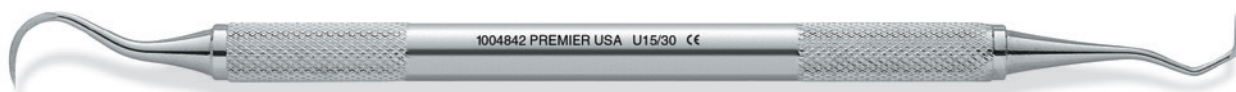
Wil 8 • BEUL-05681 • BE-1005130 • LT-1004877



H6/H7 • BEUL-05621 • BE-1005040 • LT-1004839 • LTO-1004589 **new!** • PremierAir-1004689



H5/33 • BEUL-05629 • BE-1005060 • LT-1004838 • LTO-1004588 **new!** • PremierAir-1004688



U15/30 • BEUL-05631 • BE-1005065 • LT-1004842 • LTO-1004592 **new!** • PremierAir-1004692



U15/33 • BEUL-05633 • BE-1005070 • LT-1004843 • LTO-1004593 **new!** • PremierAir-1004693



Nebraska 128 • BEUL-05680 • BE-1005125 • LT-1004876 **new!** • PremierAir-1004680



Morse 0/00 • BEUL-05695 • BE-1005855 • LT-1004855



NV1 Anterior • BEUL-05690 • BE-1005850 • LT-1004850 **new!** • PremierAir-1004681



NV2 Posterior • BEUL-05691 • BE-1005851 • LT-1004851 **new!** • PremierAir-1004682



NV4 • BEUL-05684 • BE-1005854 • LT-1004854 **new!** • PremierAir-1004684



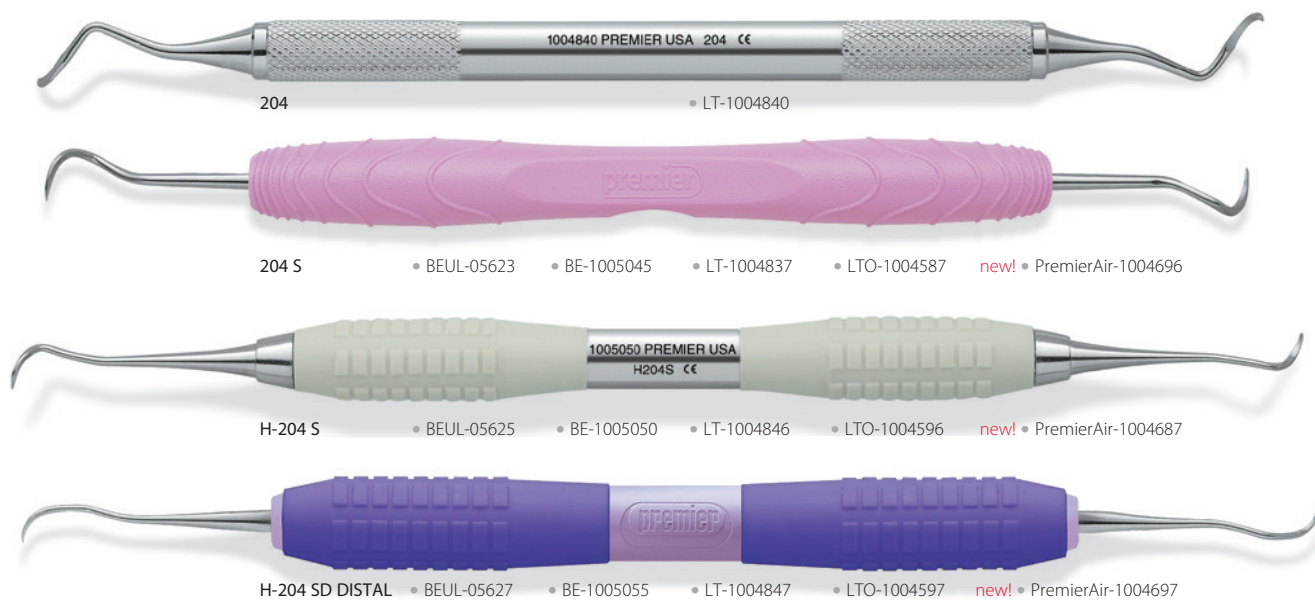
135 • BEUL-05694



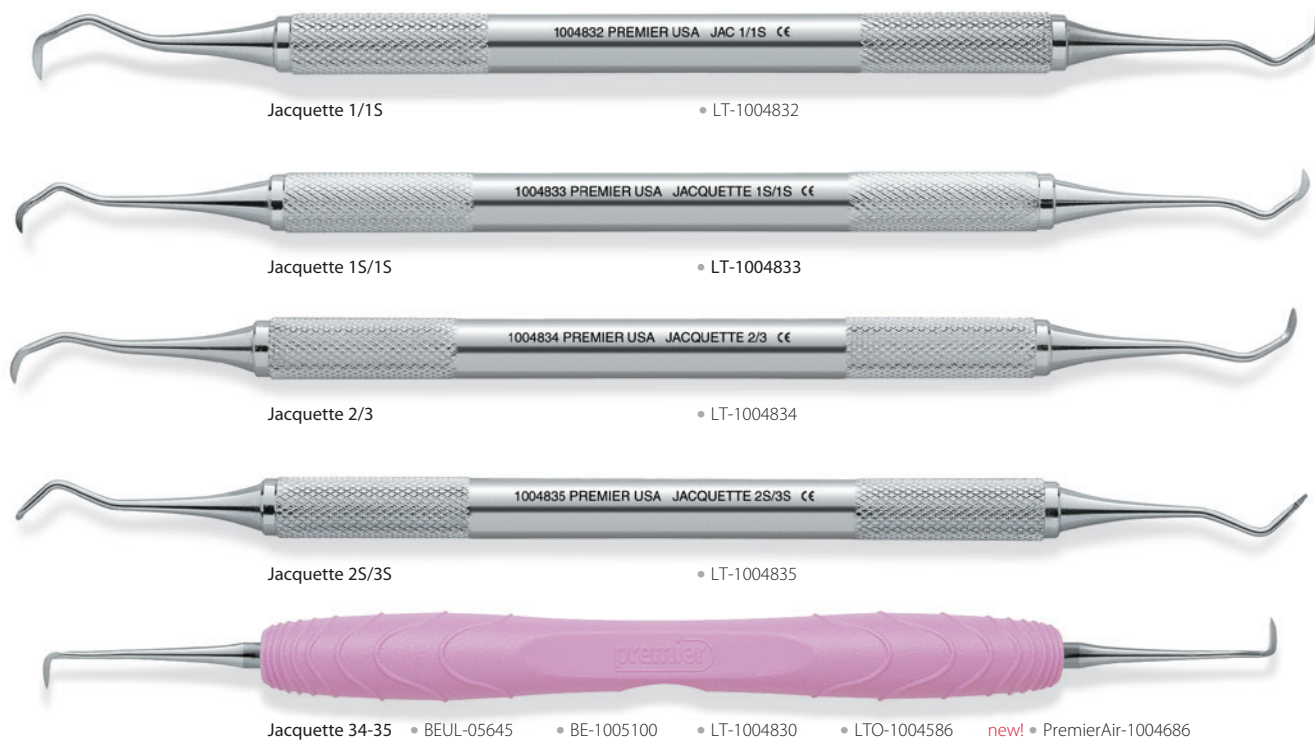
137 • BEUL-05692 • BE-1005852 • LT-1004852 **new!** • PremierAir-1004695



204 Series



Jacquette





Columbia



Columbia 2L/2R

• BE-1005028 • LT-1004800



Columbia 4L/4R

• BEUL-05615 • BE-1005030 • LT-1004801

new! • PremierAir-1004651



Universal Implant Scaler (Columbia 4L/4R)

2 pack • 9061401
5 pack • 9061400



Columbia 13/14

• BEUL-05617 • BE-1005035 • LT-1004802

new! • PremierAir-1004652

McCall



McCall 13/14

• BEUL-05635 • BE-1005075 • LT-1004823



McCall 13S/14S

• BEUL-05639 • BE-1005085 • LT-1004821 • LTO-1004571

new! • PremierAir-1004671



McCall 17/18

• BEUL-05637 • BE-1005080 • LT-1004824



McCall 17S/18S

• BEUL-05641 • BE-1005090 • LT-1004822

new! • PremierAir-1004672

Younger-Good



Younger-Good 7/8

• LT-1004875



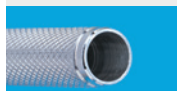
H Younger-Good 7/8 • BEUL-05693



**Big Easy®
Ultralite™ (BEUL)**
1/2" diam., 16g



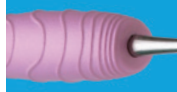
Big Easy® (BE)
7/16" diam.
23g



**Light Touch™
Round (LT)**
5/16" diam.
21g



**Light Touch™
Octagon (LTO)**
1/4" diam.
18g



PremierAir™
Scalers & Curettes
15g



PremierAir™
Probes & Explorers
12g

Gracey



Gracey 1/2 • BEUL-05601 • BE-1005001 • LT-1004810 **new!** • PremierAir-1004660
Short shank for incisors and cuspids



Gracey 3/4 • BEUL-05603 • LT-1004811 **new!** • PremierAir-1004661
Short contra-angle shank for incisors and cuspids



Gracey 5/6 • BEUL-05605 • BE-1005010 • LT-1004812 **new!** • PremierAir-1004662
Medium shank for cuspids and molars



Gracey 7/8 • BEUL-05607 • BE-1005015 • LT-1004813 **new!** • PremierAir-1004663
Medium contra-angle shank for bicusps and molars, buccal and lingual surfaces



Gracey 9/10 • BEUL-05609 • BE-1005018 • LT-1004814
Long contra-angled for molars with more acute blade angle



Gracey 11/12 • BEUL-05611 • BE-1005020 • LT-1004815 • LTO-1004565 **new!** • PremierAir-1004665
Triple angulation for easy access to buccal/mesial and lingual/mesial surfaces of premolars and molars



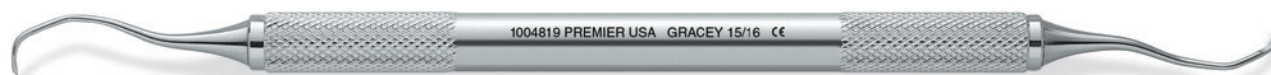
Gracey 13/14 • BEUL-05613 • BE-1005025 • LT-1004816 • LTO-1004566 **new!** • PremierAir-1004666
Triple angulation for easy access to distal/posterior surfaces of premolars and molars



Gracey 11/14 • LT-1004817
For easy access to a facial or lingual sextant with a single instrument.



Gracey 12/13 • LT-1004818
For easy access to a facial or lingual sextant with a single instrument.



Gracey 15/16 • BEUL-05653 • BE-1005026 • LT-1004819 • LTO-1004569
Angled shank, designed to reach mesial surfaces of posterior teeth

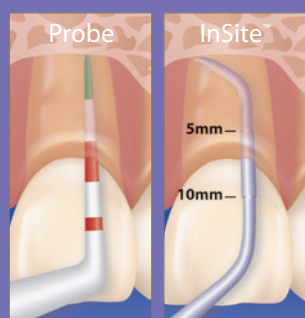


Gracey 17/18 • BEUL-05655 • BE-1005027 • LT-1004820
Highly angled shank for reaching distal surfaces of posterior teeth



Gracey	BEUL	BE	LT	PremierAir	Rigid LT
1/2	05601	1005001	1004810	1004660	1004790
3/4	05603	—	1004811	1004661	1004791
5/6	05605	1005010	1004812	1004662	1004792
7/8	05607	1005015	1004813	1004663	1004793
9/10	05609	—	1004814	—	—
11/12	05611	1005020	1004815	1004665	1004795
11/14	—	—	1004817	—	—
12/13	—	—	1004818	—	—
13/14	05613	1005025	1004816	1004666	1004796
15/16	05653	1005026	1004819	—	1004797
17/18	05655	1005027	1004820	—	—

		InSite Pocket Scalers			InSite Mini Pocket Scalers
Gracey	BEUL	BE PS	LT PS	BEUL MPS	LT MPS
1/2	05660	—	—	05670	1004894
3/4	05661	1005202	—	05671	—
5/6	05662	—	1004883	05672	—
7/8	05663	—	—	05673	1004897
9/10	—	—	—	—	—
11/12	05665	1005205	1004890	05675	—
11/14	—	—	—	—	—
12/13	—	—	—	—	—
13/14	05666	1005208	1004892	05676	—
15/16	05667	—	—	05677	1004906
17/18	—	—	—	—	—



After probing, InSite™ scalars provide added visual confirmation that you have reached the base of the pocket.

Gracey Variations

Pocket Scalers (PS) and Mini Pocket Scalers (MPS) have a slender and longer terminal shank to provide access into deeper pockets. MPS has the same slender tip design as PS, but with half the blade length. InSite PS and MPS have a depth gauge at 5mm through 10mm offering an excellent visual guide.

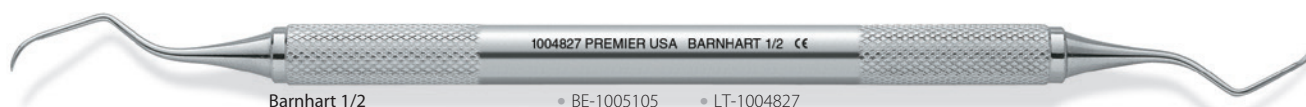
Big Easy Ultralite Pocket Scalers (PS) and Mini Pocket Scalers (MPS) do NOT feature the depth gauge found in InSite Scalers

Rigid Gracey designs have a thicker shank than the original Graceys, but are overall slightly shorter for increased strength when removing heavy calculus.



BEUL PS BEUL MPS InSite PS InSite MPS Gracey Rigid

Barnhart



Barnhart 1/2

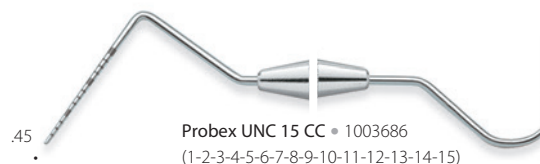
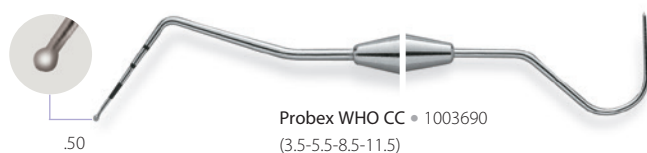
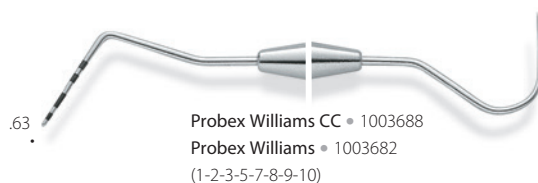
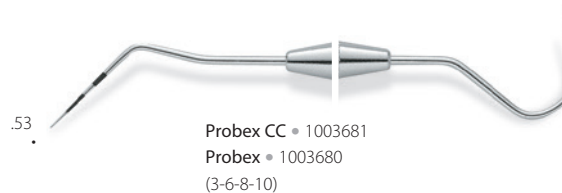
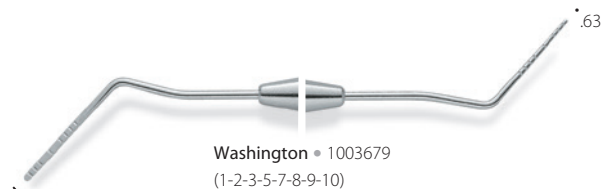
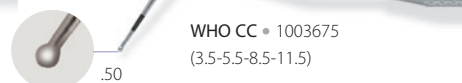
• BE-1005105 • LT-1004827



Barnhart 5/6

• BEUL-05643 • BE-1005110 • LT-1004829

new! • PremierAir-1004679



Tip diameter measurements in millimeters. CC indicates color coding.

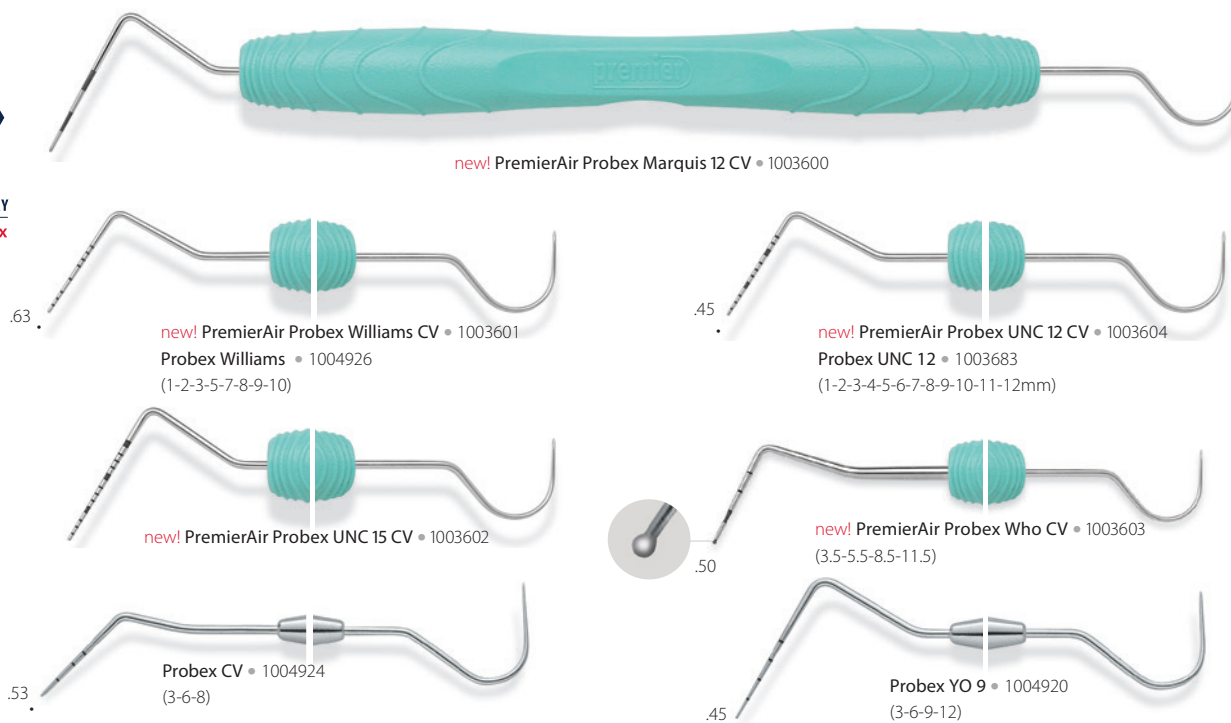
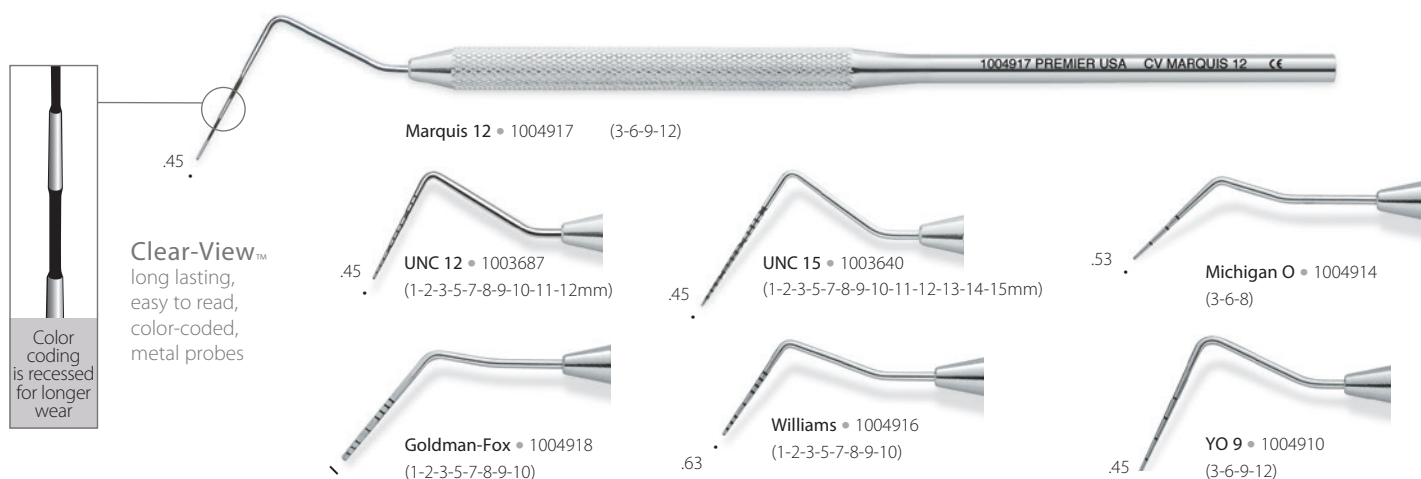
ComfortView® Lip & Cheek Retractor

- Retracts lips and cheeks for optimal buccal and gingival access
- Maximum visibility and patient comfort
- Suitable for use in diagnostic, preventative, therapeutic dental applications, in-office whitening, digital impression scanning and intra-oral photography
- Autoclavable, latex free

9061381 Universal ComfortView Lip and Cheek Retractor - 2 per box (white)

9061383 Small ComfortView Lip and Cheek Retractor - 2 per box (blue)

9061382 ComfortView Refill Cushions -10 per pack



Tip diameter measurements in millimeters.



CF 6 • 1003512

CF 6XT • 1003116

OCT 6 • 1003492



CF 6L • 1003513



CF 6L-H • 1003511



CF 17 • 1003514



CF 23 • 1003515
CF 23 12-PK • 1003962
CF 23XT • 1003118
OCT 23 • 1003495

Cavity Finder™ Explorer

- Improved tactile sensitivity via multi-piece construction
- Thin, yet sharp and durable tips



new! PremierAir CF 2 • 1003564

CF 2 • 1003522

CF 2XT • 1003119

OCT 2 • 1003502

CF 2 12-PK • 1003963



new! PremierAir CH3 • 1003563

CF 3CH • 1003527

CF 3CH 12-PK • 1003965



new! PremierAir 5 • 1003560

CF 5 • 1003523

CF 5 12-PK • 1003964

CF 5XT • 1003120

OCT 5 • 1003503



new! PremierAir 6/23 • 1003565

CF 6/23 • 1003526

OCT 6/23 • 1003506



new! PremierAir OD 11/12 • 1003562

CF ODH 11/12 • 1003549



new! PremierAir TU 17/23 • 1003566

CF TU 17/23 • 1003509



CF 2CH • 1003528



CF 6 • 1003524

OCT 6 • 1003504



CF 11/12 • 1003529

Mirror Handles



Cone Socket with Big Easy® Handle • 1005115



Cone Socket • 1003582



Simple Stem with Big Easy® Handle • 1005120



Simple Stem • 1003581

Big Easy® Ultrasonic Inserts

Big Easy cushion-grip ultrasonic inserts for improved ergonomic grip and comfort.

- Ergonomically designed large 7/16" diameter for maximum comfort and decreased fatigue
- Compatible with most magnetostrictive handpieces



Big Easy Ultrasonic Inserts - #10 Universal • 25K-1005300 • 30K-1005310



Big Easy Ultrasonic Inserts - #1000 Triple Bend • 25K-1005305 • 30K-1005315



Big Easy Ultrasonic Inserts - #100 Thin-tip • 25K-1005320 • 30K-1005330



"P" Style Inserts (External Flow)

P 50 • 25K-1006803 • 30K-1006903

P 100 - 30K • Straight-1006902



Big Easy Implant Ultrasonic Inserts • 30K-1005336

- Permanently attached PEEK tip will not scratch implants
 - PEEK is considered an advanced biomaterial used in medical implants
 - PEEK is non-abrasive and proven robust for long-lasting insert tips
- Effectively removes biofilm and calculus



Resin Handle Ultrasonic Insert - #10 Universal • 25K-1006800 • 30K-1006900



Resin Handle Ultrasonic Insert - #1000 Triple Bend • 25K-1006802 • 30K-1006901



Resin Handle Ultrasonic Insert - #100 Thin-tip • 25K-1006820 • 30K-1006920

CE Premier PerioWise® "The Friendly Probe"®

- Slightly flexible for greater patient comfort
- Clearly visible when using intra-oral camera



* An independent non-profit dental education and product testing foundation - January 2001./ **. "A Patient-Centered Approach to Periodontal Disease Detection." JOURNAL OF PRACTICAL HYGIENE; Vol. 8, Number 3; May/June 1999.



FREE screening system components
available from Premier!

A Fast and Accurate Screening System**

The patient Screening Report helps with patient education and compliance.

- Ideal for full examination or a quick screening
- Easy-to-read 3mm green band indicates periodontal health
- Reaching a red mark indicates the possible presence of periodontal disease
- Safe around implants
- Autoclavable

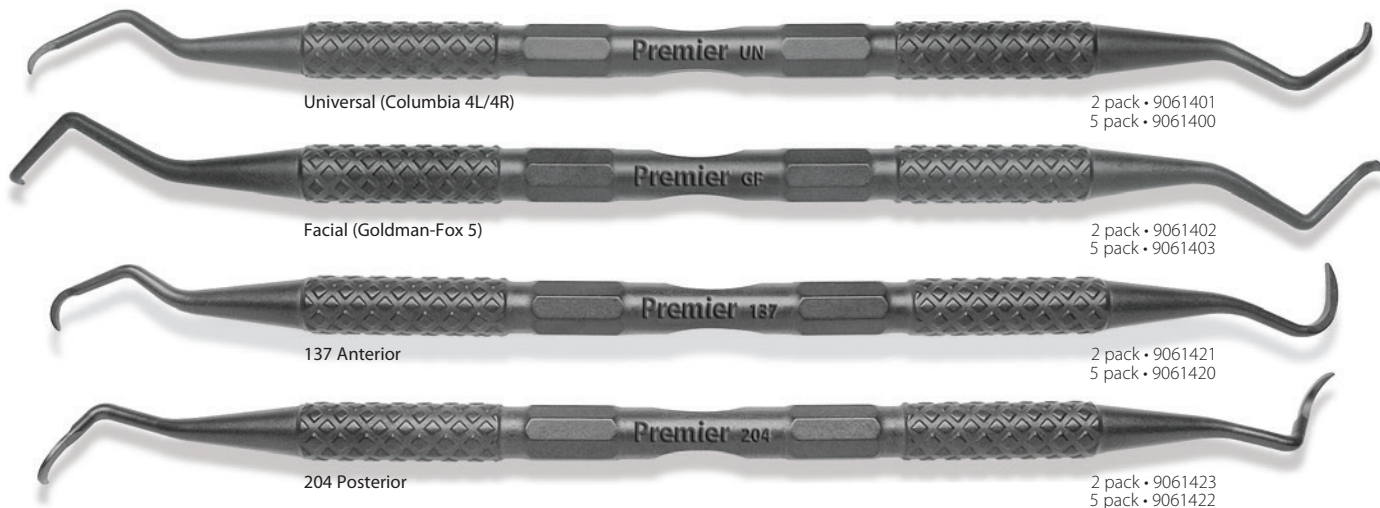
Premier PerioWise® UNC12 "The Friendly Probe"®

- Provides precision measuring of pocket depths with markings indicating 1mm increments up to 12mm
- Ideal for complete periodontal examinations and intraoral measurements

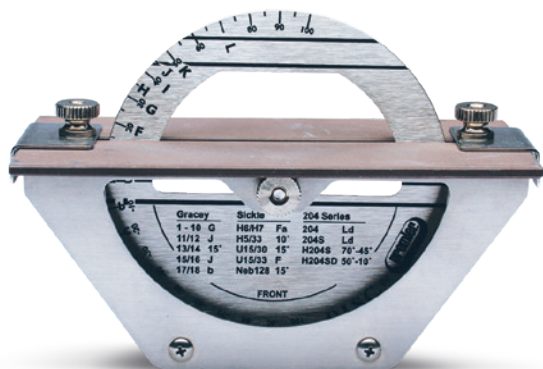


Implant Scalers

- Thin, slightly flexible and safe for use on implants
- Autoclavable (273°F/134°C)



The Cutting Edge in Precision Sharpening



Autoclavable D.I.S.C.™ CE

Instrument Sharpening System

- Simplifies sharpening
- Easy-to-use
- Quick and accurate
- No damage to cutting surface

9048200 Autoclavable D.I.S.C. complete with (2) sharpening stones and Comprehensive Guide to Sharpening

9048093 Sharpening Stone (1)



To view the D.I.S.C. tutorial, go to premierdentalco.com



Instrument Cassettes

Stainless Steel

- Proven reliability & quality performance
- Unique, hingeless design
- Compact, double-stack feature

9010904 Mark I (4 or 8 instruments)
 9010908 Mark VI (8 or 16 instruments)
 9010924 Mark IV (12 or 24 instruments)
 9010901 Accessory Cassette





new! Vac Attak™ GREEN

Safe, Effective and EPA-Compliant Evacuation System Cleaner

New Vac Attak™ GREEN is a high-performance evacuation system cleaner designed to comply with the EPA's Clean Water Act. Using a combination of powerful enzymes with powerful surfactant chemistry that gets the job done, Vac Attak GREEN's environmentally-friendly formula meets the ADA's best management practices. With a neutral pH, its non-foaming and non-corrosive formula has no chlorine or oxidizing agents. Safe and gentle for every day use with all amalgam separators, this evacuation system cleaner is still Vac Attak-tough to clean your lines of bio-burden, prophyl paste and fluoride gels.



- ✓ Powerful enzymatic, EPA-compliant cleaner
- ✓ Compatible with amalgam separators
 - pH neutral
 - No chlorine
 - No oxidizing agents
 - Non-foaming
 - Non-corrosive
- ✓ Up to 80 cleanings per jar
- ✓ Economical and easy-to-use powder
- ✓ Fresh citrus scent

9011105 Six, 800g jars with scoop dispenser

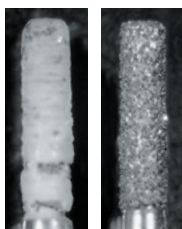
Brite Shield™

Instrument Cleaner and Protectant

- Static soak and ultrasonic cleaner
- Removes glass ionomer, carboxylate, zinc phosphate cements and bio-burden
- Unique passivation process coats instruments restricting ruts and corrosion
- Debrides clogged dental burs, removes alginate and stone from impression trays
- Economical and easy to use.
One jar makes up to 34 gallons
- Environmentally friendly

9011100 Six, 800g jars with scoop dispenser

Versatile and economical enzymatic cleaner



Before After
Cleaning a diamond bur with Brite-Shield
(Two Striper® shown)



CE

Vac Attak™

Evacuation System Cleaner

- Especially effective on prophy paste and fluoride gels
- Fast-acting
- Environmentally friendly
- Economical and easy to use
- Up to 100 cleanings per 800g jar

9011101 Six, 800g jars with scoop dispenser



CE

Vacu Blast™

Liquid Evacuation System Cleaner

Powerful enzymatic evacuation system cleaner that complies with EPA/ADA's Best Management Practices and is specifically formulated to be compatible with all amalgam separators.

- Neutral pH
- Phosphate and chlorine-free
- Anti-corrosive
- Non-foaming
- Refreshing eucalyptus scent
- Environmentally friendly

Use daily to keep your system operating at peak performance!

9011107 Case of 12 Bottles, 32 fluid oz (946ml)
Each bottle yields 64 treatments
32 oz bottle available individually through your dealer.



For a free sample, visit
premierdentalco.com/vacublastsample

CE



Pro Clean™

Professional Strength Tartar and Stain Remover
for Dentures, Partials, Retainers and Night Guards



- Extremely effective cleaner
- Environmentally friendly
- Easy to mix and use during patient's prophylaxis or dispense for patient home use

9011103 Box of 25 packets

9011102 Case of 10 boxes - (25 packets/box)



Removalon®-I

Removes Set Cements



- Effectively removes cements
- Convenient and easy to store
- Concentrated powder dissolves quickly
- Good for two months after mixing
- Environmentally friendly and biodegradable

9011005 Removalon-I Dry Pak

(6 expandable bottles - each fills up to 1/2 gallon - 1.9L)



Topicale®

Topical Anesthetic Gel Pumps

- Easy dispensing; minimizes waste
- 10-second onset
- 18% Benzocaine

1.51oz pumps (43g) 3 pumps per pkg

9007140	Assorted (Cherry, Raspberry, Pina Colada)
9007141	Cherry
9007142	Raspberry
9007143	Strawberry
9007144	Pina Colada



Topicale® Gel Jar

- 18% benzocaine formulation
- Use on areas of injection and/or prior to scaling and curettage to alleviate patient discomfort
- Topical fruit flavored
- 25% more material than 1oz jars

9007161 Gel - 35g / 1.25oz jar



Topicale® Xtra

Oral Anesthetic Gel

- Three fun flavors, with no bitter after-taste
- 20% Benzocaine formulation for rapid 10-second onset of surface anesthesia of soft tissue
- Economical 1oz jar (28.35g)

9007152	Very Berry Cherry
9007153	Mint Freeze
9007154	Jammin' Strawberry
9007155	Assorted package of 3



Topicale® Ointment

Unique water-soluble base releases active ingredients on contact; permits onset of anesthesia in less than 20 seconds! Provides deeper surface anesthesia.

- Orange-raspberry flavor
- 18% benzocaine formulation

9007151 Ointment - 35g jar



Prior to Injection



Oral Ulcers/Irritations

Topicale® GelPatch™

Once placed in the mouth, Topicale GelPatch dissolves gradually - releasing benzocaine to anesthetize surface tissue for up to 20 minutes. Ideal for denture sores, prior to injection and oral ulcer/irritations - appropriate for patient home use.

- Fast acting
- Self-dissolving
- Flexible

9007149 GelPatch - (25) Mint



Topicale and Topicale Xtra are Gluten-free. Not available in Canada.





premierdentalco.com/promise

We'll go the extra mile, every time.

We promise to:

- ✓ Make it easy to do business with us
- ✓ Provide innovative, standard-setting solutions
- ✓ Be your Product Concierge – for knowledge and service
- ✓ Make it right if we fall short



Premier® Dental Products Company • 1710 Romano Drive, Plymouth Meeting, PA 19462, USA
Phone 888-670-6100 • 610-239-6000 • Fax 610-239-6171 • premierdentalco.com • E-mail: info@premierdentalco.com



MDSS GmbH
Schiffgraben 41
30175 Hannover, Germany



8610402 0219047 Rev36 NKP15M