

Greater comfort & control!



137 Anterior • 9061421 - 2 pack / 9061420 - 5 pack



204 Posterior • 9061423 - 2 pack / 9061422 - 5 pack



Facial (Goldman-Fox) • 9061402 - 2 pack / 9061403 - 5 pack



Universal (4L/4R) • 9061401 - 2 pack / 9061400 - 5 pack

Premier® Implant Scalers

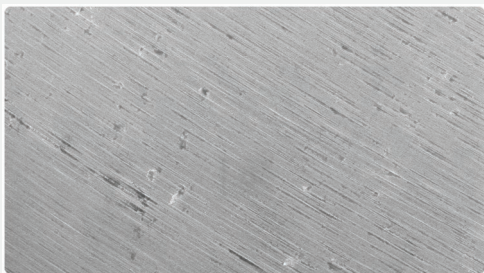
Engineered for reliable implant maintenance

Premier® Implant Scalers are made from fiber reinforced graphite that will not scratch implant surfaces. The tips are thin and sharp with well-defined edges. The graphite is strong yet slightly flexible, allowing the tips to access tight areas effectively and safely. The redesigned handle has textured grips and a larger diameter for greater comfort and control. Premier Implant Scalers can be reused and are autoclavable (273°F / 134°C). Made in the USA



Premier® Implant Scalers

**Implant surface after being scaled
with Premier® Implant Scaler**

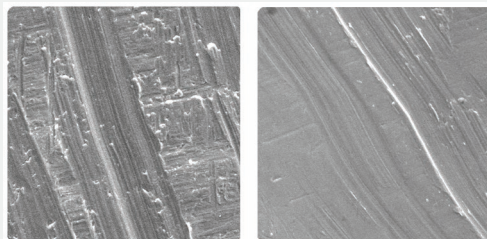


**The smooth abutment surface resists
attachment of plaque and bacteria
Premier Implant Scaler (100um)**

- **Fiber reinforced graphite** – Will not scratch implant structures
- **Precisely engineered tips** – Thin and sharp with well defined edges, effective in removing plaque and calculus
- **Variety of styles** – For every use and preference
- **Redesigned handle, larger diameter and textured grips** - Greater comfort and control
- **Reusable** - Autoclavable (273°F / 134°C)

Premier Implant Scalers should not be resharpened.

**Implant surface after being scaled
with stainless steel and titanium scaler**



Rough abutment surface can harbor plaque and bacteria

Stainless Steel Scaler (100um)

Titanium Scaler (100um)

Most titanium scalers tips are made from grade five titanium. Implant structures are made from titanium grades one through five, depending on the brand. The lower the titanium grade the softer the metal. Scaling with harder grade five titanium tips creates a substantial risk that some implant structures will be scratched.

Premier® Implant Cement™

A crowning achievement!

Premier Implant Cement, a non-eugenol, resin-based cement, offers both secure cementation and, when needed, retrievability.

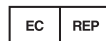
- **Retention** – Secure cementation
- **Retrievability** – Off when you need it
- **Low solubility** – Good marginal seal
- **Easy to use** – No adhesives or primers
- **No fluoride** – Safe for all alloys including titanium

3001450 Implant Cement - Standard Pack
1-5ml Automix Syringe, 10 Mixing Tips and 1 Mixing Pad

3001455 Implant Cement - Value Pack
3-5ml Automix Syringes, 25 Mixing Tips

3001451 Automix Dual-barrel Syringe Tips (25)

Order Through Your Authorized Dealer.



MDSS GmbH
Schiffgraben 41
30175 Hannover, Germany



premier® Inspired solutions
for daily dentistry®



Premier® Dental Products Company • 1710 Romano Drive, Plymouth Meeting, PA 19462, USA
Phone 888-670-6100 • 610-239-6000 • Fax 610-239-6171 • premierdentalco.com • info@premierdentalco.com