

Ordering information

9069237 Starter Kit

Contains:

32 Small/Medium - SM Teeth 5-12, Palmer 4 - 4 (4 ea.)

16 Medium/Large - ML Teeth 5-12, Palmer 4 - 4 (2 ea.)

9069244 Mini Kit

Contains:

8 Small/Medium - SM Teeth 7-10, Palmer 2 - 2 (2 ea.)

4 Medium/Large - ML Teeth 7-10, Palmer 2 - 2 (1 ea.)

Refills:

Small/Medium - SM

Contains: 6 matrices

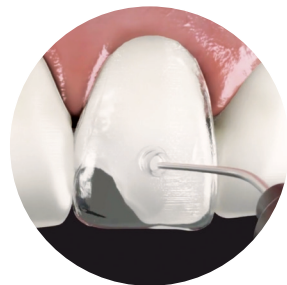
9069268	Tooth 5	Palmer <u>4</u>	FDI 14
9069275	Tooth 6	Palmer <u>3</u>	FDI 13
9069282	Tooth 7	Palmer <u>2</u>	FDI 12
9069299	Tooth 8	Palmer <u>1</u>	FDI 11
9069305	Tooth 9	Palmer <u>1</u>	FDI 21
9069312	Tooth 10	Palmer <u>2</u>	FDI 22
9069329	Tooth 11	Palmer <u>3</u>	FDI 23
9069336	Tooth 12	Palmer <u>4</u>	FDI 24

Refills:

Medium/Large - ML

Contains: 6 matrices

9069343	Tooth 5	Palmer <u>4</u>	FDI 14
9069350	Tooth 6	Palmer <u>3</u>	FDI 13
9069367	Tooth 7	Palmer <u>2</u>	FDI 12
9069374	Tooth 8	Palmer <u>1</u>	FDI 11
9069381	Tooth 9	Palmer <u>1</u>	FDI 21
9069398	Tooth 10	Palmer <u>2</u>	FDI 22
9069404	Tooth 11	Palmer <u>3</u>	FDI 23
9069411	Tooth 12	Palmer <u>4</u>	FDI 24



premier VeneerNow™ Injectable Matrix System

For additional information,
visit premierdentalco.com/VeneerNow



To obtain an IFU in English, French and Spanish,
visit premierdentalco.com or call Premier at 610-239-6000.

US Patent No. US 10,952,815 and US 11,903,787. Other Patents Pending.

premier Inspired solutions
for daily dentistry®



Distributed by:

Premier® Dental Products Company • 1710 Romano Drive, Plymouth Meeting, PA 19462, USA
Phone 888-670-6100 • 610-239-6000 • Fax 610-239-6171 • premierdentalco.com • E-mail: info@premierdentalco.com

IFU#90692 1024029 Rev1 IV

premier VeneerNow™ Injectable Matrix System



For additional video instruction by indications,
visit premierdentalco.com/VeneerNow or scan QR code.



Product description and intended use:

VeneerNow™ injectable template system is designed to create beautiful direct composite veneers in minutes.

VeneerNow templates use innovative technologies that help achieving anatomically precise, high gloss restoration in a fraction of time otherwise done by free hand.

With VeneerNow templates, clinicians can create veneers with predictable shape and symmetry every time with the same perfect results.

WARNINGS:

- VeneerNow injectable template system is a professional kit and is for use by dentists only.
- Do not swallow the matrix.
- Do not crumble the matrix.
- The matrixes should be disposed of like any other dental waste.

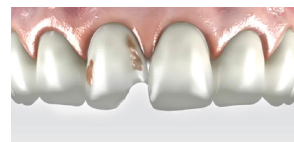
A full explanation of symbols used on Premier Dental packaging and literature is located at premierdentalco.com/symbol-glossary.

Symbols	Symbol Meaning
	Catalog number
	Batch number
	Expiration Date
	Indicates the upper limit of temperature to which the device can be safely exposed.

Symbols	Symbol Meaning
	Do not use if package is damaged
	Do Not Reuse
Rx ONLY	CAUTION: U.S. Federal law restricts this device to sale by or on the order of a physician
	See IFU on premierdentalco.com

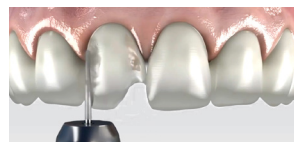
Full Procedure
Phase 1: Preparation

Step 1



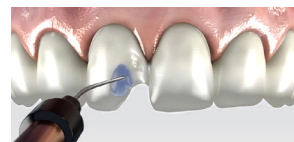
Initial Situation

Step 2



Minimal tooth preparation and decay removal (if needed)

Step 3



Apply acid etchant to the tooth for 15-60 seconds.

Step 4



Rinse with copious amounts of water

Step 5



Apply Bonding Agent.
Gently blow off excess with an air syringe leaving a thin layer of material.

Step 6



Light cure according to the manufacturer's recommendations.

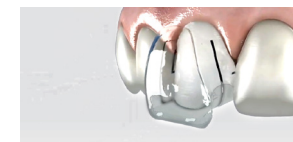
Phase 2:
VeneerNow™

Step 7



Choose the right size and shape of the VeneerNow™ matrix from the box.

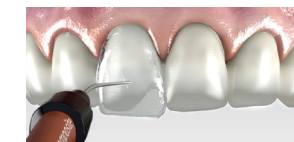
Step 8



Apply the VeneerNow matrix on to the teeth to be treated.

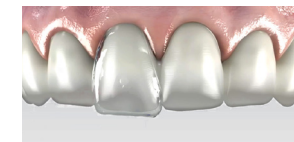
Pro tip: Create a lingual shell to secure the matrix and prevent overflow.

Step 9



Apply and connect the tip of the Injectable composite syringe into the VeneerNow matrix nozzle and inject until the whole template is filled with composite. Make sure it's free of air bubbles.

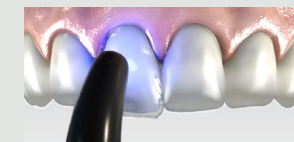
Step 10



Release the tip of the syringe from the nozzle.

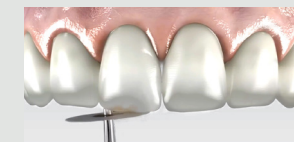
Phase 3: Finish

Step 11



Light cure according to the manufacturer's recommendation, then remove the matrix.

Step 12



Finish and polish.