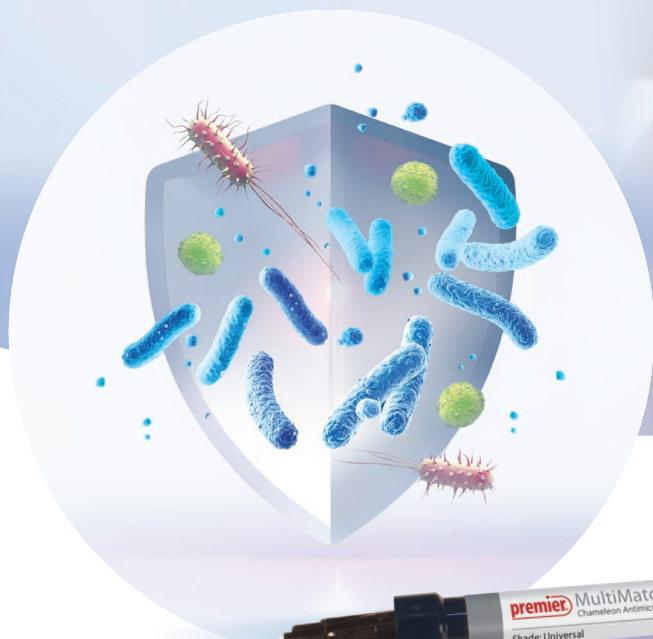


Protects. Adapts. Lasts



*new!*

## MultiMatch™ Flow

Chameleon Antimicrobial Composite

**BioArmor™**  
Antimicrobial Infused Silica

## *new!* MultiMatch™ Flow Chameleon Antimicrobial Composite

Protects. Adapts. Lasts.

Experience the next evolution in flowable composite performance. MultiMatch™ Flow Chameleon Composite with BioArmor™ Antimicrobial Protection is formulated to help reduce bacterial load<sup>1,5</sup> and demineralization<sup>2</sup>, supporting healthier restorations that stand the test of time.

The nano-hybrid formula offers optimal handling, is self-leveling, and provides excellent adaptation – even in micro-preps and tight margins. With strong physical properties and low shrinkage<sup>3</sup>, it delivers reliable performance across everyday restorative procedures.



### BioArmor™ Antimicrobial Protection

Lowers bacterial loads<sup>1,5</sup> with proven activity across a broad pH range (2.5–10.4).<sup>6</sup>



### Low Shrinkage + Strong Physical Properties

Helps maintain marginal integrity and long-term durability<sup>3</sup>



### Built-In Defense Against Acid Challenges

Reduces demineralization<sup>2</sup>



### EZ-Blend™ Shade Simplicity

One universal shade that blends to match the 16 VITA® classical A1-D4® shades<sup>4</sup>



### Optimized Handling

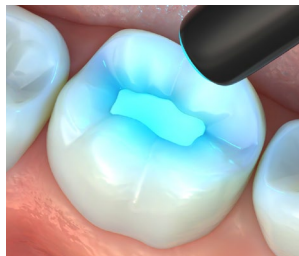
Easy-flowing, self-leveling for smooth placement and excellent adaptation

## The Nano-hybrid Formula Offers:



### Optimized Handling

Smooth placement and excellent adaptation



### Low Shrinkage + Strong Physical Properties

Marginal integrity and long-term durability



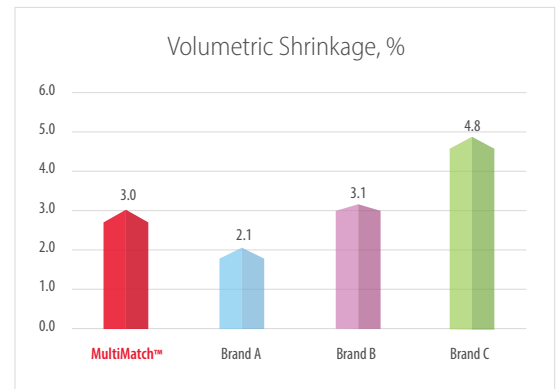
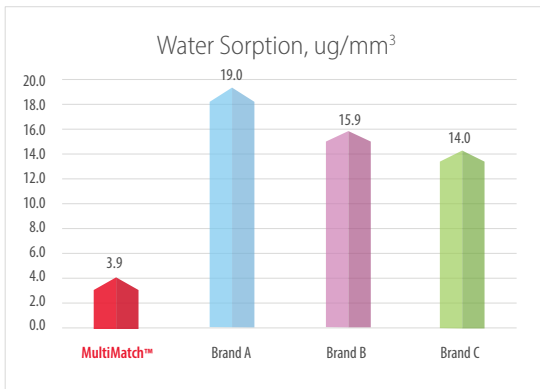
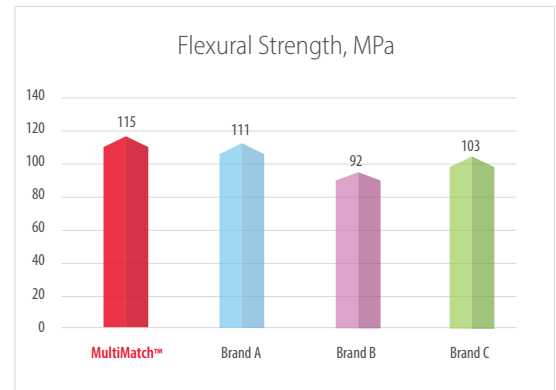
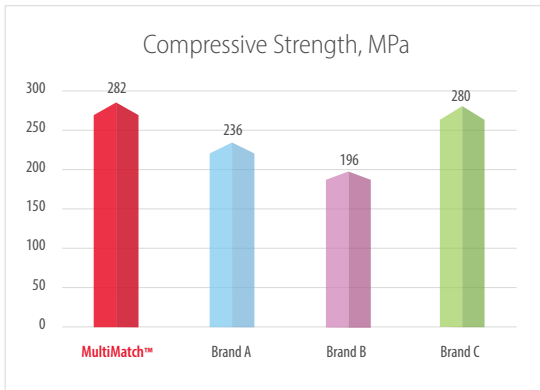
### Proprietary EZ-Blend™ Shade Simplicity

One composite for 16 VITA® shades



### BioArmor™ Antimicrobial Protection

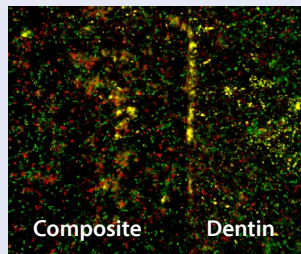
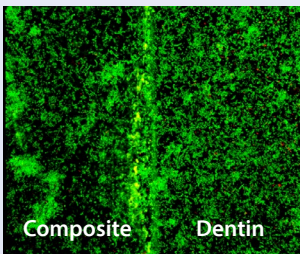
Against microorganisms that make up biofilm



## Antimicrobial Protection\*

Control composite with no antimicrobial properties

Premier® MultiMatch™ Flow with BioArmor™

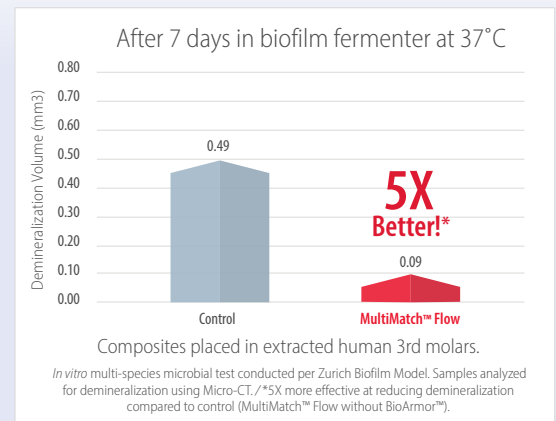


Dead bacteria (red)

Live bacteria (green)

Teeth incubated in an inoculated biofilm fermenter for 24 hrs at 37°C

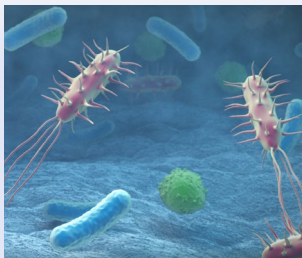
## BioArmor™ Significantly Reduces Demineralization



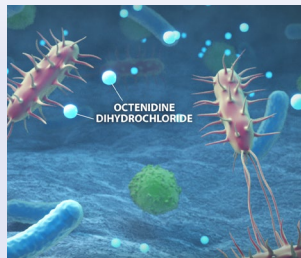


## Antimicrobial Protection

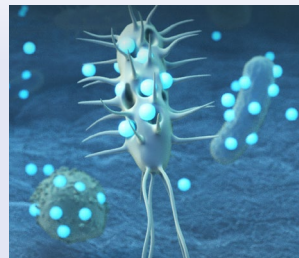
BioArmor™ antimicrobial-infused silica contains Octenidine Dihydrochloride (OCT), an antimicrobial agent that disrupts microbial cell membranes, leading to rapid cell lysis and death. BioArmor™ is effective against a range of pathogenic microorganisms, such as bacteria, fungi and viruses, that make up biofilm. Its broad-spectrum efficacy and long history of safe, effective use make it a trusted technology in dental applications. It helps reduce bacterial load and demineralization.



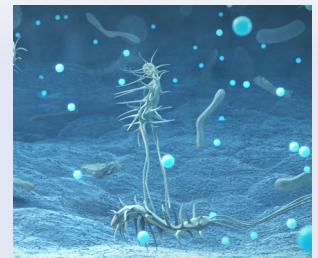
A positively charged component of BioArmor™, Octenidine dihydrochloride (OCT) leaves the composite surface and enters the biofilm.



It penetrates the negatively charged microbial cell membranes disrupting their integrity. This process continues as OCT diffuses through Biofilm.



OCT kills bacteria and critically disrupts fungus and virus, stopping them from growing and multiplying.



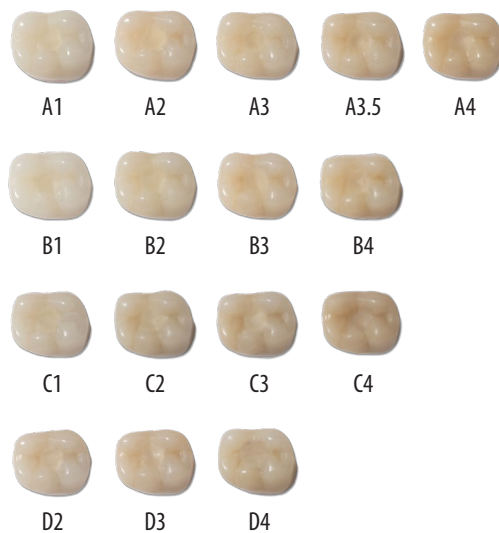
This protective process works for the life of the restoration, with proven activity across the broad pH range (2.5 -10.4).



## EZ-Blend™ TECHNOLOGY

### Proprietary Shade Technology

And with our proprietary EZ-Blend™ shade technology, a single universal chameleon shade naturally adapts across all 16 VITA classical A1-D4® shades.<sup>4</sup>



### Indications for use

- Direct restorations in all cavity classes (I-V)
- Base / liner under direct restoration
- Veneering of discolored anterior teeth
- Splinting of mobile teeth
- Extended pit and fissure sealing in molars and premolars
- Repair of composite/ceramic veneers
- Retention of thermoplastic aligners

The addition of antimicrobial particles to MultiMatch™ Flow Chameleon Antimicrobial Composite reduces demineralization and the total amount of bacteria at the material surface, which is part of the caries-formation process.

## Ordering Information

### MultiMatch™ Flow

3005230 Shade: Universal

*Contains 2 x 2.3g Syringes, 20 Applicator Tips*

3005235 Applicator Tips

*Contains 100 Applicator Tips*



For more information on these and additional products, call 610-239-6000.

Order through your authorized dealer.

Please contact your dealer concerning product availability in your country.

**premier®** Inspired solutions  
for daily dentistry®



[premierdentalco.com/promise](http://premierdentalco.com/promise)

Premier® Dental Products Company • 1710 Romano Drive, Plymouth Meeting, PA 19462, USA  
Phone 888-670-6100 • 610-239-6000 • Fax 610-239-6171 • [premierdentalco.com](http://premierdentalco.com) • [info@premierdentalco.com](mailto:info@premierdentalco.com)

VITA® and VITA classical A1-D4® are not trademarks of Premier Dental Products Company. / 1-6. Data on file. / \* Data on file.

8640002 0326059 Rev2 NKP8500