

# Inspired Innovation with Premier®

**NEW!**

**new! PremierAir®**  
Titanium Implant Scalers  
See page 29



**ProFlare®**  
Articulating Disposable  
Prophy Angle  
See pages 1-2



## Premier®

Award-winning Hygiene Product Suite

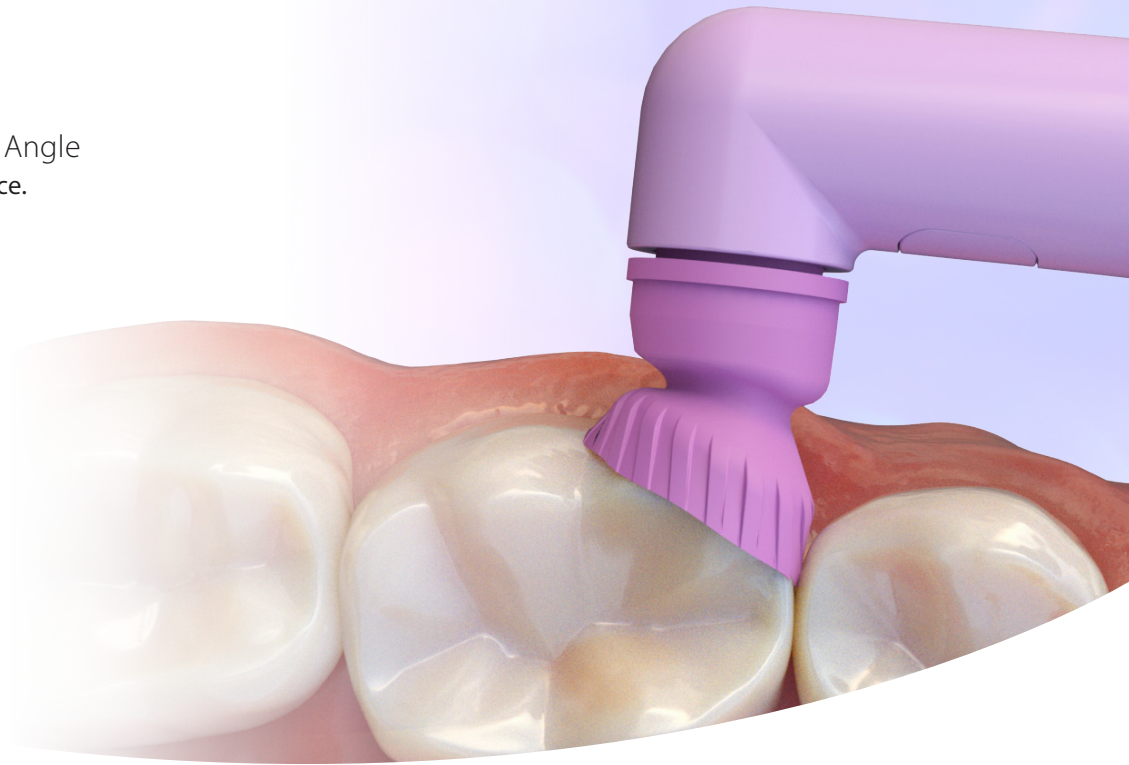
Innovation • Efficacy • Ergonomics • Safety  
*No matter what your dental hygiene needs are,  
Premier's got you covered!*

**ProFlare®** Articulating Prophy Angle See pages 1-2

**Enamel Pro®** Prophy Paste See pages 13-14

## ProFlare®

Articulating Disposable Prophy Angle  
Superior quality at an affordable price.



The ProFlare® articulating disposable prophy angle provides a better way to polish. Its patented unique latex-free articulating cup\* pivots and flares adapting to the contour of each tooth surface with less wrist motion for better ergonomics, while its outer ridges reach interproximally. The efficient gear mechanism provides smooth acceleration and optimal jam-free performance. ProFlare offers you superior quality at an affordable price.



### Articulating cup design!



Patented unique cup design\*  
• Maximum surface adaptation  
• Latex-free



Contours to each tooth  
More efficient polishing



Less wrist motion  
Better ergonomics



Affordably priced  
Superior quality



**Innovative  
Articulating Cup!**

\*U.S. Patent No. 12,226,518 and other patents pending. 1. Data on file.

## Innovative articulating cup



### Patented unique cup design\*

- Maximum surface adaptation
- Latex-free



### Contours to each tooth

- More efficient polishing



### Low profile

- Flares & flexes easily
- Cleans beneath gingival



### Outer ridges

- Interproximal stain removal
- Microgrooves & ribs for paste retention

## Efficient gear mechanism



### Smooth acceleration

- Eliminates chatter

### Jam-free

- Optimal performance



Competitors

ProFlare™

### Compact head & neck

- Improved vision & access

## ProFlare® exhibits up to 10% greater flaring capacity

Resulting in better stain removal & polish\*

Up to  
← 10% →  
greater  
flaring

### Patented Unique Cup Design†

- ✓ Starts flaring with less pressure
- ✓ Picks up & retains paste without splatter
- ✓ Allows exerted pressure on paste; not cup's edge



ProFlare®†



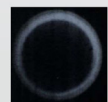
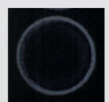
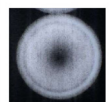
Brand A



Brand B



Brand C



†U.S. Patent No. 12,226,518 and other patents pending. / Actual images taken at 150g of pressure.  
\*R. P. Christensen and V. W. Bangerter, Determination of RPM, Time, and Load Used in Oral Prophylaxis Polishing in Vivo; J Dent Res 63(12):1376-1382, December, 1984 / 0425046 Rev1

5500150 ProFlare® Disposable Prophy Angle  
Bag of 125

5500160 *new!* ProFlare® Disposable Prophy Angle  
Bulk 1,000 pack



## AeroPro®

### Cordless Prophy Handpiece

#### Better Ergonomics & Precise Control!

AeroPro's enhanced quick-touch button provides better ergonomics and precise control to remove stains and polish your patients' teeth. Its advanced sealing technology enables safe, efficient reprocessing and enhanced durability. AeroPro generates less aerosol, less splatter vs. other leading handpieces according to a University of California Irvine study\*.

- ✓ Enhanced quick-touch button – *better ergonomics, control & protection*
- ✓ Advanced Sealing technology – *increased durability for safe reprocessing*
- ✓ Lightweight, 100% mobile design – *promotes hand & wrist health*
- ✓ Unsurpassed 3-year warranty – *handpiece & the battery*
- ✓ Less aerosol & less splatter\* – *precise finger-tip speed control*



**Accepts most disposable angles**  
Rotates 360° for improved intraoral access (ProFlare® shown)

**Enhanced quick-touch button**  
Better ergonomics, control & protection

**Advanced sealing technology**  
Increased durability for safe reprocessing

**Dimpled silicone grip**  
Improves tactile feel while preventing slippage

**Quiet and powerful German-made motor**  
Constant speed without extra pressure

**ChargeSMART™ Battery Technology**  
Charges quickly and provides lasting power for all day use

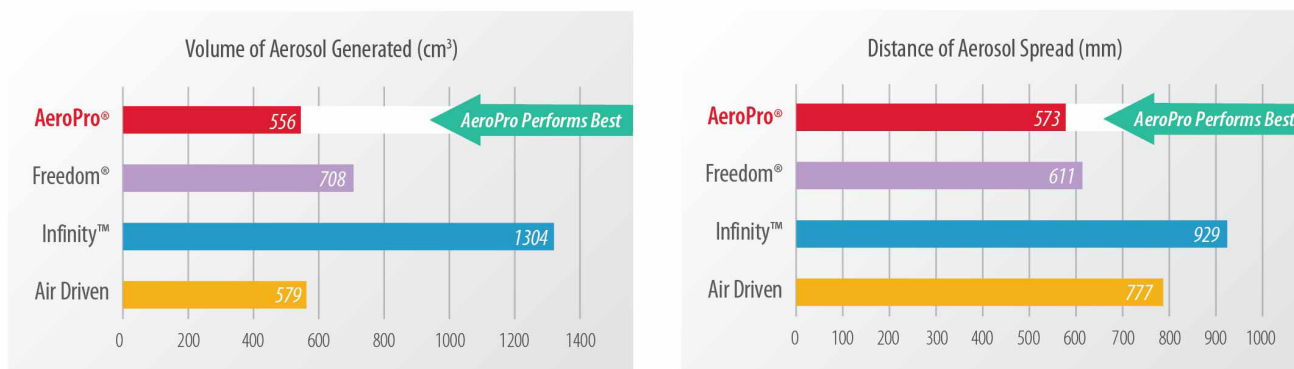


- 5500510 AeroPro® Complete Package  
(3) Autoclavable Outer Sheaths,  
1 each: Motor Component, Charging Station,  
AC Adapter, Stand, Box of 500 Disposable Barriers,  
Accessories
- 5500500 AeroPro® Basic Kit  
(1) Autoclavable Outer Sheath,  
1 each: Motor Component, Charging Station,  
AC Adapter, Stand, Box of 500 Disposable Barriers,  
Accessories
- 5500520 AeroPro® Autoclavable Outer Sheath
- 5500530 AeroPro® Disposable Barriers - Box of 500



\*Based on a University of California Irvine study, 2021.

## THE RESULTS ARE IN: AeroPro® generates less aerosol than the competition\*



\*Effect of Handpiece and Polishing Speed on Volume of Aerosol Generated and Distance of Aerosol Spread Using No Suction. Based on a University of California Irvine study, 2021. Data on file. / Freedom and Infinity are not trademarks of Premier. / 0521069



Enhanced Quick-touch Button



Lightweight, 100% Mobile Design



Advanced Sealing Technology



Less Aerosol & Less Splatter

*With times like these, you need to go pro.  
AeroPro – the right product for right now.*



AeroPro® Complete Package Shown

## BioCoat®

Bioactive Resin Pit & Fissure Sealant

Bioactive Protection is Here!

*Daily remineralization, Exceptional protection.*

Award-winning BioCoat® with SmartCap® Technology is a true breakthrough. That's because BioCoat is the only bioactive resin pit and fissure sealant that delivers daily remineralization for long-term bioactive protection. This patented technology provides the benefits to strengthen tooth enamel and protect against acid attacks. BioCoat's filled formation delivers durability that resists cracking, chipping and fractures.

### BioCoat® with SmartCap® Technology delivers:

- ✓ Relentless protection – *daily remineralization from extended release of fluoride, calcium & phosphate ions*
- ✓ Bioactive pit and fissure sealant - *strengthens enamel & helps provide defense against acid attacks*
- ✓ Opaque shade with fluorescence – *makes verifying placement & checking sealant integrity easier*
- ✓ Outstanding handling and adhesion – *easy application ensures sealed margins & excellent retention*





**Figure A**  
Dye Penetration  
Microleakage Study

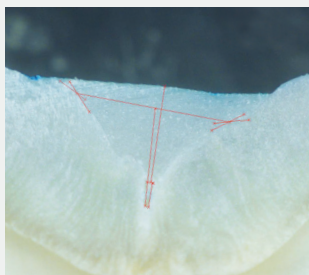
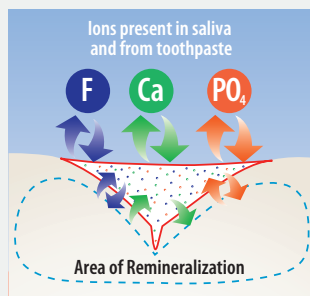


Image courtesy of Shalom Mehler, DMD

BioCoat's thixotropic properties allow for thorough penetration and adaptation into even the tiniest pits and fissures. No dye penetration indicates no microleakage.†

**Figure B**  
Schematic of clinical situation  
seen in Figure A



- Sealant
- Area of Remineralization
- SmartCap Microcapsules

See  
page 33 for  
Sleeve-It™  
Barriers

- 3001530 BioCoat Standard Pack  
Contains: One 1.2ml syringe and five disposable applicator tips  
Shade: White
- 3001535 BioCoat Applicator Tips  
Contains: 100 disposable applicator tips
- 3001531 BioCoat Value Pack  
Contains: Four 1.2ml syringes and 20 disposable applicator tips
- 3001532 BioCoat Bulk Pack  
Contains: Twenty 1.2ml syringes

BioCoat is **not** formulated with Bisphenol A (BPA).

## No special technique is required to place BioCoat.



Clean pits and fissure thoroughly with pumice and a 2pro® disposable prophyl angle. Rinse and dry.



Etch pit and fissures for 20 seconds using Spot-On™ Etch or Premier phosphoric acid etch.



Thoroughly rinse and dry – maintain a dry field.



Apply BioCoat to pit and fissures – light cure for 20 seconds.



And now, BioCoat fluoresces under black light to make verifying placement and checking sealant integrity easier.

Images courtesy of Shalom Mehler, DMD

† BioCoat Micrograph taken after Dye Penetration Microleakage Study (21 days at 37°C and then thermocycled for 2000 cycles)

## Enamelon®

Preventive Treatment Gel

### Be the Hero!

*Enamelon Delivers Everyday Relief for  
Sensitivity & Dry Mouth Tissues + Protection*

Be the hero by building your practice and pleasing your patients. Next time patients complain of sensitivity or dry mouth, come to the rescue with Enamelon's 2-way Protection Power.

First, Enamelon's active ingredient, stannous fluoride, has been clinically proven to desensitize teeth and help prevent caries and gingivitis.<sup>1</sup> Then, with its patented amorphous calcium phosphate (ACP) technology<sup>1</sup>, Enamelon actually helps strengthen tooth enamel as well. Unlike other treatment gels, Enamelon helps prevent caries by providing 3x greater protection against acid challenges compared to 5000ppm fluoride toothpastes.<sup>2</sup>

The non-abrasive gentle formula with Hydramulsion reduces symptoms of dry mouth through its long-lasting coating that soothes and lubricates tissues. Enamelon is your professionally-dispensed solution to give your patients the relief they want and the enamel protection they need. Every time.

### More protection Less fluoride<sup>2,3</sup>

#### Enamelon 2-Way Protection Power

- ✓ Stops sensitivity in its tracks
- ✓ Soothes & moisturizes tissues for dry mouth
- ✓ Provides 3x greater reduction of enamel solubility<sup>3</sup>
- ✓ Helps prevent caries and gingivitis with less fluoride (970 ppm F vs 5000 ppm F)
- ✓ Promotes remineralization and inhibits demineralization<sup>2,3</sup>



### Treats sensitivity

#### Occludes tubules with ACP & Fluoride

Dentinal hypersensitivity is under-reported by the patient.<sup>4</sup> Enamelon Treatment Gel is your professionally dispensed solution.

Enamelon® contains stannous fluoride along with calcium and phosphate ions that have proven effective for tubule occlusion. By blocking the exposed tubules with a combination of stannous (tin) ions along with fluoride, calcium and phosphate salts, a physical barrier is created that covers open dentinal tubules to prevent external stimuli from causing pain or discomfort.

### Soothes dry mouth tissue

Enamelon provides an immediate and long lasting soothing, moisturizing and lubricating effect.

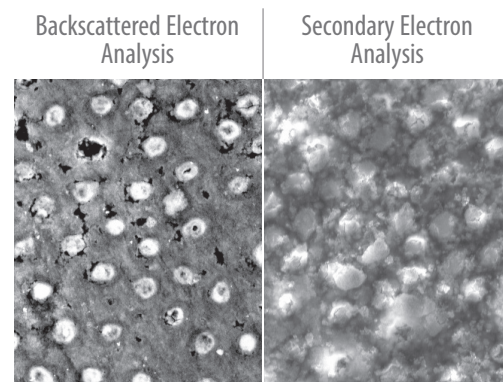
Through the use of proprietary co-polymers, Hydramulsion™ benefits your patients by providing a long-lasting coating that lubricates and soothes the soft tissues of the mouth.

Enamelon is the only stannous fluoride preventive treatment gel that has been shown in a clinical trial to help reduce many sensory symptoms of dry mouth.<sup>5</sup>



All patients can benefit from Enamelon

Enamelon®	Anti-Caries	Anti-Sensitivity	Anti-Gingivitis
Attrition (Bruxism)		✓	
Caries Risk based on CRA <sup>6</sup>	✓		
Crown & Bridge Protection	✓	✓	✓
Dental Erosion	✓	✓	
Gastric Reflux Disease GER/GERD	✓	✓	
History of ECC <sup>7</sup>	✓		
History of Pit & Fissure Caries	✓		
ICDAS Prevention Care <sup>8</sup>	✓		
Oncology	✓	✓	✓
Orthodontic	✓		✓
Pediatric	✓		✓
Periodontal	✓	✓	✓
Polypharmacy	✓	✓	
Pregnancy/Maternity	✓		✓
Recession	✓	✓	✓
Special Needs Patients	✓	✓	✓
Whitening/Bleaching		✓	
Xerostomia/Dry Mouth	✓	✓	✓



SEM of the occluded dentinal tubules after day 5 (10 applications) with Enamelon.  
10 µm Mag = 1.00 K, XEHT = 20.00 kV



## Dispense with confidence!

“ For patients that have tried a sensitive toothpaste and have not had any relief, we offer the Enamelon Treatment Gel for the generalized sensitivity. For our dry mouth patients, we offer the Enamelon to help aid in the relief to dry mouth tissues, as well as protect them from caries. ”

- Dr. P., DMD & C. B., RDH, BS, Connecticut

9007285 Enamelon® Preventive Treatment Gel  
4.0 oz (113 g), Clean Mint, 12/case

Not available in Canada.

1. Enamelon's patented formula contains 0.45% stannous fluoride and amorphous calcium phosphate (ACP) / 2. Schemehorn BR, DiMarino JC, Movahed N. Comparison of the incipient lesion enamel fluoride uptake from various prescription and OTC fluoride toothpastes and gels. J Clin Dent. 2014;25:57-60. / 3. Schemehorn BR, DiMarino JC, Movahed N. Comparison of the Enamel Solubility Reduction from Various Prescription and OTC Fluoride Toothpastes and Gels. Journal of Clinical Dentistry, 2014; 25:61-64. / 4. Kamath Deepa G & Nayak Sangeeta U. Dentinal hypersensitivity and its management – An informed view, J. Pharm Biomed Sci. 2013, February; 27 (27): 474-479. (Article no 09) / 5. Milleman J.L., Milleman K.R., Santos S.L., Proskin H.M., Battershell K.K., DiMarino J.C.A. Subjective Assessment of Enamelon® Preventive Treatment Gel in A Self-reported Dry-mouth Population. Compend Contin Educ Dent. 2016; 37 (8): E6-E10. / 6. CRA=Caries Risk Assessment curriculum. (ADA, AAPD, CAMBRA, etc) / 7. Early Childhood Caries is defined as the presence of one or more decayed (non-cavitated or cavitated lesions), missing (due to caries) or filled tooth surfaces in any primary tooth in a preschool-age child between birth and 71 months of age. The term "Severe Early Childhood Caries" refers to "atypical" or "progressive" or "acute" or "rampant" patterns of dental caries. – ADA Statement on Early Childhood Caries. www.ada.org/2057.aspx / 8. ICDAS (International Caries Detection and Assessment System) is detection and assessment system classifying states of the caries process. www.icdas.org

## The Remineralizing Technology of Amorphous Calcium Phosphate

### Amorphous Calcium Phosphate (ACP) - Building blocks of tooth mineral<sup>12,13,14,15</sup>

The most reactive and soluble calcium phosphate compound, ACP forms on the tooth enamel, within the dentinal tubules and provides a calcium and phosphate reservoir. Research shows that available ACP on the enamel can prevent damaging erosion by stimulating remineralization of tooth structure.<sup>16,17,18</sup> Introducing calcium and phosphate back into the surface of the tooth with products containing ACP technology is an ideal strategy to reverse the demineralization process.

The ACP-forming ingredients also strengthen teeth by acting as an enhanced fluoride delivery system to deliver more fluoride than products without ACP.<sup>19</sup> The patient has the benefit of fluoride uptake without greater exposure to higher fluoride concentrations or volumes. ACP combines with fluoride to desensitize dentin. Fluoride, along with ACP, occludes tubules by depositing tooth-like minerals to create a semi-permanent reduction in



hydraulic conductance. This is a proven mechanism to reduce dentinal hypersensitivity.

#### Value of Fluoride Sources

Fluoride reacts with tooth mineral, forming either fluoridated apatite (firmly-bound) or calcium fluoride (loosely-bound).

Firmly-bound fluoride, incorporated onto the surface of the crystals of apatite, can reduce the solubility of tooth mineral and hence inhibit demineralization due to acids generated by plaque bacteria.<sup>16</sup>

Loosely-bound (labile F) fluoride provides a relatively slow-release form of ionic fluoride to plaque and saliva.<sup>17</sup> There has been renewed interest in loosely-bound fluoride as a reaction product of fluoridation to act as a potential "reservoir" source of solution fluoride enhancing remineralization and retarding demineralization processes.<sup>17</sup>

9. OTC Fluoride Monograph (21CFR Parts 310,355, and 369) and Antigingivitis/Antiplaque Tentative Monograph (21 CFR Part 356). / 10,11. Data on file. / 12. Tung, M.S., Eichmiller, F.C., Paffenberger Research Center. ADAHF. NIST. Gaithersburg, MD. "Dental Applications of Amorphous Calcium Phosphates" Journal of Clinical Dentistry, Vol.10, Issue 1, 1999. / 13. Tung, M.S., Eichmiller, F.C. "ACP for Tooth Mineralization", Compendium Cont. Educ Dent, Vol 25, No. 9, Suppl. 1, Sept. 2004, p 9-13. Journal Code 9600713, Journal Subset MEDJSD, ISSN 1548-8578. Corp. Author: American Dental Association Foundation. / 14. Tung, M., Eichmiller, F., Gibson, H., Ly, A., Skrtic, D., Schumacher, G., (ADAHF Paffenberger Research Center, NIST, Gaithersburg, MD), "Dentin Desensitization by in situ Formation of Calcium Phosphate", J. Dent Res 76 (IADR Abstracts):2985, 1997 / 15. Tung, M.S., O'Farrell, T.J., Liu, D.W., Paffenberger Research Center. ADAHF. NIST. Gaithersburg, MD. "Remineralization by Amorphous Calcium Phosphate Compounds" Journal of Dental Research, Vol. 72, Abstract No. 1738, 1993. / 16. Schemehorn, B.R., Wood, G.D., McHale, W., Winston, A.E., "Comparison of Fluoride Uptake into Tooth Enamel from Two Fluoride Varnishes Containing Different Calcium Phosphate Sources", J Clin Dent, 2011;22:51-54. / 17. White, D.J and Nancollas, G.H. "Physical and Chemical Considerations of the role of firmly and loosely bound fluoride in caries prevention", J Dent Res., 1990, 69:587-594. / 18. Tung, M.S., O'Farrell, T.J., Liu, D.W., Paffenberger Research Center. ADAHF. NIST. Gaithersburg, MD. "Remineralization by Amorphous Calcium Phosphate Compounds" Journal of Dental Research, Vol. 72, Abstract No. 1738, 1993 / 19. Source: "Final Report: Enamel Fluoride Uptake Study #08-151, Modified FDA Method #40V", Dental Products Testing, Therametric Technologies, Inc., Indiana University Emerging Technologies Center, March 2008 / 20. Effect of Calcium Phosphate Containing Fluoride Varnish of Dentin Permeability", Tung, M.S., Torres, J., (ADAHF Paffenberger Research Center, NIST, Gaithersburg, MD and U.S. Navy Dental Corps, Bethesda MD), J Dent Res (Spec Iss A): 0985, 2008 (www.dentalresearch.org). / 21. Fluoride Release from Fluoride Varnishes is Affected by Incubation Conditions C. Gonzalez-Cabezas, S.E.Flannagan, R. Krell, M. Uekihara, and C.C. Niquette, Dent Res 91(Spec Iss A):1094, 2012 (www.dentalresearch.org). / \*Colgate and Duraphat are not registered trademarks of Premier Dental Products Company. / ™3M and Vanish are not trademarks of Premier Dental Products Company. / 22. Winston, A.E., Charig, A., Patel, V., McHale, W.A. and Malerman, R. "Effect of Prophylaxis Pastes on Surface of Tooth Enamel", Journal of Dental Research, Vol. 84, Special Issue A, IADR Abstracts, 2005. / 23. A Dental Products Testing study on fluoride shows that Enamel Pro provides 31% greater fluoride uptake into the enamel than pastes without ACP. / 24,25. Data on file.

# Enamelon®

Fluoride Toothpaste

You can count on Enamelon to:

Still suffering from sensitive teeth? What about dry mouth?  
Let game-changing Enamelon® come to the rescue!

Did you know that your teeth are exposed to acidic, low pH foods and liquids that demineralize your tooth enamel every day?

Enamelon is the ONLY toothpaste specifically formulated with 2-way protection power to fight back. That's because Stannous Fluoride + a patented remineralizing technology with the components of Amorphous Calcium Phosphate (ACP) help strengthen tooth enamel and are clinically proven to desensitize teeth.<sup>1</sup>

What's more, Enamelon's proprietary formula provides double the fluoride uptake of prescription 5,000 ppm fluoride toothpastes<sup>9</sup> – to harden your tooth enamel. Unlike other brands, Enamelon actually helps seal the tooth surface to prevent sensitivity in the first place!

Enamelon's unique ingredients are also clinically proven to provide relief for dry mouth symptoms.<sup>10</sup> Its Hydramulsion™ long-lasting coating soothes, moisturizes and lubricates dry mouth tissues.<sup>11</sup>

- ✓ Stop sensitivity in its tracks
- ✓ Strengthen tooth enamel<sup>3</sup>
- ✓ Soothe and moisturize discomfort associated with dry mouth tissues
- ✓ Help prevent gingivitis & cavities
- ✓ Promote remineralization and inhibits demineralization<sup>2,3</sup>
- ✓ Provide peace of mind with no SLS, gluten or dyes

9007280 Enamelon® Toothpaste  
4.3 oz (122 g)  
Mint Breeze, 12/case

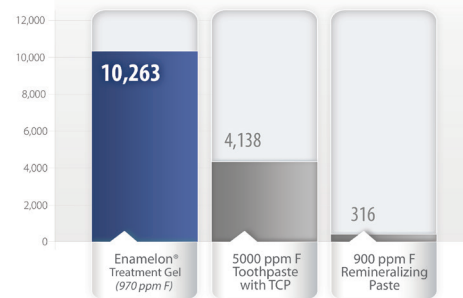
Not available in Canada.



		Enamelon® Preventive Treatment Gel	5000 ppm F Toothpaste with TCP	900 ppm F Remineralizing Paste
ppm Fluoride		970	5000	900
Claims	Anticaries	✓	✓ <sup>1</sup>	
	Sensitivity Relief	✓		✓
	Antigingivitis	✓		
Features/Benefits	Stimulates Saliva	✓		
	Moisturizes & Soothes Soft Tissue	✓		
	Abrasive-free Formula	✓		✓
	ACP Formula	✓		
Value	Price <sup>1</sup>	\$12.99/4 oz	\$12.99/4 oz	\$15.89/1.41 oz
	Cost/Ounce	\$3.25	\$3.25	\$11.26

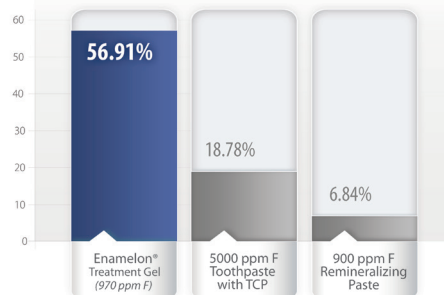
### More protection with less fluoride

Enamel Fluoride Uptake (ppm F) FDA Method #40<sup>1</sup>



### 3x greater reduction of enamel solubility

Enamel Solubility Reduction FDA Method #33<sup>1,2</sup>

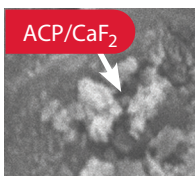


## Enamel Pro® Varnish

5% Sodium Fluoride Varnish

### The only Varnish with ACP\* technology

A powerful tool against hypersensitivity! Enamel Pro® varnish with ACP technology (amorphous calcium phosphate) administers more desensitizing efficiency and greater enamel protection to your patients. Uniquely formulated to diminish hydraulic conductance by 73%, Enamel Pro delivers 4X the fluoride uptake compared to other varnishes into the enamel surface; sub-surface; and dentin tubules to reduce thermal and post-operative hypersensitivity quickly.<sup>16,21</sup> The available calcium and phosphate ions delivered by ACP technology, protect and repair the tooth's surface<sup>20</sup> Enamel Pro's thin layer application and appealing flavors ensure increased patient acceptance.



Amorphous calcium phosphate and calcium-fluoride mineral on dentin surface and in tubules

### 5% NaF Varnish

#### Box of 35

9007541 Bubblegum 0.40ml

9007542 Bubblegum 0.25ml

#### Box of 200

9007544 Bubblegum 0.40ml



### Indications for Use

Enamel Pro® Varnish is a fluoride containing preparation for the treatment of dentinal hypersensitivity, and for the reduction of post operative sensitivity.

Each box contains single-unit doses and an applicator brush, post-application patient care instructions and doctor's directions for use.

VanillaMint is not available in Canada.



Enamel Pro Varnish is easy to apply and aesthetically pleasing.



[View Easy Application Video](#)

[www.youtube.com/PremierDentalProduct](http://www.youtube.com/PremierDentalProduct)

### Easy Application

- ✓ Peel off foil top, stir varnish with applicator brush, mix thoroughly
- ✓ Apply thin coat of varnish across tooth surfaces
- ✓ Sets on contact with saliva

### ACP ions + fluoride provide:



4X more fluoride uptake into enamel than other varnishes<sup>16,21</sup>



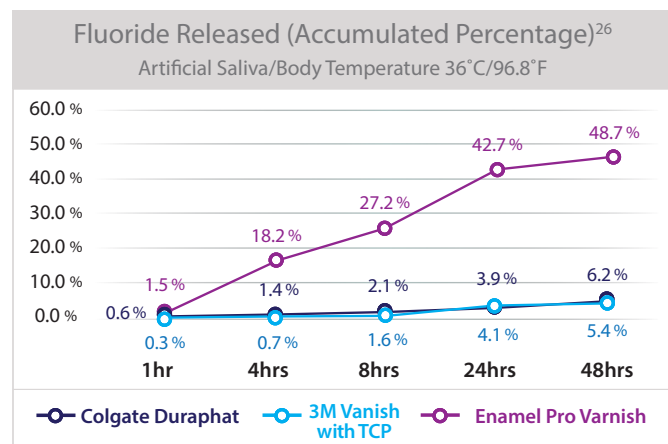
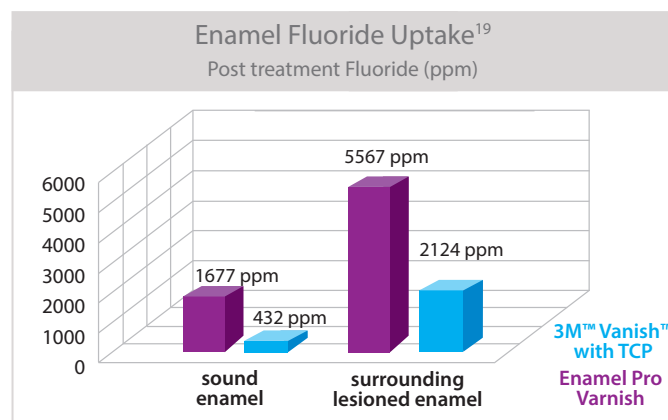
Reduces hydraulic conductance by 73%<sup>20</sup>



Protects & repairs tooth surface<sup>20</sup>



Thin layer application & appealing flavors ensure patient acceptance



In a study evaluating incubation conditions on fluoride release in vitro, Enamel Pro Varnish displayed greater fluoride release than both 3M Vanish and Colgate® Duraphat®.<sup>21</sup>

## Enamel Pro®

Prophy Paste

Get Dual Action Power with Enamel Pro

*Removes stains & repairs enamel*<sup>23</sup>

Enamel Pro with Dual Action Power is different. It's the only prophy paste that effectively removes stains and repairs enamel. With its unique formulation with ACP (amorphous calcium phosphate) technology, Enamel Pro delivers 31% more fluoride uptake to help repair the tooth surface<sup>27</sup> for brighter, whiter smiles.



**Dual Action Power = Effective Stain Removal + Enamel Repair<sup>27</sup> powered by ACP Technology**

- ✓ Effective stain removal – superior polish for brighter, whiter, more lustrous smiles<sup>24,25</sup>
- ✓ Delivers amorphous calcium phosphate (ACP) – helps repair enamel through fluoride uptake
- ✓ Minimizes splatter & easy to rinse – safely leaves teeth clean & smooth
- ✓ Fun swirls & great flavors – for happy patients



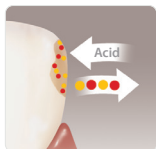
	Fine	Medium	Coarse
Mint**	9007600	9007601	9007602
VanillaMint	9007617	9007618	9007619
Bubblegum	9007614	9007615	9007616
Cinnamon	9007604	9007605	9007606
Strawberry	9007607	9007608	9007609
Mixed Berry	9007630	9007627	9007631
Grape	9007610	9007611	9007612
RaspberryMint	9007620	9007621	9007622
Mint (no fluoride)			9007613

\*\*Also available in Mint Extra Coarse 9007603

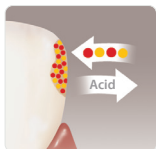


Each box of Enamel Pro® contains 200 single-use cups, packaged in a foil bag and a Comfy-Grip™ prophy cup holder.

9007650 Comfy-grip™ cup holder (3)



Demineralization

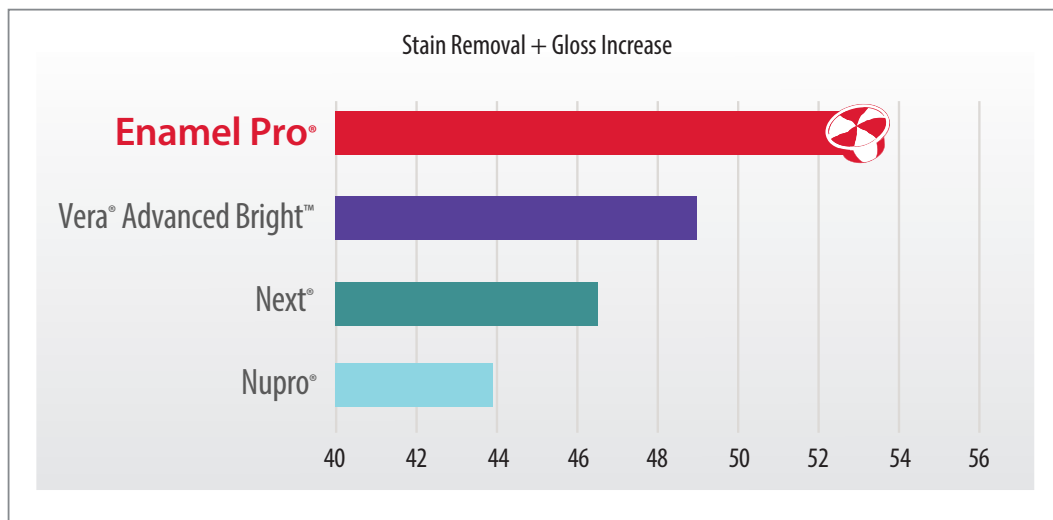


Rapid Remineralization

● Calcium  
● Phosphate



## THE RESULTS ARE IN: Enamel Pro® outshines the competition.

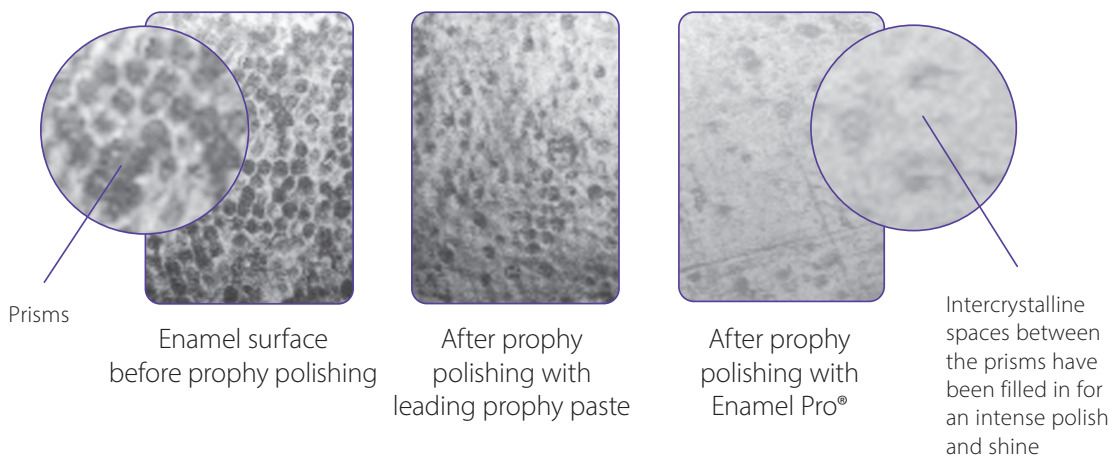


Testing conducted by Therametric Technologies, Inc., an independent, 3rd-party lab based in Noblesville, IN. Each bar represents the change in teeth color (due to stain removal as measured by  $\Delta E$ ) and change in gloss (due to change in surface luster resulting from polishing). The results are shown as absolute values (not normalized). \*Vera® is a registered trademark and Advanced Brite™ is a trademark of Young Dental Manufacturing, LLC, Next® is a registered trademark of Preventive Technologies, Inc., Nupro® is a registered trademark of Dentsply Sirona, Inc.



### Greater luster for whiter, brighter teeth<sup>15,22</sup>

Zygo® non-contact profilometry intensity map profiles



## Glitter®

### Prophy Paste

Glitter® prophylaxis paste delivers effective stain removal at a fair price. Its smooth, pliable and splatter-free paste cleans teeth quickly and effectively. Best of all, Glitter leaves your patients with the great, clean smiles they desire.

#### Professional polishing – Exceptional Value!

- ✓ Delivers effective stain removal – *for a whiter smile*
- ✓ Cleans teeth quickly and effectively – *easy to rinse off*
- ✓ Smooth, pliable and splatter-free – *great for you and your patients*

	Fine	Medium	Coarse
Mint**	9007400	9007402	9007404
Cherry		9007412	9007414
Strawberry	9007420	9007422	9007424
Bubble Gum	9007430	9007432	
Mint (no fluoride)		9007442	9007440

\*\*Also available in Mint Extra Coarse 9007406



## Tastytooth®

### 5% Sodium Fluoride Varnish

#### New & Improved!

#### Put a smile on your patient's face

New and improved Tastytooth® 5% Sodium Fluoride Varnish will put a smile on your patient's face. Create a satisfying experience with our high-impact flavors, featuring a blend of xylitol and sucralose. Our silky-smooth formula is easy to apply, affordably designed and gluten-free.



- ✓ Enhanced flowability – *smoother application to all areas*
- ✓ Better consistency – *easy to cover occlusal surfaces evenly*
- ✓ Better visualization – *reduces treatment time & nice aesthetics*
- ✓ New single-touch brush dispenser  
– *single unit release, avoids cross contamination*
- ✓ New flavors – *patient pleasing Mint, Bubblegum and Blue Raspberry*

Contents: 100 (0.5mL) single-dose, 100 brushes with dispenser and Directions for Use.

9007590	Mint
9007591	Blue Raspberry
9007592	Bubblegum

Post-treatment patient care instructions are available for download at [premierdentalco.com](http://premierdentalco.com)

Not available in Canada.



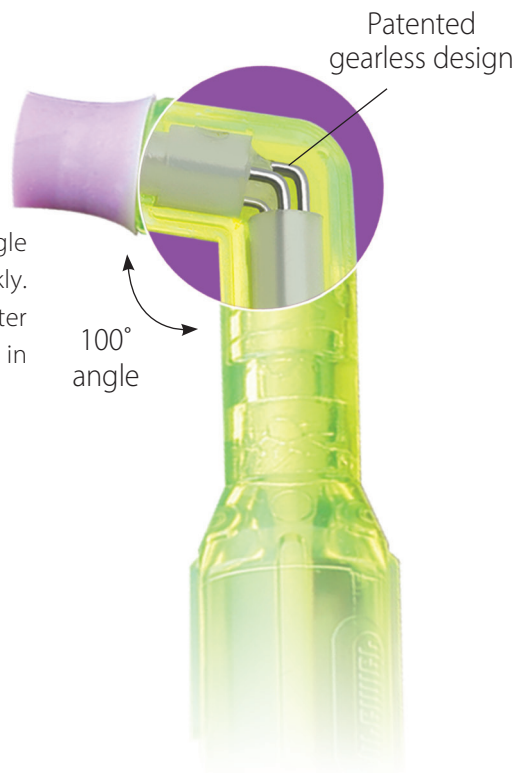
## 2pro®

### Total Access Disposable Propphy Angle

Twice the efficiency.  
Get a 2-fer with 2pro!

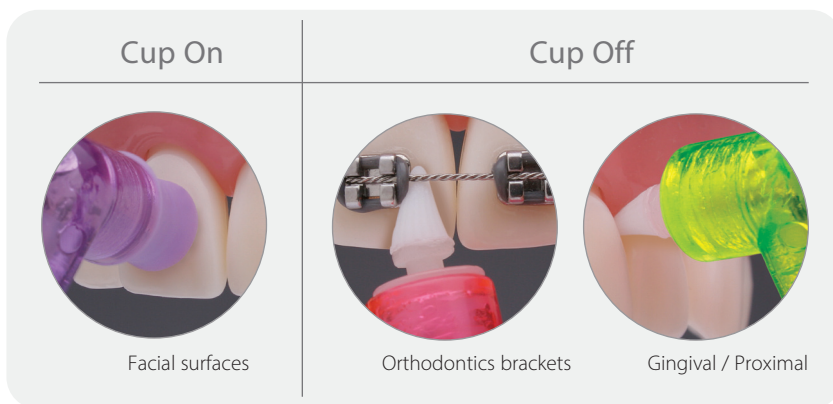
Award-winning 2pro is the uber-efficient 2-in-1 disposable prophylaxis angle that helps you easily access hard-to-reach areas of the mouth quickly. One cup. One tip. No extra cost or time to switch. Which means a better cleaning experience, happier patients and less chair time! 2pro is your all in one polishing angle.

- ✓ Patented gearless, jam-free design – quiet, smooth polishing
- ✓ Angled neck for easier total access – makes hard-to-clean areas a breeze
- ✓ Advanced 2-in-1 design – saves time, improves workflow
- ✓ Convenient access tip – efficiently cleans around ortho bracket



	Bag of 144	Bulk Package (1,000 angles)
Soft/Short Cup (purple cup)	5500101	5510001
Firm/Short Cup (blue cup)	5500102	5510002
Soft/Long Cup (white cup)	5500103	5510003
Firm/Long Cup (green cup)	5500104	5510004

Order through your authorized dealer.



## Perfecta® REV!®

14% Hydrogen Peroxide

Zero to White in 15 minutes

Perfecta REV!® is a breakthrough in take-home tooth whitening! Help your patients get an affordable, professional strength, high-percentage H2O2 gel that whitens teeth with just 15 minutes of daily wear time. REV!'s patented water-based gel hydrates as it whitens so no need to worry about sensitivity or time-consuming 'solutions' that often leave non-compliant patients with disappointing results. And Perfecta REV!'s fresh mint rinse with Vitamin C boosts the whitening effect even more—without gimmicks like light or heat.

### ✓ Powerful Whitening Gel

- 14% Hydrogen Peroxide – *55% higher concentration than the leading brand*
- 15-minute daily wear time – *Just half the time of other take-home systems*
- Patented gel hydrates teeth as it whitens - *66% less sensitivity than the leading strips*<sup>26,27</sup>

### ✓ Refreshing Finishing Rinse

- Provides boost to whitening effect – *activates residual hydrogen peroxide ions*
- Formulated with vitamin C – *promotes healthy gums after treatment*
- Clean & fresh cool mint feeling – *patients love it!*

4000142 REV! Patient Paks

Contains: 2 - 3cc syringes, 2 dispensing tips and finishing rinse, patient and doctor's instructions. Enough material for a two-week treatment.

Available individually through dealer. Not available in Canada.

26. Clinical Evaluation of Bleaching Efficacy of Two Different Systems, Sheila Koh, D.D.S., F.A.G.D. University of Texas Health Science Center at Houston - Dental Branch, December 2004. / 27. Crest® Whitestrips® Supreme



## Perfecta® Bravó®

9% Hydrogen Peroxide

Only 30 minutes, once a day!

Patented water-based formulation hydrates teeth as they whiten to avoid sensitivity.

4000094 Bravó 50 Pak

Contains: 50 - 3cc syringes with dispensing tips, 12 patient instructions and doctor's instructions.

Not available in Canada.



## Perfecta®

### Carbamide Peroxide

Perfecta® carbamide peroxide gels are formulated with a predominantly glycol base for minimal dehydration and sensitivity.

#### Perfecta 16%

Can remove a full range of stains including those resulting from tobacco, dark beverages and even tetracycline. Wear time can be adjusted for light stains and for those patients with a history of thermal sensitivity.



#### Accessories

4008305	.040" Tray Material, 5 x 5" (25)
4008300	Perfecta Block-Out Resin

Standard Tubes 2-arch supply per tube A tremendous value with 2 ounces (59cc) of whitening gel in a squeeze tube. Ideal for long-term cases (tetracycline).	4007165	16% Standard Tube	(Mint)
	4007215	21% Standard Tube	(Mint)

#### Perfecta 21%

Tetracycline stains, fluorosis. Dispense only to compliant patients with no history of thermal sensitivity.

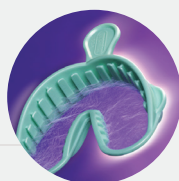
Not available in Canada.

### ALFA™ Triple Tray®

#### Full-arch Alginate Impression Making

Ideal for whitening trays - one step, two impressions!

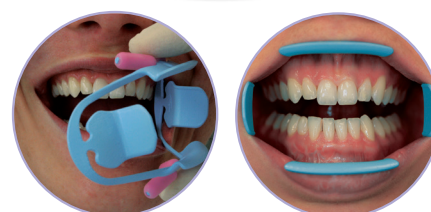
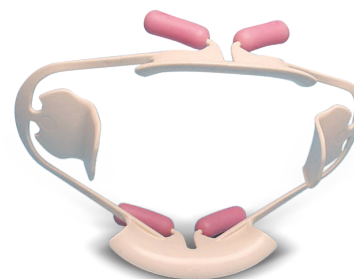
Box of 24	Small	1006313	Large	1006333
	Medium	1006323	Assorted	1006343



## ComfortView® Lip & Cheek Retractor

- ✓ Retracts lips and cheeks for optimal buccal and gingival access
- ✓ Maximum visibility and patient comfort
- ✓ Suitable for use in diagnostic, preventative, therapeutic dental applications, in-office whitening, digital impression scanning and intra-oral photography
- ✓ Autoclavable, latex free

9061381	Universal ComfortView Lip and Cheek Retractor - 2 per box (white)
9061383	Small ComfortView Lip and Cheek Retractor - 2 per box (blue)
9061382	ComfortView Refill Cushions -10 per pack



## PremierAir®

PremierAir® & Big Easy® Ultralite™ Scalars and Curettes

Now... Even Better Handles, Better Tips, Better Value!

*Feel the Difference. Experience the Quality.*

- ✓ Ergonomic, lightweight, tactile resin handles - *less hand & wrist fatigue*
- ✓ Heat-treated, cryo-hardened edges stay sharp longer - *helps remove calculus easily*
- ✓ And speaking of sharp, we've sharpened our pencils - *priced at an exceptional value!*



Stays Sharp Longer



Ergonomic/Lightweight



Exceptional Value

View the complete line of  
instruments at [premierdentalco.com](http://premierdentalco.com)

## Sickle



H6/H7 • BEUL-05621 • PremierAir-1004689



U15/30 • BEUL-05631 • PremierAir-1004692



Nebraska 128 • BEUL-05680 • PremierAir-1004680



135 • BEUL-05694



U15/33 • BEUL-05633 • PremierAir-1004693



NV1 Anterior • BEUL-05690 • PremierAir-1004681



NV2 Posterior • BEUL-05691 • PremierAir-1004682



NV4 • BEUL-05684 • PremierAir-1004684



H5/33 • BEUL-05629 • PremierAir-1004688



137 • BEUL-05692 • PremierAir-1004695



Big Easy®  
Ultralite™ (BEUL)  
1/2" diam., 16g



PremierAir®  
Scalers & Curettes  
15g



Big Easy®  
Ultralite™ (BEUL)  
1/2" diam., 16g



PremierAir®  
Scalers & Curettes  
1/2" diam., 15g

204 Series



204 S • BEUL-05623 • PremierAir-1004696



Jacquette 34-35 • BEUL-05645 • PremierAir-1004686



H-204 S • BEUL-05625 • PremierAir-1004687



H-204 SD DISTAL • BEUL-05627 • PremierAir-1004697

Columbia



Columbia 13/14 • BEUL-05617 • PremierAir-1004652



Columbia 4L/4R • BEUL-05615 • PremierAir-1004651

Younger-Good



H Younger-Good 7/8 • BEUL-05693

## McCall



McCall 13/14 • BEUL-05635



McCall 13S/14S • BEUL-05639 • PremierAir-1004671



McCall 17/18 • BEUL-05637



McCall 17S/18S • BEUL-05641 • PremierAir-1004672

## Barnhart



Barnhart 5/6 • BEUL-05643 • PremierAir-1004679



Big Easy®  
Ultralite™ (BEUL)  
1/2" diam., 16g



PremierAir®  
Scalers & Curettes  
15g

Gracey	BEUL PS	BEUL MPS
1/2	—	05670
3/4	05661	—
11/12	05665	05675
13/14	05666	05676
15/16	05667	05677

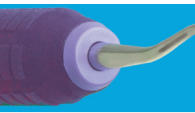
### Gracey Variations Big Easy Ultralite

Pocket Scalers (PS) and Mini Pocket Scalers (MPS) have a slender and longer terminal shank to provide access into deeper pockets. MPS has the same slender tip design as PS, but with half the blade length.



BEUL PS      BEUL MPS

Gracey



**Big Easy®  
Ultralite™ (BEUL)**  
1/2" diam., 16g



**PremierAir®**  
Scalers & Curettes  
1/2" diam., 15g



**Gracey 1/2** • BEUL-05601 • PremierAir-1004660  
Short shank for incisors and cuspids



**Gracey 3/4** • BEUL-05603 • PremierAir-1004661  
Short contra-angle shank for incisors and cuspids



**Gracey 5/6** • BEUL-05605 • PremierAir-1004662  
Medium shank for cuspids and molars



**Gracey 7/8** • BEUL-05607 • PremierAir-1004663  
Medium contra-angle shank for bicuspid and molar, buccal and lingual surfaces



**Gracey 11/12** • BEUL-05611 • PremierAir-1004665  
Triple angulation for easy access to buccal/mesial and lingual/mesial surfaces of premolars and molars



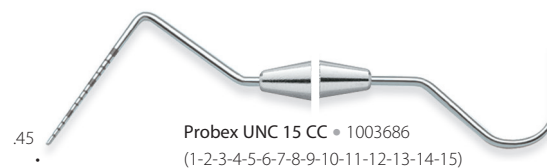
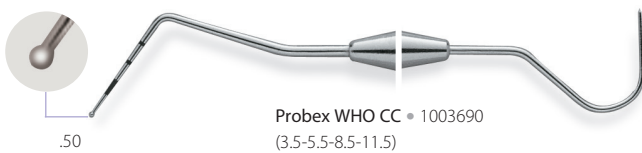
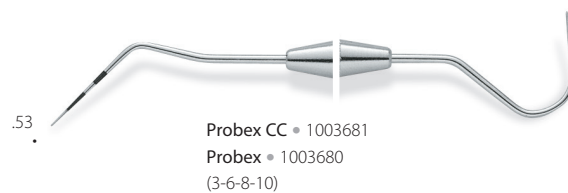
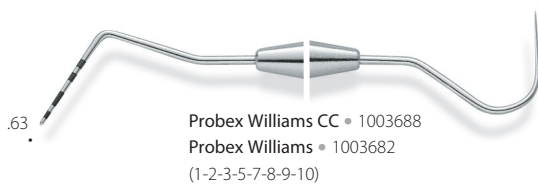
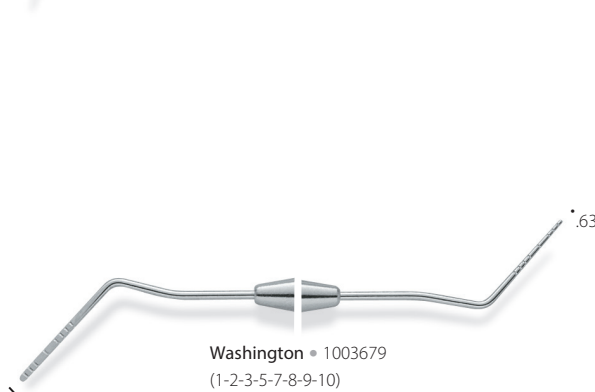
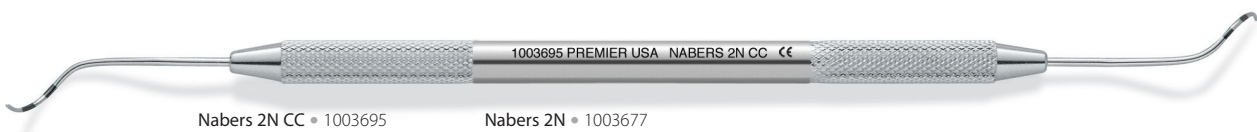
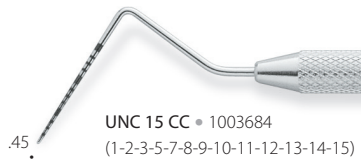
**Gracey 13/14** • BEUL-05613 • PremierAir-1004666  
Triple angulation for easy access to distal/posterior surfaces of premolars and molars



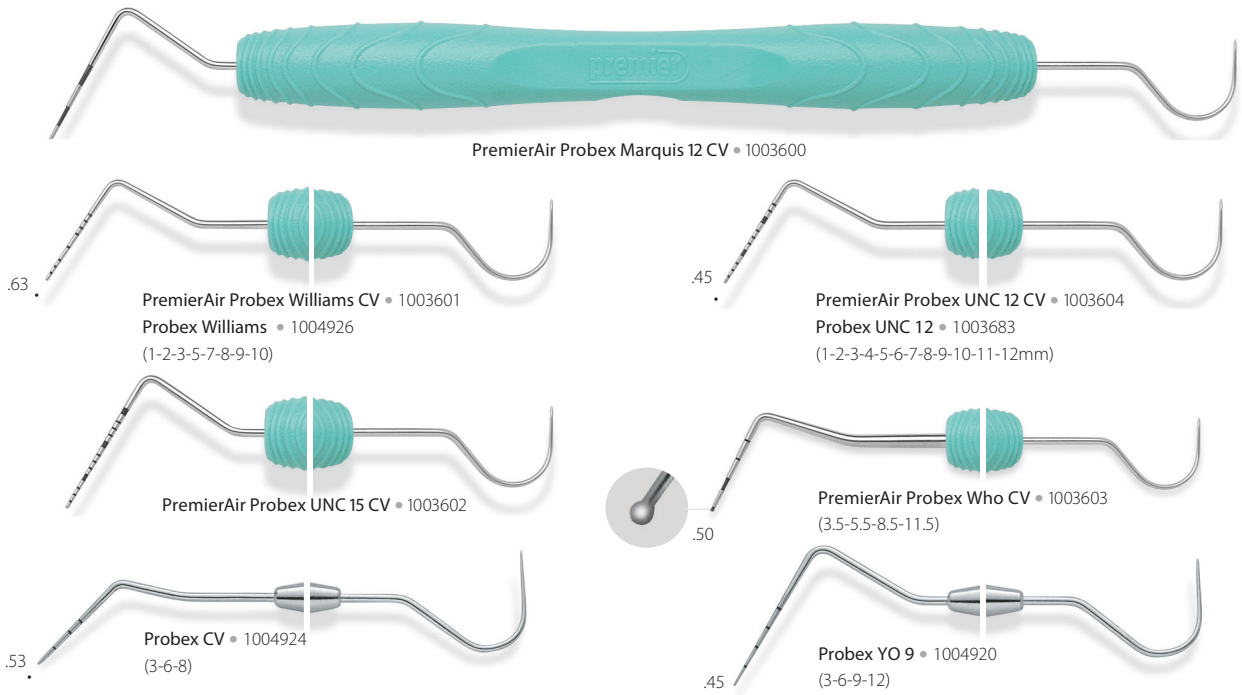
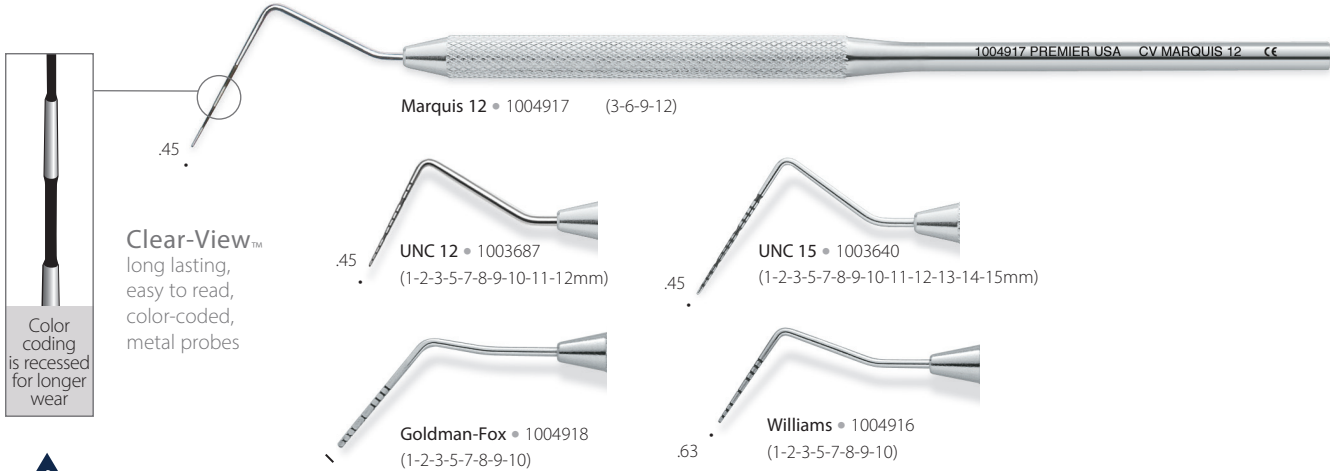
**Gracey 15/16** • BEUL-05653  
Angled shank, designed to reach mesial surfaces of posterior teeth



**Gracey 17/18** • BEUL-05655  
Highly angled shank for reaching distal surfaces of posterior teeth



Tip diameter measurements in millimeters. CC indicates color coding.





CF 6 • 1003512

OCT 6 • 1003492



CF 6L • 1003513



CF 23 • 1003515  
 CF 23 12-PK • 1003962  
 CF 23XT • 1003118  
 OCT 23 • 1003495

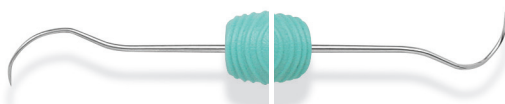
### Cavity Finder™ Explorer

- Improved tactile sensitivity via multi-piece construction
- Thin, yet sharp and durable tips

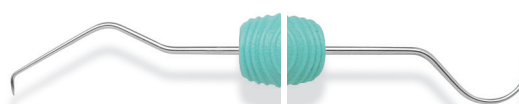


PremierAir CF 2 • 1003564 CF 2 • 1003522

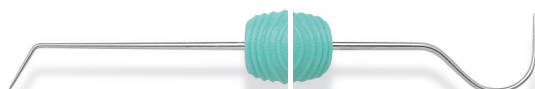
OCT 2 • 1003502



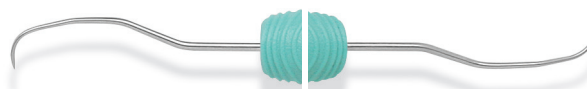
PremierAir CH3 • 1003563  
 CF 3CH • 1003527



PremierAir CF 5 • 1003560  
 CF 5 • 1003523 CF 5 12-PK • 1003964  
 CF 5XT • 1003120 OCT 5 • 1003503



PremierAir CF 6/23 • 1003565  
 CF 6/23 • 1003526 OCT 6/23 • 1003506



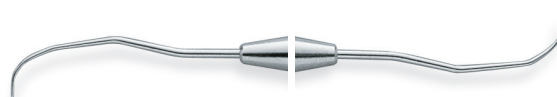
PremierAir OD 11/12 • 1003562  
 CF ODH 11/12 • 1003549



PremierAir TU 17/23 • 1003566  
 CF TU 17/23 • 1003509



CF 2CH • 1003528

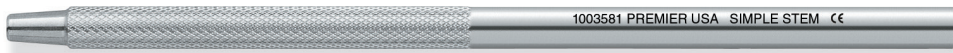


CF 11/12 • 1003529

Mirror Handles



Cone Socket • 1003582



Simple Stem • 1003581

**Big Easy® Ultrasonic Inserts**

*"Outstanding Products"*  
Big Easy® Ultrasonic Inserts

Big Easy cushion-grip ultrasonic inserts for improved ergonomic grip and comfort.

- ✓ Ergonomically designed large 7/16" diameter for maximum comfort and decreased fatigue
- ✓ Compatible with most magnetostrictive handpieces



Big Easy Ultrasonic Inserts - Universal • 25K-1005300 • 30K-1005310



Big Easy Ultrasonic Inserts - Triple Bend • 25K-1005305 • 30K-1005315



Big Easy Ultrasonic Inserts - #100 Thin-tip • 25K-1005320 • 30K-1005330



Big Easy Implant Ultrasonic Inserts • 30K-1005336

- Permanently attached PEEK tip will not scratch implants
  - PEEK is considered an advanced biomaterial used in medical implants
  - PEEK is non-abrasive and proven robust for long-lasting insert tips
- Effectively removes biofilm and calculus



Resin Handle Ultrasonic Insert IF-50 - Universal • 25K-1006800 (orange) • 30K-1006900 (yellow)



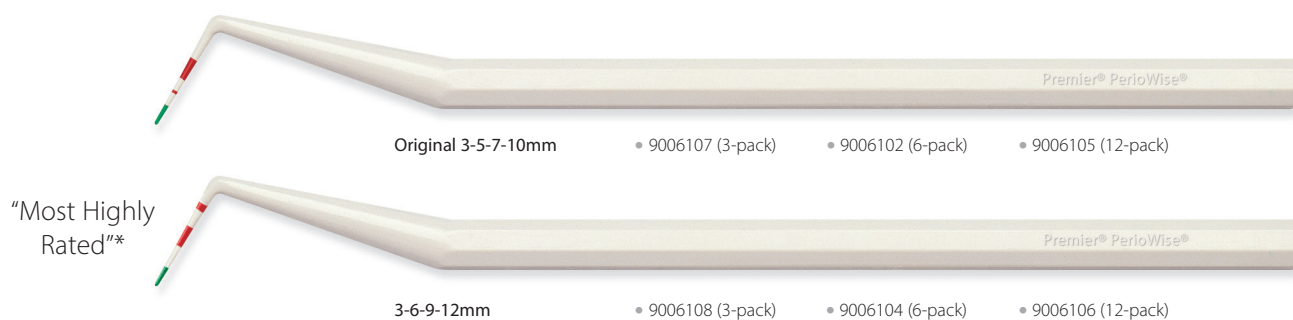
Resin Handle Ultrasonic Insert IF-1000 - Triple Bend • 25K-1006802 (red) • 30K-1006901 (purple)



Resin Handle Ultrasonic Insert - #100 Thin-tip • 25K-1006820 (red) • 30K-1006920 (red)

## Premier PerioWise® "The Friendly Probe"\*

- ✓ Slightly flexible for greater patient comfort
- ✓ Clearly visible when using intra-oral camera



\* An independent non-profit dental education and product testing foundation - January 2001. / \*\*. "A Patient-Centered Approach to Periodontal Disease Detection." JOURNAL OF PRACTICAL HYGIENE; Vol. 8, Number 3; May/June 1999.

## Premier PerioWise® UNC12 "The Friendly Probe"\*

- ✓ Provides precision measuring of pocket depths with markings indicating 1mm increments up to 12mm
- ✓ Ideal for complete periodontal examinations and intraoral measurements



## PremierAir®

Titanium Implant Scalers

4 designs crafted specifically for  
supra and subgingival maintenance



Barnhart 5/6 Ti

• 9061460



NV4 Ti

• 9061461



Langer 3/4 Ti

• 9061462



Neb 128B/Langer 5 Mini Ti

• 9061463



Scan to view full  
line of PremierAir®  
instruments!



## Implant Scalers

- ✓ Thin, slightly flexible and safe for use on implants
- ✓ Autoclavable (273°F/134°C)



Universal (Columbia 4L/4R)

2 pack • 9061401  
5 pack • 9061400



Facial (Goldman-Fox 5)

2 pack • 9061402  
5 pack • 9061403



137 Anterior

2 pack • 9061421  
5 pack • 9061420



204 Posterior

2 pack • 9061423  
5 pack • 9061422

## Vac Attak GREEN™

Safe, Effective and EPA-Compliant Evacuation System Cleaner

- ✓ Powerful enzymatic, EPA-compliant cleaner
- ✓ Compatible with amalgam separators
  - pH neutral
  - No chlorine
  - No oxidizing agents
  - Non-foaming
  - Non-corrosive
- ✓ Up to 80 cleanings per jar
- ✓ Economical and easy-to-use powder
- ✓ Fresh citrus scent



9011105 Six, 800g jars with scoop dispenser

Individual jars available through dealer.

## Vac Attak™

Evacuation System Cleaner

- ✓ Especially effective on prophy paste and fluoride gels
- ✓ Fast-acting
- ✓ Environmentally friendly
- ✓ Economical and easy to use
- ✓ Up to 100 cleanings per 800g jar



9011101 Six, 800g jars with scoop dispenser

Individual jars available through dealer.

## BioGREEN™ Micro-Applicators

Bendable. Economical. Eco-Friendly.

- ✓ Available in regular, fine and super-fine sizes
- ✓ Eco-Friendly 4 Ways!
  - Biodegradable & compostable
  - Recyclable packaging made from sustainable materials
  - Requires less energy to produce vs. petroleum plastics
  - Source plants reduce CO2 (greenhouse gasses) through photosynthesis
- ✓ Gluten-free & Lint-free brush tips



3005100 Regular (green)  
 3005101 Fine (blue)  
 3005102 Super-Fine (yellow)  
 Contents 100 micro-applicators



## Brite Shield™

Instrument Cleaner and Protectant

- ✓ Environmentally-friendly powerful enzymatic formula
- ✓ Static soak and ultrasonic cleaner
- ✓ Removes glass ionomer, carboxylate, zinc phosphate cements and bio-burden
- ✓ Unique passivation process coats instruments restricting rust and corrosion
- ✓ Removes alginate and stone from impression trays
- ✓ Economical and easy to use. One jar makes up to 34 gallons

9011100 Six, 800g jars with scoop dispenser

Individual jars available through dealer.



## Pro Clean™

Professional Strength Tartar and Stain Remover for Dentures, Partials, Retainers, Night Guards & Clear Aligners

- ✓ Extremely effective.
- ✓ Easy to mix and dispense without waste.
- ✓ Safe and environmentally friendly.
- ✓ Use chairside and dispense for patient home use.
- ✓ Dye free.

9011103 Box of 25 packets

9011102 Case of 10 boxes - (25 packets/box)



## Sleeve-It™

Disposable Barrier Sleeves  
Help Prevent Cross-Contamination

Premier's Sleeve-It™ disposable barrier sleeves provide proven protection against cross-contamination. Made from high-grade durable material, Sleeve-It barriers have passed extensive testing<sup>29</sup> to ensure patient safety.

Easy to use, Sleeve-It barriers slide over syringe and cartridge dispensers and feature a pre-cut opening to pass through the dispensing tip.

Ideal for multiple-use dispensers that cannot be reprocessed using heat-sterilized or high-level disinfectants, Sleeve-It barriers can be conveniently used for each new patient per FDA, CDC and OSHA recommendations<sup>30</sup>.

- ✓ Proven barrier protection for multiple-use dispensers
- ✓ Protection against cross-contamination.
- ✓ Passed extensive testing<sup>29</sup> to ensure patient safety.
- ✓ Easy to use

9011501 100 Series - Fits 0.7 - 3.0ml syringe  
Contains: 300 disposable barrier sleeves

9011503 200 Series - Fits 5ml dual-barrel syringe  
Contains: 300 disposable barrier sleeves

*Perfect for  
BioCoat®!  
See page 5.*



**100** SERIES 9011501 100 series  
(Fits 0.7 -3.0ml syringe)



**200** SERIES 9011503 200 series  
(Fits 5ml dual-barrel syringe)

29. Viral penetration: ASTM F 1671 Synthetic blood penetration: ASTM F 1670 Resistance to puncture: ASTM F 1342. Tear resistance: ASTM D 1004. Tensile testing: ASTM D 882. Biocompatibility: ISO 10993-5, ISO 10993-10, ISO 10993-12. / 30. <https://www.fda.gov/medicaldevices/productsandmedicalprocedures/dentalproducts>



## Topicale® Topical Anesthetic Gel Pump

- ✓ Easy dispensing; minimizes waste
- ✓ 10-second onset
- ✓ 18% Benzocaine

9007162 Raspberry - 43g / 1.5oz pump

Not available in Canada.



## Topicale® Xtra Oral Anesthetic Gel

- ✓ Three fun flavors, with no bitter after-taste
- ✓ 20% Benzocaine formulation for rapid 10-second onset of surface anesthesia of soft tissue
- ✓ Economical 1oz jar (28.35g)

9007152 Very Berry Cherry

Not available in Canada.



Prior to Injection



Oral Ulcers/Irritations

## Topicale® GelPatch™

Once placed in the mouth, Topicale GelPatch dissolves gradually - releasing benzocaine to anesthetize surface tissue for up to 20 minutes. Ideal for denture sores, prior to injection and oral ulcer/irritations - appropriate for patient home use. Fast acting

- ✓ Self-dissolving
- ✓ Flexible

9007149 GelPatch - (25) Mint

Not available in Canada.



Topicale and Topicale Xtra are Gluten-free. Not available in Canada.









[premierdentalco.com/promise](http://premierdentalco.com/promise)

## We'll go the extra mile, every time.

*We promise to:*

-  Make it easy to do business with us
-  Provide innovative, standard-setting solutions
-  Be your Product Concierge – for knowledge and service
-  Make it right if we fall short

**premier®** Inspired solutions  
for daily dentistry®