

Effortless Blend

Shade Matching  
Made Easy

*new!*  
**MultiMatch™**  
Universal Chameleon Restorative Composite

**EZ-Blend™**  
TECHNOLOGY



Ease of placement, superior handling, and excellent physical properties.  
Talk about workflow efficiency!

### Case 1



Pre-op



Post-op: completed MultiMatch™  
restoration (medium shade)



The 3-shade composite system offered by Premier and their MultiMatch system allows me to deliver restorations that look natural and disappear into the surrounding tooth structure.

- Troy Schmedding, DMD

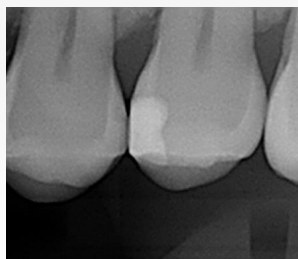
### Case 2



Decay removed from  
mesial-occlusal surface



Post-op: completed MultiMatch™  
restoration (light shade)



Post-op Radiograph

### Case 3



MultiMatch™ placed, before  
adjustment



Restored restoration after final  
polish (light shade)



Three shades available in unit dose  
capsules or 4g syringes

## new! MultiMatch™

### Universal Chameleon Restorative Composite

#### Simplified Shade Matching. Beautiful Results.

MultiMatch™ Universal Chameleon Restorative Composite takes the complexity out of shade selection – covering all 16 classical VITA® shades with just three EZ-Blend™ options – Light, Medium and Dark. Its advanced optical properties deliver a seamless, natural blend that patients notice – or don't notice – for all the right reasons. And you'll appreciate the ease of placement, superior handling, and excellent physical properties. Talk about workflow efficiency!

#### High Strength, Durability & Wear Resistance for Long-term Clinical Success

EZ-Blend™ technology offers the benefit of a 82% proprietary nano-hybrid filler that delivers excellent strength and low polymerization shrinkage that will resist wear and fractures over time.

The optimal particle size and distribution makes MultiMatch easy to place for superior handling with no stickiness. The resin-filler matrix provides excellent sculpting and easy polishing properties, ultimately delivering a beautiful smile to your patients.

#### Key Benefits



Chameleon Blending Properties  
*Outstanding shade match  
& long-lasting color stability*



Simplified Shade Selection  
*3 EZ-Blend™ shades =  
16 classic VITA® shades*



Exceptional Handling  
*Easy to place, sculpt,  
finish & polish*



Universal  
*For all cavity classes,  
anterior & posterior*

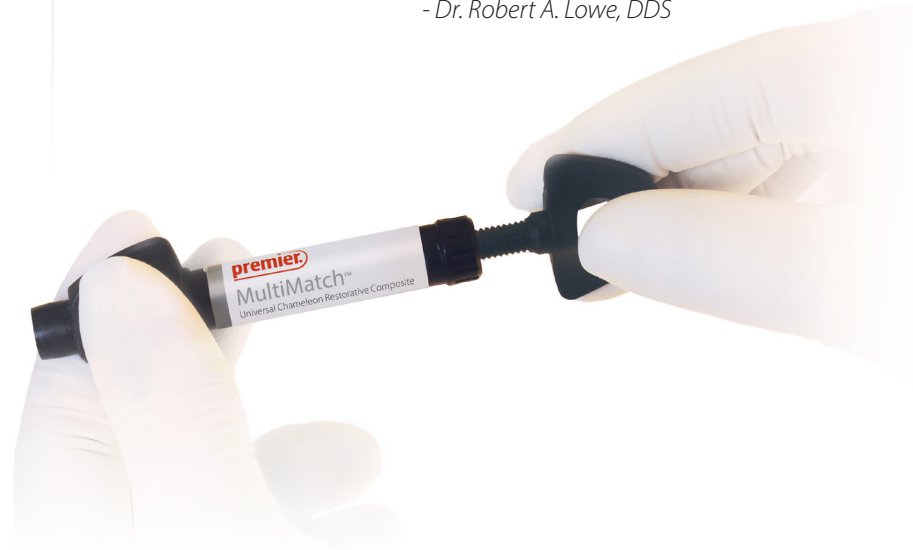


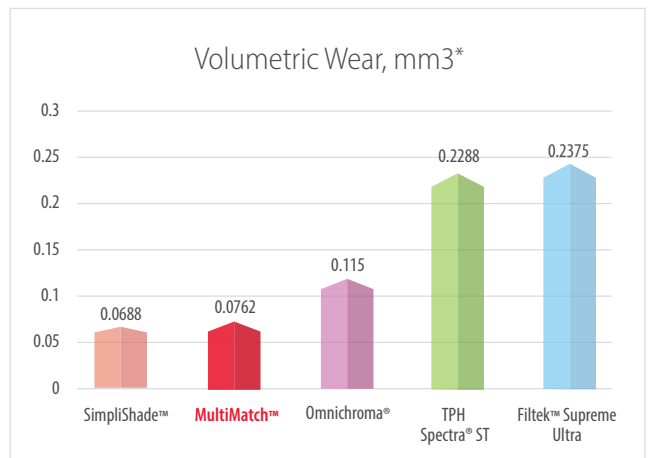
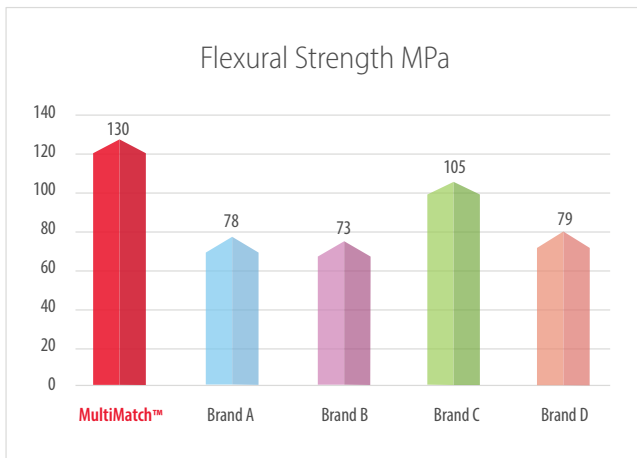
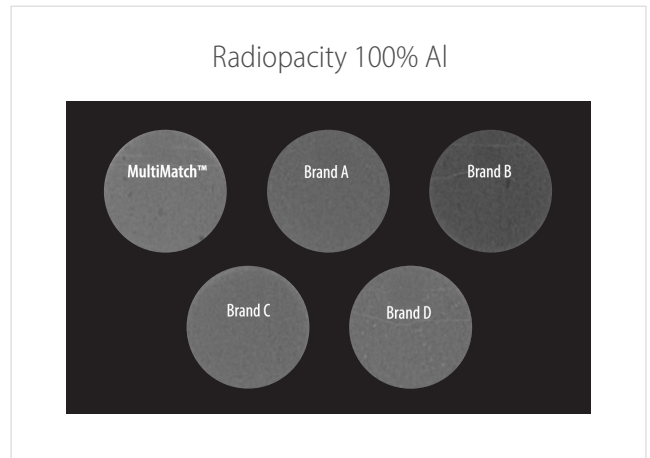
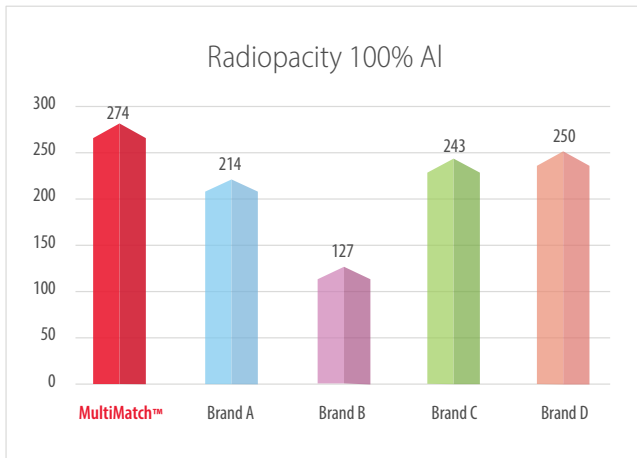
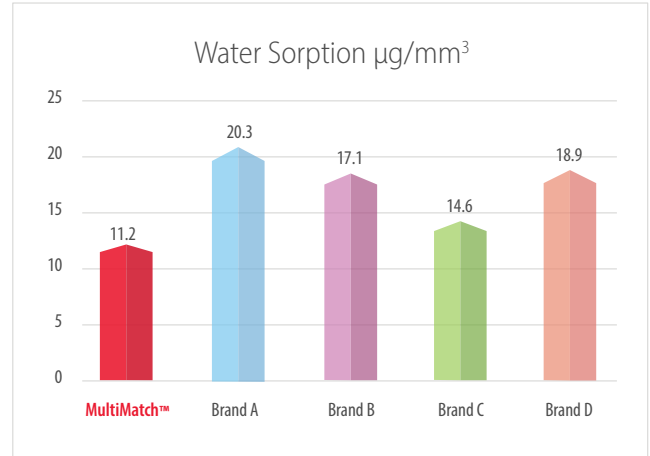
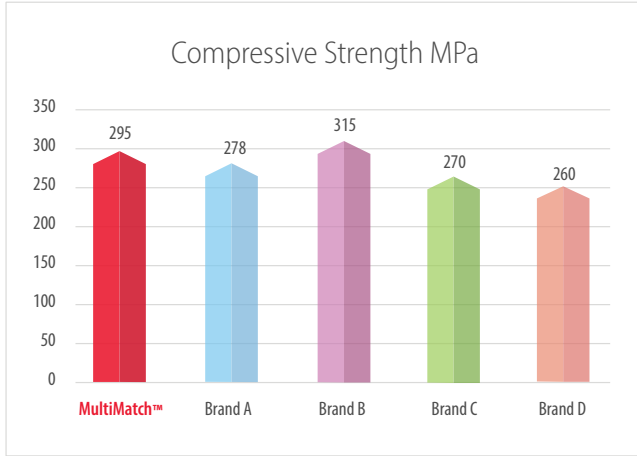
Excellent Strength & Durability  
*Resists chipping, fractures & wear*



Very satisfied with the handling of MultiMatch. Material sculpted easily and did not stick to the instrument – no pull back. No slumping after sculpting and polished nicely.

- Dr. Robert A. Lowe, DDS





Physical properties - data on file.

VITA®, Filtek™ Supreme Ultra, Omnichroma®, TPH Spectra® ST and SimpliShade™ are not trademarks of Premier Dental Products Company. / \* Based on testing by University of Alabama at Birmingham, School of Dentistry. Data on file.



**EZ-Blend™**  
TECHNOLOGY

EZ-Blend's three chameleon shades deliver a more genuine, effortless result versus a single-shade composite.

MultiMatch's exceptional chameleon effect and esthetics provide an outstanding natural look and a lovely smile with EZ-Blend™ Technology for an effortless shade match.

**3 shades equal**  
16 VITA® shades



Loved how the material handled. Easy to place and sculpt. Excellent esthetics and chameleon effect! I do believe this material is a winner!

- Lori Trost, DMD

**EZ-Blend™ Technology -  
Science That Shows in Every Smile**

MultiMatch™ uses advanced nano-hybrid fillers and a resin matrix engineered with matching refractive indices. This harmony allows light to pass through the composite and reflect the surrounding tooth structure, creating a true chameleon effect. The result? Seamless, natural-looking restorations, no guesswork, just effortless esthetics and confidence in every case.

## Ordering Information

### MultiMatch™ Syringe

*Contains one 4g syringe*

- 3005200 Light Shade
- 3005201 Medium Shade
- 3005202 Dark Shade

Composite Shade	VITA® Shade Guide Equivalent
LIGHT	A1, A2, B1, B2, C1, C2, D2
MEDIUM	A3, A3.5, B3, B4, D3, D4
DARK	A4, C3, C4

### MultiMatch™ Capsule

*Contains 20-pack unit dose capsules*

- 3005210 Light Shade
- 3005211 Medium Shade

*Contains 10-pack unit dose capsules*

- 3005212 Dark Shade



For more information on these and additional products, call 610-239-6000.

Order through your authorized dealer.

Please contact your dealer concerning product availability in your country.

**premier**® Inspired solutions  
for daily dentistry®

